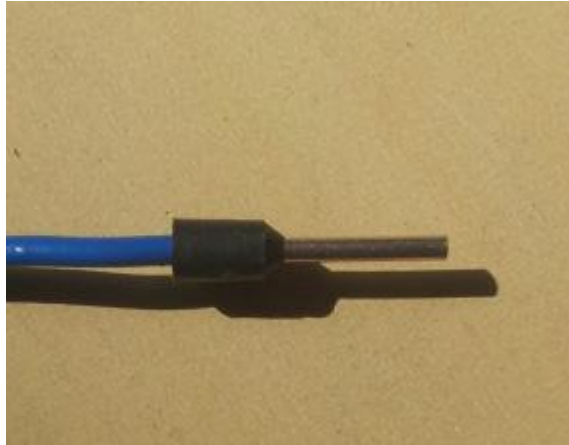
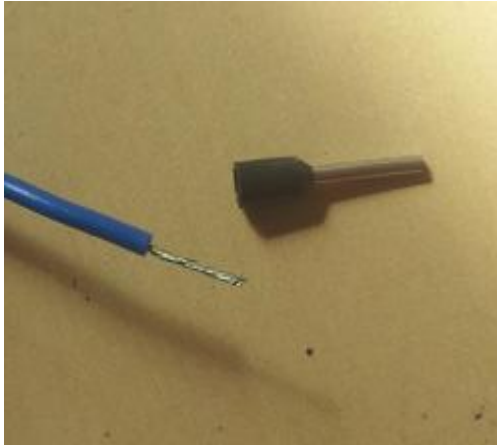


## Instructions of Control Panel

Flush the Marlin-RAMPS-2015 firmware referring to the Firmware Code updated method after junction.

Look at the handing method of thread residue: peel the thread residue about 1.5cm and then stuck into the branch pipe and pinch it with pliers to prevent short circuit, it is on your choice to install it or not. Just be careful for fear of short circuit.



1, X-axis motor position as shown below



2, Y-axis motor position as shown

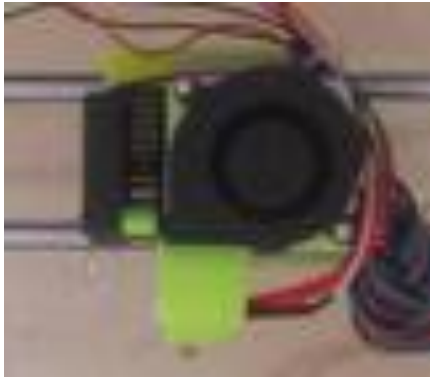


3, Z-axis motor position as shown below

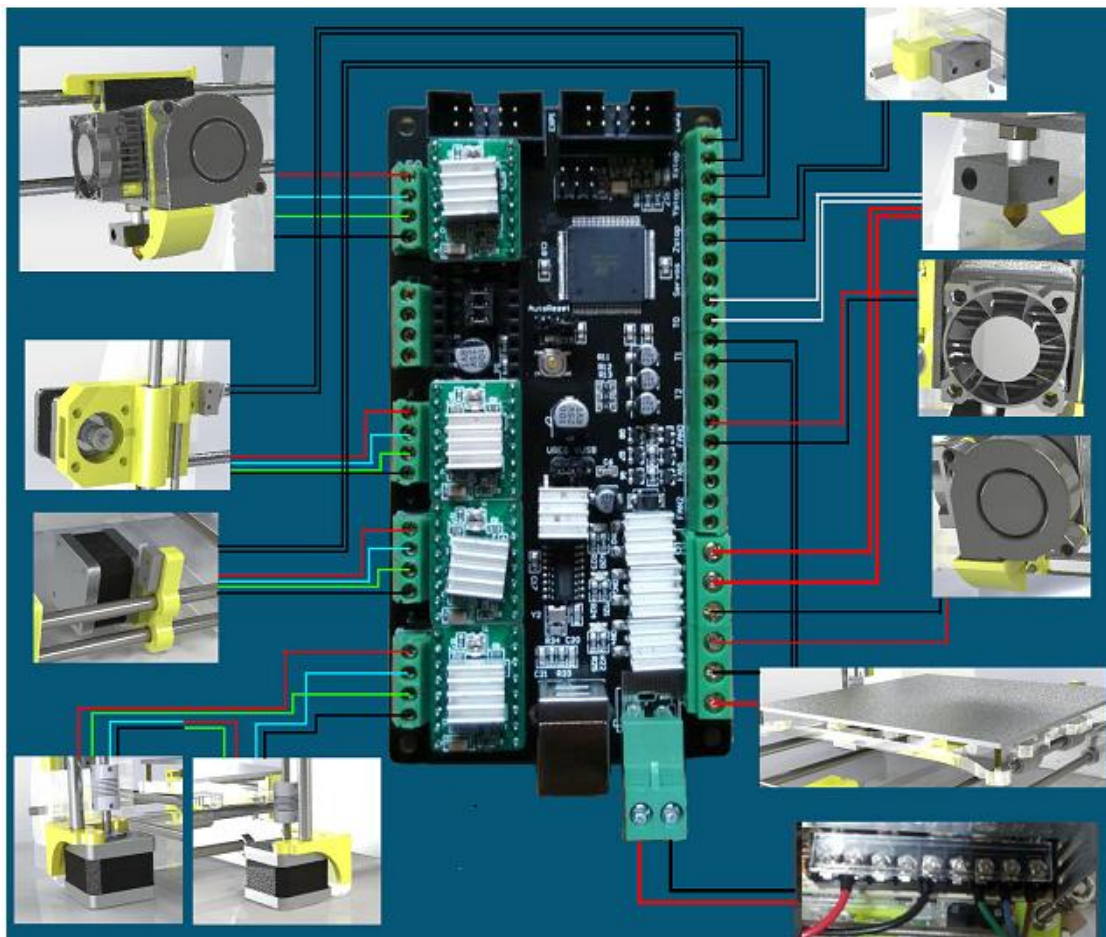
Please note that these two motors are with a pair of plugs and the rest 4 threads are equivalent to a motor after connecting the plug. Connect them to the Z-axis in order.



4, E Motor position is as the following picture:



The color sequence of the motor thread is as follow:



This is the wiring of power box: connect the red to V+, black to V-, and the power line with a plug is on the right end.



Put the threads in order after junction following the below picture.

