

How to install the LCD driver

Contents

Introduction	2
Step 1: Download the latest system and unzip the image.....	2
Step 2: Write the Image to SD Card.....	2
Step 3: Insert the SD card to RPI	4
Step 4: Power ON and open terminal	4
Step 5: Download the driver	5
Step 6: Install.....	5

Introduction

This tutorial is written for users who are more familiar with the Raspberry Pi and Linux.

PLEASE NOTE:

The following guide only supports Raspbian \Ubuntu Mate\Retropie.

- * About Elecrow:
 - * We are a leading manufacturer of electronic components for Arduino and Raspberry Pi.
 - * We have a professional engineering team dedicated to providing tutorials and support to help you get started.
 - * If you have any technical questions, please feel free to contact our support staff via email at keen@elecrow.com
 - * We truly hope you enjoy the product, for more great products please visit official website: www.elecrow.com
- Or Amazon store: www.amazon.com/shops/elecrow

Step 1: Download the latest system and unzip the image

For Raspbian: (Not LITE version)

<https://www.raspberrypi.org/downloads/raspbian/>

For Ubuntu Mate:

<https://ubuntu-mate.org/download/#xenial>

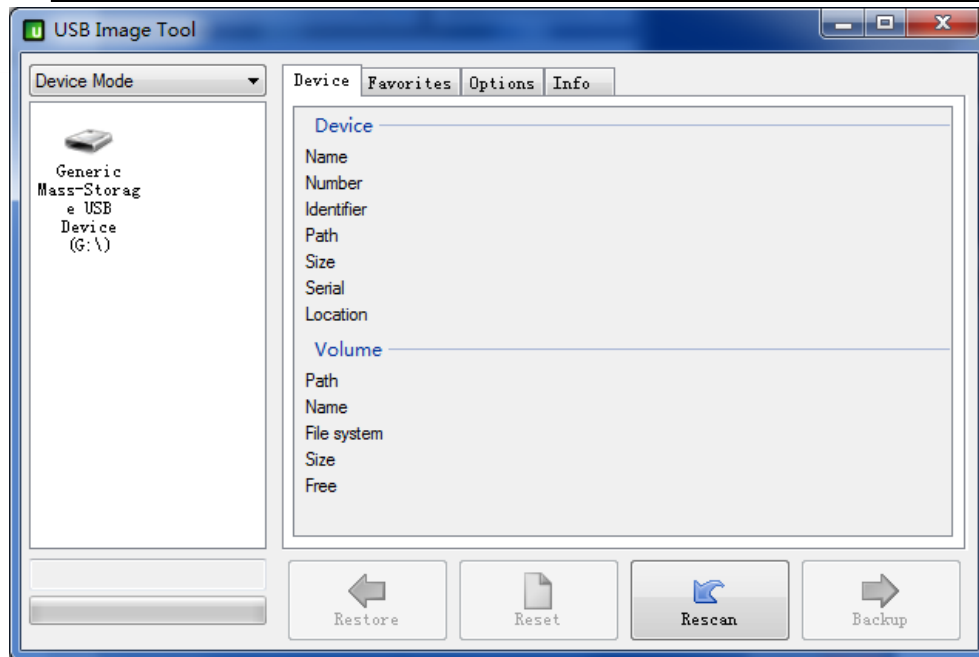
For Retropie:

<https://retropie.org.uk/download/>

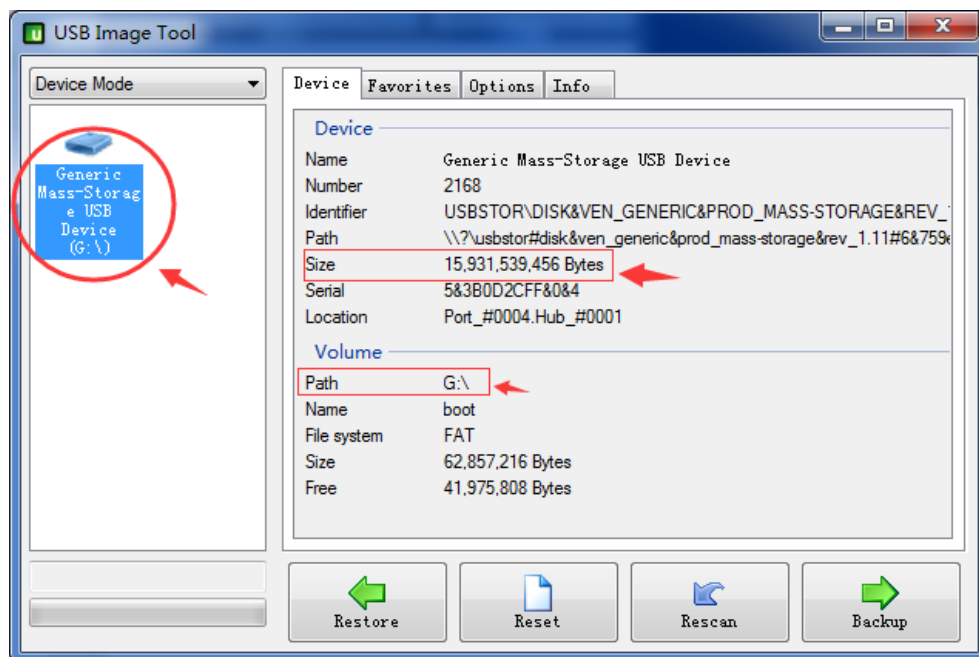
And then unzip the image file. (Next step will use it.)

Step 2: Write the Image to SD Card.

- 1、To prepare a new Micro SD memory card (TF card), and a Micro SD card adapter, we recommend that the SD card can be 8GB,16GB or 32GB.
- 2、Insert the SD card into the computer.
- 3、Using software: **Path:\Software\USB Image Tool\ USB Image Tool.exe**




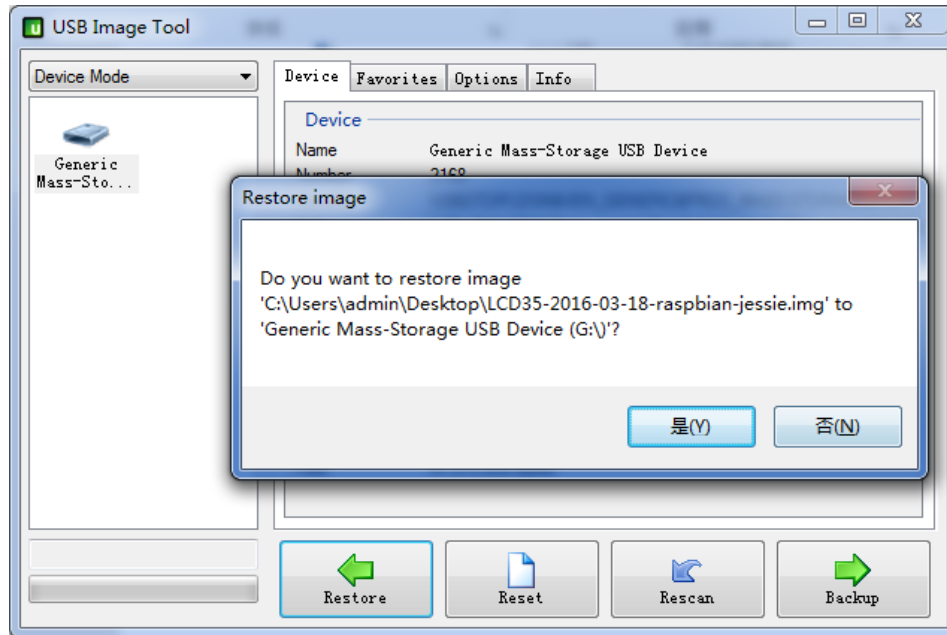
1. Check the Size and Path is correct or not



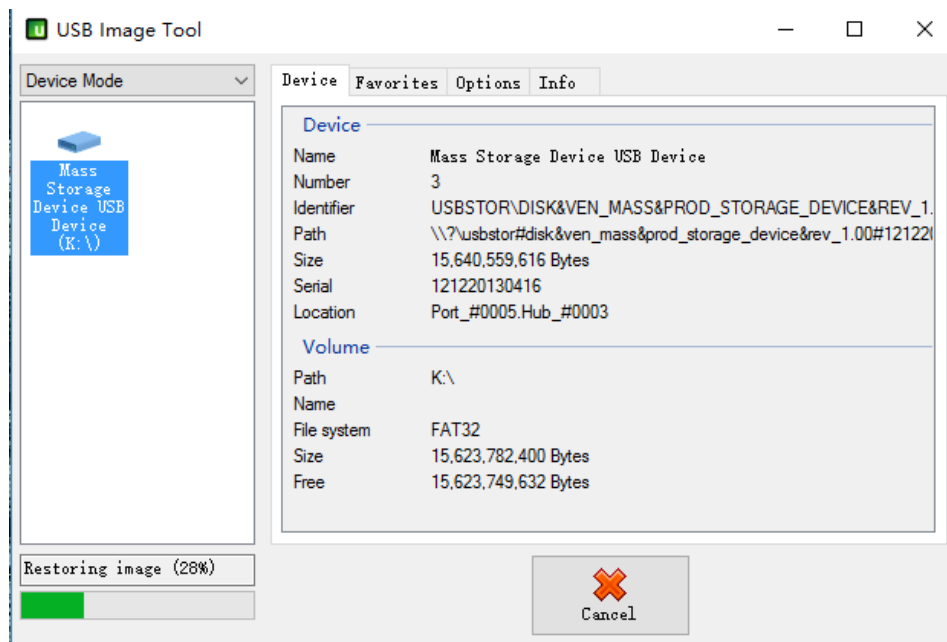
2. Click button "Restore"-> Select Image(***.img) ->Click "Y" :



 2016-09-23-raspbian-jessie.img



3. Writing image:



Tips: when it was finished, close USB Image Tool.exe.

Step 3: Insert the SD card to RPI

Step 4: Power ON and open terminal

(Tip: When you use the SSH connection, you may need to open the SSH. The latest version is close by default. Please refer to office:

<https://www.raspberrypi.org/documentation/remote-access/ssh/>)

```
Connecting to 192.168.1.8:22...
Connection established.
To escape to local shell, press 'Ctrl+Alt+]'.

The programs included with the Debian GNU/Linux system are free software;
the exact distribution terms for each program are described in the
individual files in /usr/share/doc/*/copyright.

Debian GNU/Linux comes with ABSOLUTELY NO WARRANTY, to the extent
permitted by applicable law.
Last login: Fri Sep  2 07:18:59 2016
pi@raspberrypi:~$
```

Step 5: Download the driver

Run:

```
git clone https://github.com/Elecrow-keen/Elecrow-LCD35.git
```

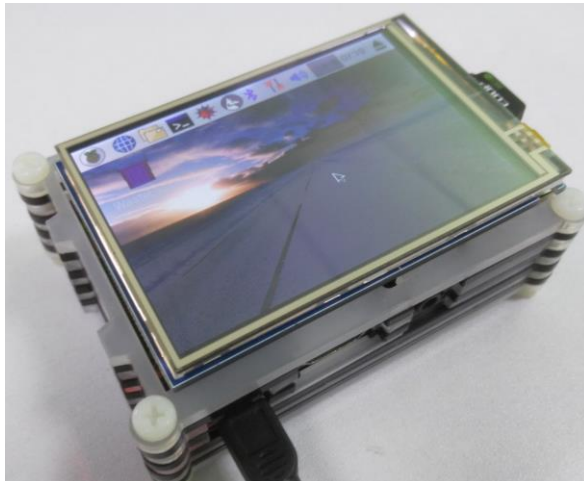
Step 6: Install

Tips: for Kali, you need to mount boot, run: `mount /dev/mmcbk0p1 /boot/`
And next:

Run:

```
cd Elecrow-LCD35
sudo ./Elecrow-LCD35
```

The screen should be working now.



Tips:

If you want to learn more about the use of 3.5" LCD, please refer to our wiki.

https://www.elecrow.com/wiki/index.php?title=3.5_Inch_480x320_TFT_Display_with_Touch_Screen_for_Raspberry_Pi