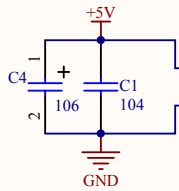
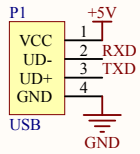
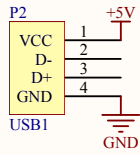


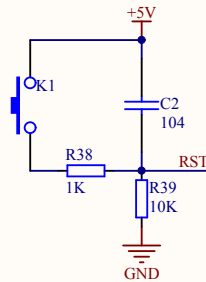
蜂鸣器



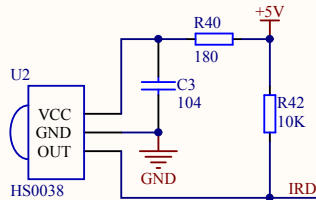
U1		
P05 1	AD5/P0.5	AD4/P0.4
P06 2	AD6/P0.6	AD3/P0.3
P07 3	AD7/P0.7	AD2/P0.2
P10 4	RxD2/P1.0	AD1/P0.1
P11 5	TxD2/P1.1	AD0/P0.0
P47 6	P4.7	P4.6
P12 7	P1.2	P4.5
P13 8	P1.3	P2.7
P14 9	P1.4	P2.6
P1510	P1.5	P2.5
P1611	XTAL2/P1.6	P2.4
P1712	XTAL1/P1.7	P2.3
RST	RES/P5.4	P2.2
BEEP	Vcc	P2.1
P5513	P5.5	P2.0
P4017	Gnd	RD/P4.4
RXD	P4.0	P4.3
P3018	RxD/P3.0	WR/P4.2
P3119	TxD/P3.1	P4.1
P3220	INT0/P3.2	P3.7
IRD	P3.3	P3.6
P3422	T0/P3.4	T1/P3.5
		23 P35

STC15F2K61S2

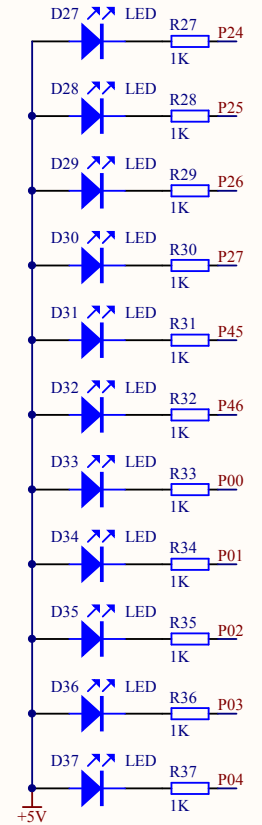
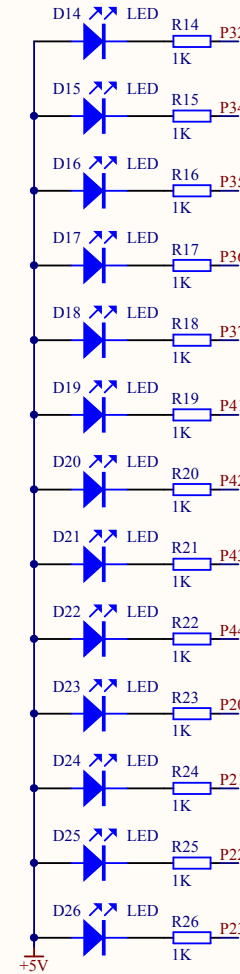
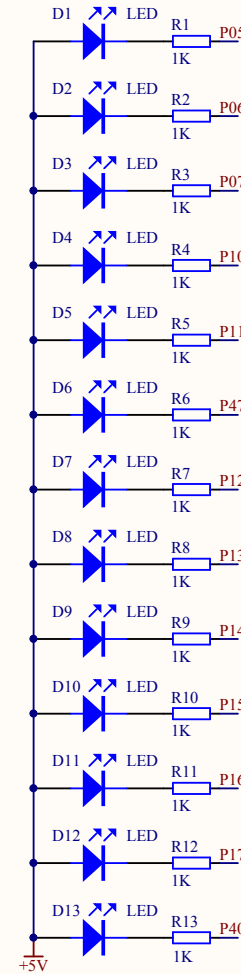
CPU



复位电路



红外接收器



Title		
Size	Number	Revision
A4		
Date:	2017-05-22	Sheet of
File:	G:\Altium Designer 10\...\ .SchDoc	Drawn By: