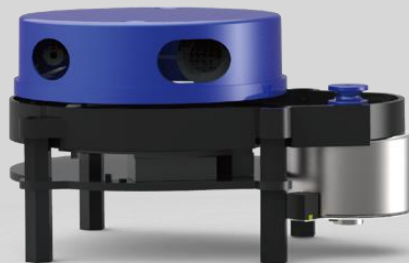


# **YDLIDAR X4**

## **USER MANUAL**



## CONTENTS

---

YDLIDAR x4 Development Kit .....	2
Development Kit.....	2
Windows Usage guide .....	3
Device connection.....	3
Driver Installation .....	4
Evaluation software .....	5
Linux ROS operation .....	7
File description .....	7
Configuration instructions.....	8
Device connection.....	9
ROS Driver Installation.....	9
RVIZ installation.....	9
RVIZ Check the scan results .....	9
Modify the scan angle problem.....	10
Use caution.....	11
Temperature .....	11
Ambient lighting.....	11
Power demand.....	11

## YDLIDAR X4 DEVELOPMENT KIT

The YDLIDAR X4 (hereafter abbreviated as X4) development kit is designed to facilitate users' performance evaluation and early development of the X4. By using the X4 development kit and matching evaluation software, point cloud data scanned by X4 to the environment can be observed on the PC or developed on the SDK.

### Development Kit

The X4 development kit has the following components:

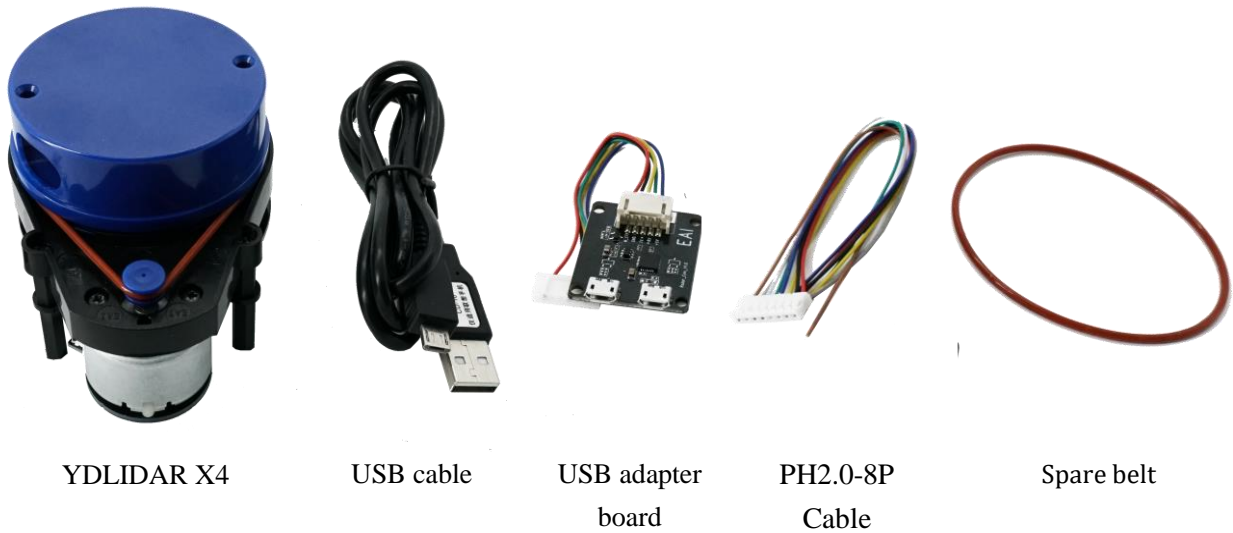


FIG 1 YDLIDAR X4 DEVELOPMENT KIT

CHART 1 YDLIDAR X4 DEVELOPMENT KIT DESCRIPTION

Item	Qty	Description
X4 Lidar	1	Standard version of the X4 Lidar. The X4 has an integrated motor drive for motor control.
USB cable	1	Use with USB adapter board to connect X4 and PC. It is both a power supply line and a data line.
USB adapter board	1	This component is used for USB to UART functions, enabling X4 and PC to be quickly interconnected. Also supports the serial port DTR signal to the X4 motor stop control. A MicroUSB Power Interface (PWR) for auxiliary power supply is also provided.
PH2.0-8P cable	1	This component meets the user's development needs in a multi-platform environment.
Spare belt	1	Used as a replacement

*Note: USB adapter board has two MicroUSB interfaces: USB\_DATA, USB\_PWR.*

*USB\_DATA: Data supply multiplex interface. In most cases, just using this interface can meet the power and communication needs.*

*USB\_PWR: Auxiliary power interface. The USB interface of some development platforms has a weak current drive capability, and auxiliary power can be used.*

## WINDOWS USAGE GUIDE

### Device connection

When evaluating and developing X4 under windows, you need to interconnect X4 and PC. The specific process is as follows:

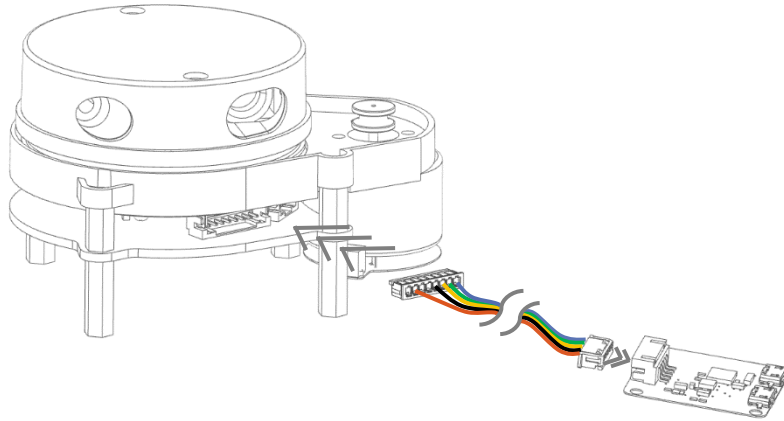


FIG 2 YDLIDAR X4 CONNECTION STEP 1

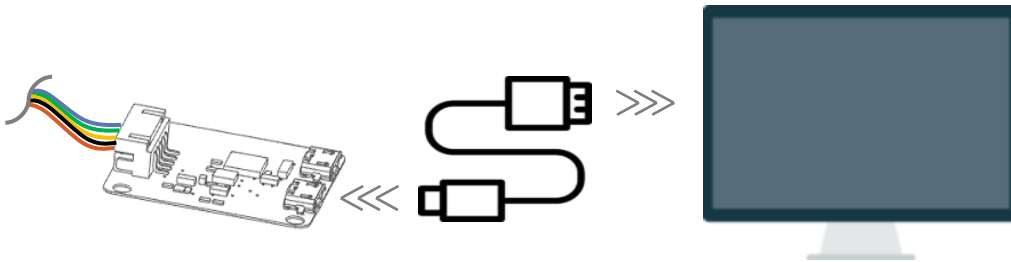


FIG 3 YDLIDAR X4 CONNECTION STEP 2

Connect the adapter board and X4 first, and then connect the USB cable to the USB port on the adapter board and the PC. Note that the USB interface's Micro interface is connected to the USB adapter's USB\_DATA. After the X4 is powered on, it is in idle mode and the motor does not turn.

The drive current of the USB interface of some development platforms or PCs is weak, and the X4 needs to access the +5V auxiliary power supply, otherwise the radar will work abnormally.

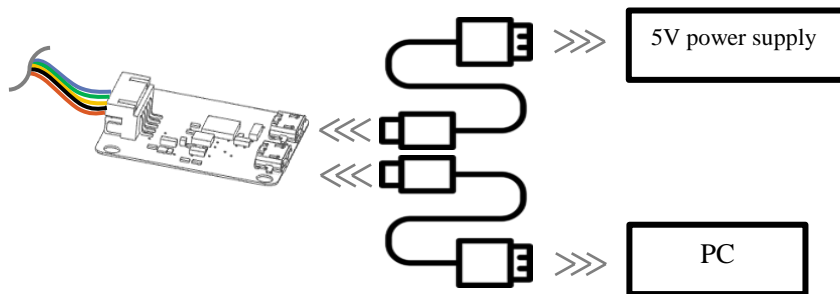


FIG 4 YDLIDAR X4 AUXILIARY POWER SUPPLY

## Driver Installation

To evaluate and develop the X4 under Windows, you need to install the serial port driver of the USB adapter board. The USB adapter board of this kit adopts CP2102 chip to realize serial port (UART) to USB signal conversion. Its driver can be downloaded from our official website or downloaded from the official website of Silicon Labs:

<http://ydlidar.com/>

<http://cn.silabs.com/products/development-tools/software/usb-to-uart-bridge-vcp-drivers>

After extracting the driver package, run the CP2102's Windows driver installation file (exe file under CP210x\_VCP\_Windows). Please select the 32-bit version (x86) or 64-bit version (x64) installation program according to the version of the windows operating system.

x64	2013/10/25 11:39	文件夹	
x86	2013/10/25 11:39	文件夹	
CP210xVCPInstaller_x64.exe	2013/10/25 11:39	应用程序	1,026 KB
CP210xVCPInstaller_x86.exe	2013/10/25 11:39	应用程序	901 KB
dpinst.xml	2013/10/25 11:39	XML 文档	12 KB
ReleaseNotes.txt	2013/10/25 11:39	文本文档	10 KB
SLAB_License_Agreement_VCP_Windo...	2013/10/25 11:39	文本文档	9 KB
slabvcp.cat	2013/10/25 11:39	安全目录	12 KB
slabvcp.inf	2013/10/25 11:39	安装信息	5 KB

FIG 5 YDLIDAR X4 DRIVER VERSION SELECTION

Double-click the exe file and follow the prompts to install it



FIG 6 YDLIDAR X4 DRIVER INSTALLATION I

After the installation is complete, you can right-click My Computer and select Properties. Under the System screen, select Device Manager from the left menu to access the device manager. Expand [Port] to see the serial port name corresponding to the identified USB adapter, that is, the driver

installation is successful. The following figure shows COM3. (Note that the port must be checked in case of X4 and PC interconnection)

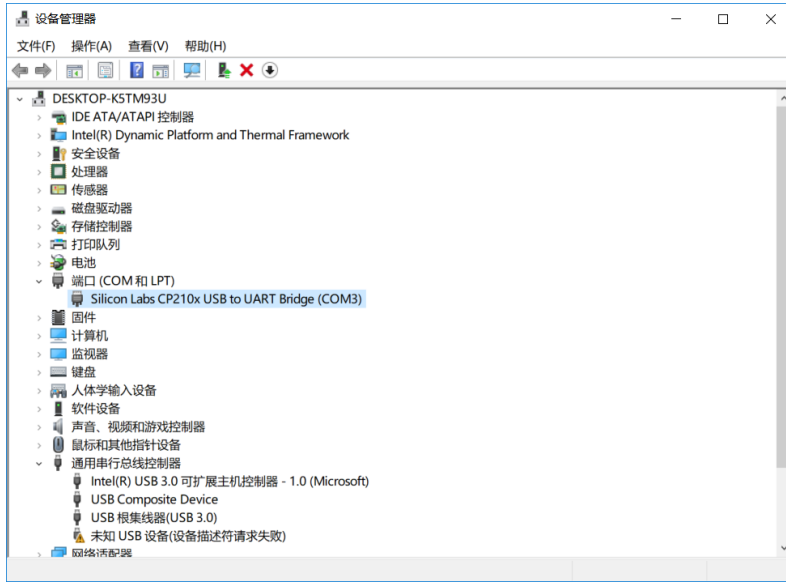


FIG 7 YDLIDAR X4 DRIVE INSTALLATION II

### Evaluation software

YDLIDAR provides Point Cloud Viewer, a point cloud data visualization software for X4 real-time scanning. The user can intuitively observe the X4 scan effect picture using this software. YDLIDAR provides X4 real-time point cloud data and real-time scanning frequency, and X4 version information can be read at the same time. And can save the scan data offline to an external file for further analysis.

Before using YDLIDAR, make sure that the X4 USB adapter board serial port driver is installed successfully, and check whether the X4 and PC USB ports are successfully interconnected. Run the evaluation software: PointCloudViewer.exe, select the corresponding serial port number and model number.

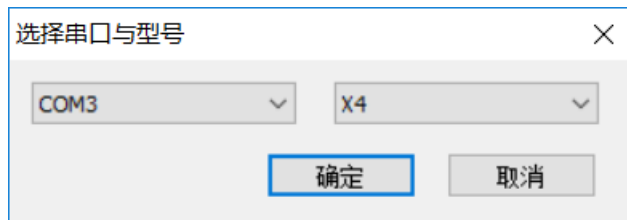


FIG 8 YDLIDAR X4 EVALUATION SOFTWARE

If the connection is normal, you will see the following screen:

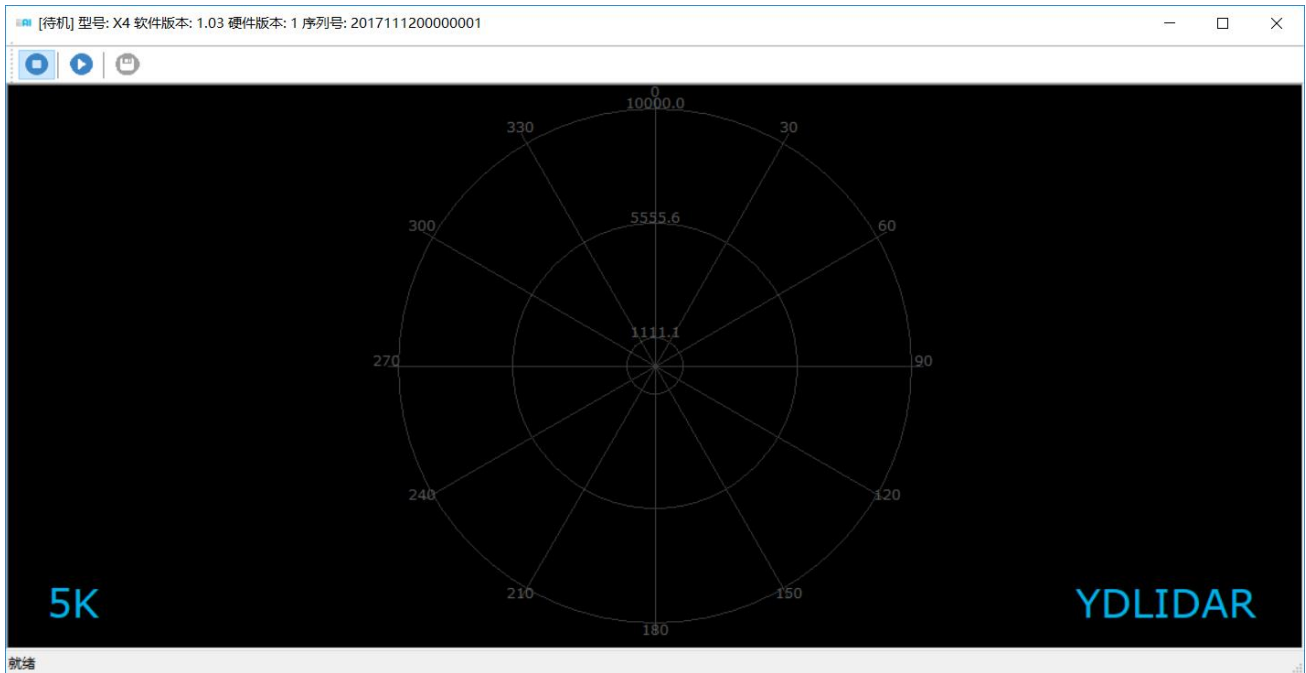








FIG 9 POINTCLOUD VIEWER EVALUATION SOFTWARE STARTUP DISPLAY

The title bar shows the software/hardware version and serial number information for this lidar.

   These are menu bars: Available when the icon is blue and unavailable when it is gray.

: Stop scanning: Lidar is in idle mode. In this mode, the lidar's motor is stopped and is in standby mode.

: Start scanning: Lidar will enter scanning mode. After starting the scan, point cloud data can be observed on the software interface.

: Save the scan data acquired by X4 to a file for easy viewing and analysis.

Click to start scanning; you can see the point cloud data in the software interface as shown below:

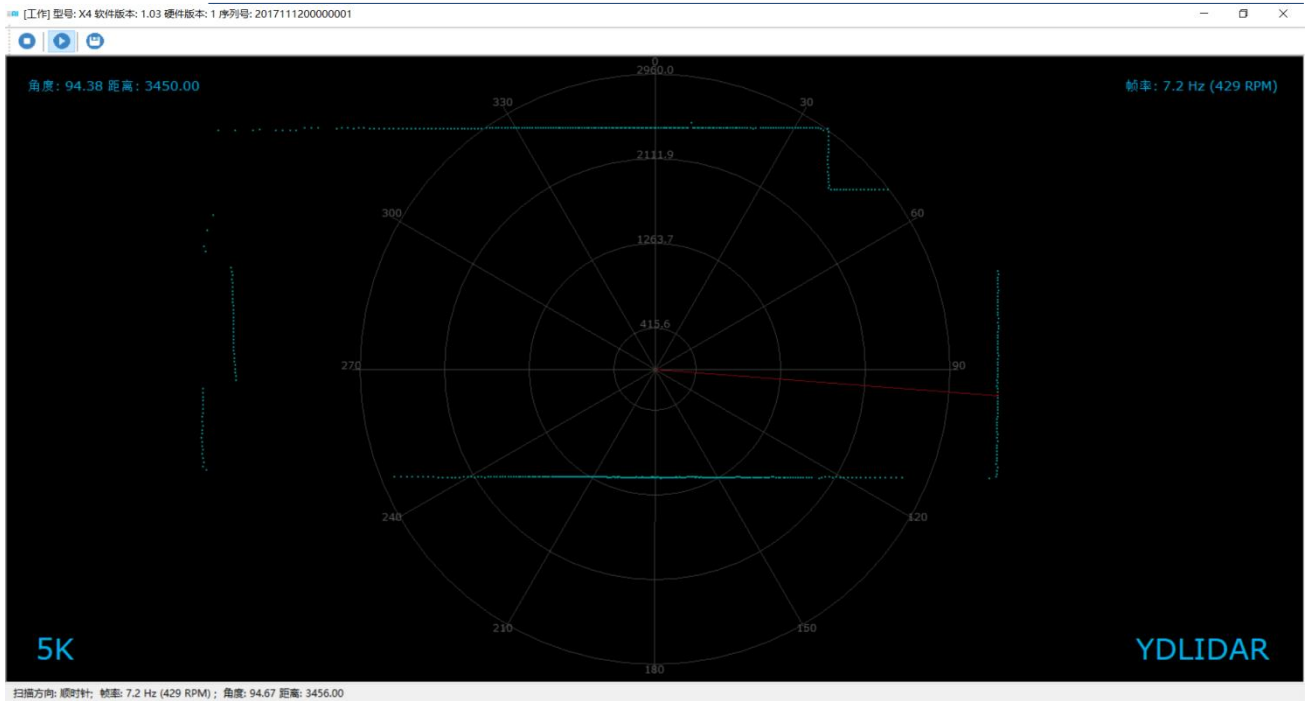


FIG 10 YDLIDAR X4 EVALUATION SOFTWARE

Move the mouse to any sampling point and you can see the distance value and angle of the point in the red text. The scanning frequency of the laser radar can be read from the text on the upper right of the screen.

## LINUX ROS OPERATION

Because there are many Linux versions, this article only uses Ubuntu 16.04, Kinetic version ROS as an example.

### File description

Download YDLIDAR's latest ROS driver package at <http://www.ydlidar.com/download>;

解压后打开 launch 文件夹，该目录下有如下文件:

CHART 2 LAUNCH FILE DESCRIPTION

File	Description
f4.launch	Run the file, F4 Lidar starts scanning, no data, no point cloud display
f4_view.launch	Run the file, Lidar F4 starts scanning and shows the point cloud
g4.launch	Run the file, G4 Lidar starts scanning, no data, no point cloud display
g4_view.launch	Run the file, Lidar G4 starts scanning and shows the point cloud
x4.launch	Run the file, X4 Lidar starts scanning, no data, no point cloud display
x4_view.launch	Run the file, Lidar X4 starts scanning and shows the point cloud
Lidar.launch	Run the file, Lidar (G4, F4 and X4) starts scanning, no data, no point cloud display
Lidar_view.launch	Run the file, Lidar (G4,F4 and X4) starts scanning and shows the point cloud



*Note 1: need to select the correct file to run, for example: X4 cannot run f4\_view.launch, you can run x4\_view.launch and Lidar\_view.launch;*

*Note 2: To run Lidar\_view.launch and Lidar.launch, you need to confirm that the Lidar.launch configuration information is correct. See the configuration instructions for details.*

## Configuration instructions

The X4 configuration file is saved in x4.launch. When modifying the parameters of Lidar.launch, refer to the configuration in x4.launch. The configuration instructions are as follows:

**CHART 3 CONFIGURATION INSTRUCTIONS**

File	Description
port	The lidar serial number defaults to ydlidar. When connecting multiple radars, the serial port will have a duplicate name error.
baudrate	Serial port baud rate: G4 default is: 230400
frame_id	Lidar coordinate system: default is laser_frame
angle_fixed	Lidar Angle Correction Settings: Default is true
intensities	Lidar signal strength settings, G4, X4, F4 fixed to false
angle_min	Lidar scan start angle soft setting: direction defaults to clockwise
angle_max	Lidar scan start angle soft setting: direction defaults to counterclockwise
range_min	Lidar minimum range: default is 0.08
range_max	Lidar maximum range: default is 16.0
ignore_array	Lidar scan angle hard setting: Default is not set. The system uses soft settings by default

In general, X4 can be configured as below:

```
<launch>
  <node name="ydlidar_node" pkg="ydlidar" type="ydlidar_node" output="screen">
    <param name="port" type="string" value="/dev/ydlidar"/>
    <param name="baudrate" type="int" value="128000"/>
    <param name="frame_id" type="string" value="laser_frame"/>
    <param name="angle_fixed" type="bool" value="true"/>
    <param name="intensities" type="bool" value="false"/>
    <param name="angle_min" type="double" value="-180" />
    <param name="angle_max" type="double" value="180" />
    <param name="range_min" type="double" value="0.08" />
    <param name="range_max" type="double" value="10.0" />
    <param name="ignore_array" type="string" value="" />
  </node>
  <node pkg="tf" type="static_transform_publisher" name="base_link_to_laser4"
    args="0.2245 0.0 0.2 0.12 0.0 0.0 /base_footprint /laser_frame 40" />
</launch>
```

FIG 11 X4.LAUNCH DEFAULT SETTING

## Device connection

Under Linux, the X4 and PC interconnect processes are consistent with those under Windows. See Device Connection under Window.

## ROS Driver Installation

Before doing the following, make sure that the Kinetic version ROS environment is installed correctly.

Specific steps are as follows:

- (1) Use the command to create the ydlidar\_ws workspace and copy the ROS driver package ydlidar in the X4 package to the ydlidar\_ws/src directory. Switch to the ydlidar\_ws workspace and compile again.

```
$ mkdir -p ~/ydlidar_ws/src
$ cd ~/ydlidar_ws
$ catkin_make
```

- (2) After the compilation is complete, add the ydlidar environment variable to the ~/.bashrc file and make it effective.

```
$ echo "source ~/ydlidar_ws/devel/setup.bash" >> ~/.bashrc
$ source ~/.bashrc
```

- (3) Add a device alias /dev/ydlidar to the X4 serial port.

```
$ cd ~/ydlidar_ws/src/ydlidar/startup
$ sudo chmod +x initenv.sh
$ sudo sh initenv.sh
```

## RVIZ installation

- (1) Online installation

```
$ sudo apt-get install python-serial ros-kinetic-serial g++ vim \
ros-kinetic-turtlebot-rviz-launchers
```

- (2) If there is a problem with the installation, update the source cache and reinstall it.

```
$ sudo apt-get update
```

## RVIZ Check the scan results

Run the launch file and open rviz to view the X4 scan results, as shown in the following figure:

```
$ roslaunch ydlidar x4_view.launch
```

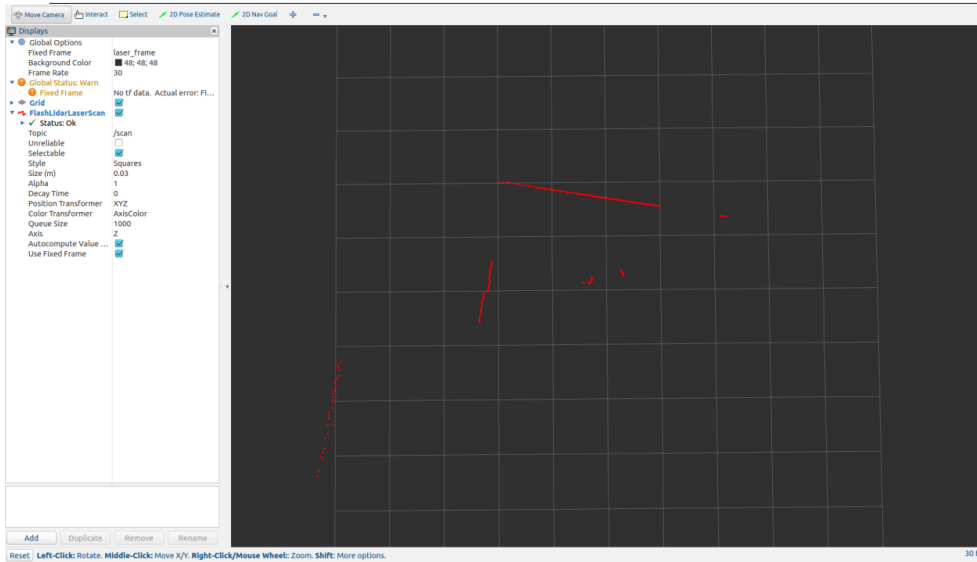


FIG 12 YDLIDAR X4 RVIZ

### Modify the scan angle problem

The scanning data seen by running the launch file is displayed by default with 360-degree data. To modify the display range, you need to modify the configuration parameters in the launch file. The specific operation is as follows:

- (1) Go to x4.launch's directory and use vim to edit x4.launch. The contents are as shown in the figure:

```
$ roscd ydlidar/launch
$ vim x4.launch
```

```
<launch>
  <node name="ydlidar_node" pkg="ydlidar" type="ydlidar_node" output="screen">
    <param name="port" type="string" value="/dev/ydlidar"/>
    <param name="baudrate" type="int" value="128000"/>
    <param name="frame_id" type="string" value="laser_frame"/>
    <param name="angle_fixed" type="bool" value="true"/>
    <param name="intensities" type="bool" value="false"/>
    <param name="angle_min" type="double" value="-180" />
    <param name="angle_max" type="double" value="180" />
    <param name="range_min" type="double" value="0.08" />
    <param name="range_max" type="double" value="10.0" />
    <param name="ignore_array" type="string" value="" />
  </node>
  <node pkg="tf" type="static_transform_publisher" name="base_link_to_laser4"
    args="0.2245 0.0 0.2 0.12 0.0 0.0 /base_footprint /laser_frame 40" />
</launch>
```

FIG 13 LIDAR.LAUNCH FILE

- (2) The X4 lidar coordinates follow the right-hand rule within ROS, with an angle range of [-180, 180]. "angle\_min" is the start angle, and "angle\_max" is the end angle. The specific scope needs to be modified according to actual use.

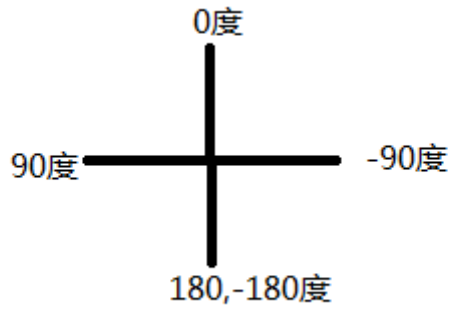


FIG 14 YDLIDAR X4 COORDINATE DEFINITION

## USE CAUTION

### Temperature

When the working environment temperature of X4 is too high or too low, it will affect the accuracy of the distance measuring system. It may also damage the structure of the scanning system and reduce the life of the X4 lidar. Avoid use in high temperature (>40 degrees Celsius) and low temperature (<0 degrees Celsius) conditions.

### Ambient lighting

The ideal working environment for the X4 is indoor, indoor lighting (including no light) will not affect the X4 work. However, avoid using a strong light source (such as a high-power laser) to directly illuminate the X4's vision system.

If you need to use it outdoors, please avoid that the X4's vision system is directly facing the sun. This may cause permanent damage to the vision system's sensor chip, thus invalidating the distance measurement.

Please note that the X4 standard version is subject to interference in outdoor strong sunlight reflection environments.

### Power demand

During the development process, since the drive current of the USB interface of each platform or the USB interface of the computer may be too low to drive the X4, the external power supply of the +4V to the X4 needs to be provided through the USB\_PWR interface of the USB interface board. It is not recommended to use mobile phone power bank because the voltage ripple of some brands of power bank is too large.