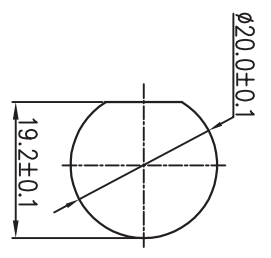
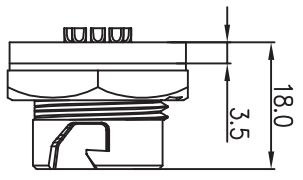


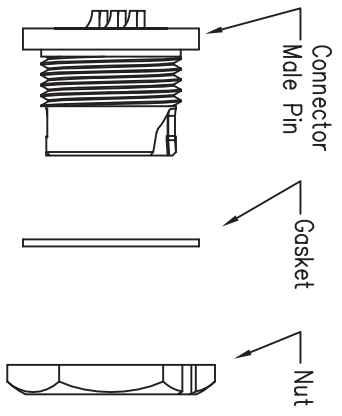
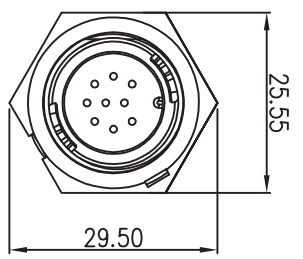
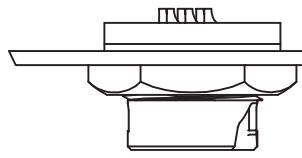
REV.	EON NO.	DESCRIPTION	SIGN	DATE
C1	N/A	INITIAL DRAWING	Liu	2020/05/17



Recommended Panel Cut-Out



Panel T: Max 2.5mm



Specification:

1. Operation Temperature: -45°C~105°C.
2. Insulation Resistance: 100MΩ at DC500V.
3. Contact Resistance: <10mΩ
4. Withstand Voltage: 1300V AC
5. Operating Current: 5A
6. Operating Voltage: DC 60V
7. Waterproof Rate: IP67 (Mated)
8. Housing: Nylon, Black
9. Male Pin: Copper Alloy, Gold Plated
10. Gasket: Silicon Gray
11. Panel Nut: Nylon, Orange
12. Torque Rate: 0.8~1.0N • m
13. RoHS Compliant.
14. UL Compliant. (Only 7Pin & 8Pin)
15. Mating Cap P/N: 806-00047-00

Pin	P/N:	Pin Assignments
7 Pin	23007535-01	Front View
8 Pin	23008535-01	Front View
9 Pin	23009535-01	Front View

23XXX535-01
Pin Number

Pin Assignments Front View

UNIT: mm
TOLERANCE
.X ±0.25
.XX ±0.15
.XXX ±0.05
ANGLES ±1°

DESCRIPTION
Middle Series Push Lock
Front Mount With Male Pin

PART NO
23XXX535-01

DRAWN BY
Liu

DATE
2020/05/17

DWG NO

CHECKED BY
Mo

DATE
2020/05/17

CUSTOMER

APPROVED BY
Adley

DATE
2020/05/17

SCALE: 1:1
REV: C1
SIZE: A4
SHEET: 1 OF 1
*: Inspection Item