



TEST REPORT

UL 62133-2

**Secondary cells and batteries containing alkaline or other non-acid electrolytes – Safety requirements for portable sealed secondary cells, and for batteries made from them, for use in portable applications –
Part 2: Lithium systems**

Report Number.....: CTB26050704401D01

Date of issue.....: 2026-06-17

Total number of pages.....: 26 pages

Applicant' s name.....: Shenzhen Elecrow Limited

Address.....: Elecrow, 5th Floor, Fengze Building B, Nanchang Huafeng Industrial Park, Hangcheng Street Hangkong Road, Baoan District, Shenzhen city, China

Test specification:

Standard.....: UL 62133-2-2020

Test procedure.....: Type Test

Test result.....: Pass

Non-standard test method.....: N/A

Testing laboratory.....: Shenzhen CTB Testing Technology Co., Ltd.

Address.....: 1&2/F, Building A, No. 26, Xinghe Road, Xinqiao, Xinqiao Street, Bao'an District, Shenzhen, Guangdong, China.

Testing location.....: As above

Test item description.....: Li-ion battery

Trade Mark.....: N/A

Manufacturer.....: Dongguan Pengxin Electronic Technology Co., Ltd.

Address.....: No. 17, Caotang Street, Zhongfang, Shatou, Chang'an Town, Dongguan City, Guangdong Province

Model/Type reference.....: 103040PL

Ratings.....: 3.7V, 1200mAh, 4.44Wh

Note:

This report shall not be reproduced except in full, without the written approval of Shenzhen CTB Testing Technology Co., Ltd. This report may be altered or revised by Shenzhen CTB Testing Technology Co., Ltd personnel only, and shall be noted in the revision section of the report. The test result in the report only apply to the tested samples.

Responsible Testing Laboratory (as applicable), testing procedure and testing location(s):		
<input checked="" type="checkbox"/>	Testing Laboratory:	Shenzhen CTB Testing Technology Co., Ltd.
Testing location/ address.....:		Floor 1&2, Building A, No. 26 of Xinhe Road, Xinqiao Community, Xinqiao Street, Baoan District, Shenzhen, Guangdong, China.
Tested by (name, signature).....:	Jaden Gao	<i>Jaden Gao</i>
Checked by(name, signature).....:	Terry Zhou	<i>Terry Zhou</i>
Approved by (name, signature).....:	Ming Zhu	<i>Ming Zhu</i>
<hr/>		
<input type="checkbox"/>	Testing procedure: CTF Stage 1:	
Testing location/ address.....:		
Tested by (name, function, signature).....:		
Approved by (name, function, signature)...:		
<hr/>		
<input type="checkbox"/>	Testing procedure: CTF Stage 2:	
Testing location/ address.....:		
Tested by (name + signature).....:		
Witnessed by (name, function, signature)..:		
Approved by (name, function, signature)...:		
<hr/>		
<input type="checkbox"/>	Testing procedure: CTF Stage 3:	
<input type="checkbox"/>	Testing procedure: CTF Stage 4:	
Testing location/ address.....:		
Tested by (name, function, signature).....:		
Witnessed by (name, function, signature)..:		
Approved by (name, function, signature)...:		
Supervised by (name, function, signature):		

List of Attachments (including a total number of pages in each attachment):

Attachment 1: Photo Documentation (4 pages).

Summary of testing:

Tests performed (name of test and test clause):

- cl.7.1 Charging procedure for test purposes (for Cells and Batteries);
- cl.7.2.1 Continuous charging at constant voltage (Cells);
- cl.7.2.2 Case stress at high ambient temperature (Batteries);
- cl.7.3.1 External short-circuit (Cells);
- cl.7.3.2 External short-circuit (Batteries);
- cl.7.3.3 Free fall (Cells and Batteries);
- cl.7.3.4 Thermal abuse (Cells);
- cl.7.3.5 Crush (Cells);
- cl.7.3.6 Over-charging of battery;
- cl.7.3.7 Forced discharge (Cells);
- cl.7.3.8 Mechanical tests (Batteries);
- cl.7.3.9 Design evaluation – Forced internal short-circuit (Cells).

The electrolyte type of this cell doesn't belong to polymer, and the additional test cl.7.3.9 was carried out to evaluate the cell.


Tests are made with the number of cells and batteries specified in UL 62133-2-2020.

Testing location:

Shenzhen CTB Testing Technology Co., Ltd.
 Floor 1&2, Building A, No. 26 of Xinhe Road, Xinqiao Community, Xinqiao Street, Baoan District, Shenzhen, Guangdong, China.

Copy of marking plate:

The artwork below may be only a draft. The use of certification marks on a product must be authorized by the respective NCBs that own these marks.

Li-ion battery	(Red)+	(Black)-
Model:103040PL		
Rated:3.7V,1200mAh,4.44Wh		
1ICP10/30/40	Date: YYYY/MM/DD	
Manufacturer:		
Dongguan Pengxin Electronic Technology Co., Ltd.		
Warning:		
Do not disassemble, crush, puncture, or short external wires.		
Do not dispose of in fire or water.		

Remark:

1.“YY” means year for manufacture;

“MM” means month for manufacture;

“DD” means day for manufacture.

2.The applicant and manufacturer information, product name, model, trademark and other information in this report are all provided by the applicant, and this laboratory is not responsible for verifying its authenticity.

Test item particulars :	
Classification of installation and use :	To be defined in final product
Supply Connection :	DC connector
Recommend charging method declared by the manufacturer :	Charging the battery with 240mA constant current until 4.2V, then constant voltage charge until the current reduces to 24mA, at ambient 20°C±5°C
Discharge current (0,2 It A) :	240mA
Specified final voltage :	3.0V
Upper limit charging voltage per cell :	4.2V
Maximum charging current :	1200mA
Charging temperature upper limit :	45°C
Charging temperature lower limit :	10°C
Polymer cell electrolyte type :	<input type="checkbox"/> gel polymer <input type="checkbox"/> solid polymer <input checked="" type="checkbox"/> N/A
Possible test case verdicts:	
- test case does not apply to the test object..... :	N/A
- test object does meet the requirement..... :	P (Pass)
- test object does not meet the requirement..... :	F (Fail)
Testing :	
Date of receipt of test item :	2026-05-22
Date (s) of performance of tests :	2026-05-22 to 2026-06-04
General remarks:	
<p>The test results presented in this report relate only to the object tested.</p> <p>This report shall not be reproduced, except in full, without the written approval of the Issuing testing laboratory.</p> <p>"(See Enclosure #)" refers to additional information appended to the report.</p> <p>"(See appended table)" refers to a table appended to the report.</p>	
Throughout this report a <input type="checkbox"/> comma / <input checked="" type="checkbox"/> point is used as the decimal separator.	
Name and address of factory (ies) :	Same as the Manufacturer

General product information and other remarks:

The battery is constructed with one lithium-ion cell in 1S1P, and has overcharge, over-discharge, over current and short-circuits proof circuit.

The main features of the battery are shown as below (clause 7.1.1):

Model	Nominal Capacity	Nominal Voltage	Nominal Charge Current	Nominal Discharge Current	Maximum Charge Current	Maximum Discharge Current	Maximum Charge Voltage	Cut-off Voltage
103040PL	1200mAh	3.7V	240mA	240mA	1200mA	1200mA	4.2V	3.0V

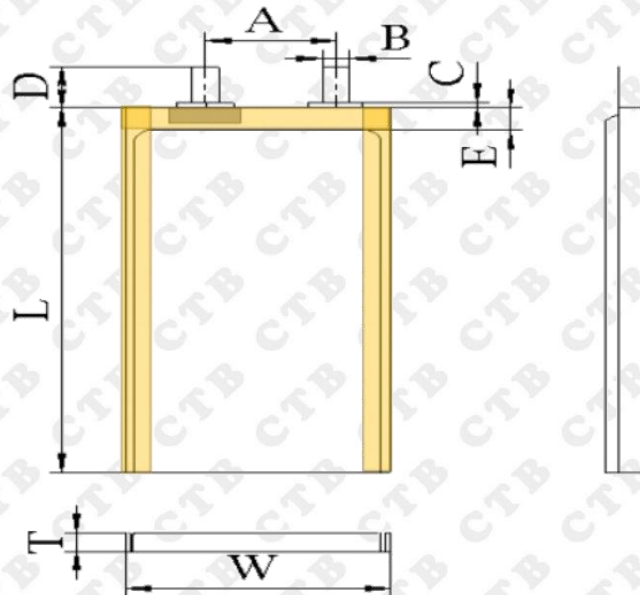
The main features of the cell in the battery are shown as below (clause 7.1.1):

Model	Nominal Capacity	Nominal Voltage	Nominal Charge Current	Nominal Discharge Current	Maximum Charge Current	Maximum Discharge Current	Maximum Charge Voltage	Cut-off Voltage
103040PL	1200mAh	3.7V	240mA	240mA	1200mA	1200mA	4.2V	3.0V

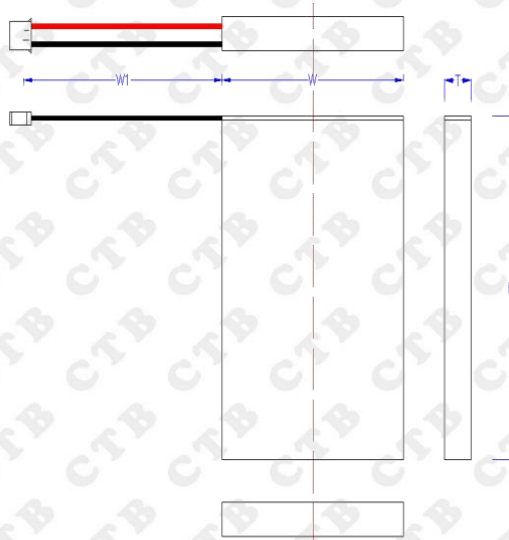
The main features of the cell in the battery are shown as below (clause 7.1.2):

Model	Upper Limit Charge Voltage	Taper-off Current	Lower Charge Temperature	Upper Charge Temperature
103040PL	4.2V	24mA	10°C	45°C

Construction:



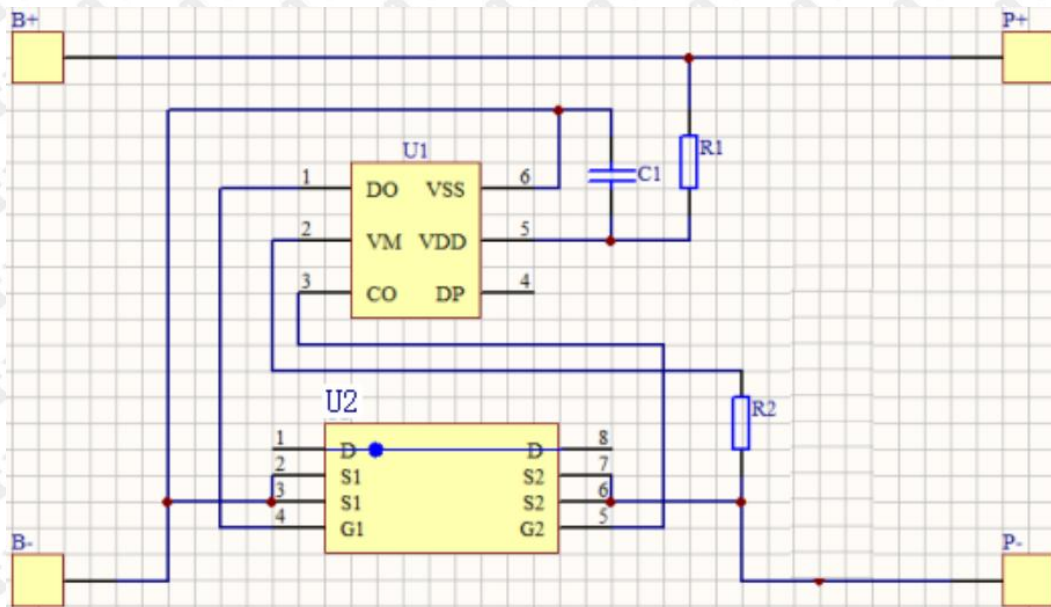
L:40.0(max),W:30.0(max),T:4.0(max)
Cell(Unit: mm)



W: Max 30. mm±0.5
 T: Max 10.3mm±0.2
 L: Max 42.0mm±1
 W1:40±5mm

Battery(Unit: mm)

Circuit diagram:



4	PARAMETER MEASUREMENT TOLERANCES		P
	Parameter measurement tolerances		P
5	GENERAL SAFETY CONSIDERATIONS		P
5.1	General		P
	Cells and batteries so designed and constructed that they are safe under conditions of both intended use and reasonably foreseeable misuse		P
5.2	Insulation and wiring		P
	The insulation resistance between the positive terminal and externally exposed metal surfaces of the battery (excluding electrical contact surfaces) is not less than 5 MΩ	No metal case exists.	N/A
	Insulation resistance (MΩ)..... :		—
	Internal wiring and insulation are sufficient to withstand maximum anticipated current, voltage and temperature requirements		P
	Orientation of wiring maintains adequate clearance and creep age distances between conductors		P
	Mechanical integrity of internal connections accommodates reasonably foreseeable misuse		P
5.3	Venting		P
	Battery cases and cells incorporate a pressure relief mechanism or are constructed so that they relieve excessive internal pressure at a value and rate that will preclude rupture, explosion and self-ignition	Venting mechanism exists on narrow side of the cell.	P
	Encapsulation used to support cells within an outer casing does not cause the battery to overheat during normal operation nor inhibit pressure relief		N/A
5.4	Temperature, voltage and current management		P
	Batteries are designed such that abnormal temperature rise conditions are prevented	Overcharge, over discharge, over current and short-circuit proof circuit used in this battery. See tests of clause 7.	P
	Batteries are designed to be within temperature, voltage and current limits specified by the cell manufacturer	See above.	P
	Batteries are provided with specifications and charging instructions for equipment manufacturers so that specified chargers are designed to maintain charging within the temperature, voltage and current limits specified	The charging limits specified in the manufacturer's specification.	P
5.5	Terminal contacts		P
	The size and shape of the terminal contacts ensure that they can carry the maximum anticipated current	lead wire complied with the requirements.	P

	External terminal contact surfaces are formed from conductive materials with good mechanical strength and corrosion resistance		P
	Terminal contacts are arranged to minimize the risk of short-circuit		P
5.6	Assembly of cells into batteries		P
5.6.1	General		P
	Each battery have an independent control and protection for current, voltage, temperature and any other parameter required for safety and to maintain the cells within their operating region	Overcharge, overdischarge, overcurrent and short-circuit proof circuit used in this battery	P
	This protection may be provided external to the battery such as within the charger or the end devices		N/A
	If protection is external to the battery, the manufacturer of the battery provide this safety relevant information to the external device manufacturer for implementation		N/A
	If there is more than one battery housed in a single battery case, each battery have protective circuitry that can maintain the cells within their operating regions	Single cell battery.	N/A
	Manufacturers of cells specify current, voltage and temperature limits so that the battery manufacturer/designer may ensure proper design and assembly	Current, Voltage and temperature limits specified by cell manufacturer.	P
	Batteries that are designed for the selective discharge of a portion of their series connected cells incorporate circuitry to prevent operation of cells outside the limits specified by the cell manufacturer		N/A
	Protective circuit components added as appropriate and consideration given to the end-device application		N/A
	The manufacturer of the battery provide a safety analysis of the battery safety circuitry with a test report including a fault analysis of the protection circuit under both charging and discharging conditions confirming the compliance	Safety analysis report provided by manufacturer.	P
5.6.2	Design recommendation		P
	For the battery consisting of a single cell or a single cellblock, it is recommended that the charging voltage of the cell does not exceed the upper limit of the charging voltage specified in Table 2	Max. charging voltage: 4.2V, not exceed 4.2V specified in Clause 7.1.2, Table 2.	P
	For the battery consisting of series-connected plural single cells or series-connected plural cellblocks, it is recommended that the voltages of any one of the single cells or single cellblocks does not exceed the upper limit of the charging voltage, specified in Table 2, by monitoring the voltage of every single cell or the single cellblocks		N/A

	For the battery consisting of series-connected plural single cells or series-connected plural cellblocks, it is recommended that charging is stopped when the upper limit of the charging voltage is exceeded for any one of the single cells or single cellblocks by measuring the voltage of every single cell or the single cellblocks		N/A
	For batteries consisting of series-connected cells or cell blocks, nominal charge voltage not be counted as an overcharge protection		N/A
	For batteries consisting of series-connected cells or cell blocks, cells have closely matched capacities, be of the same design, be of the same chemistry and be from the same manufacturer		N/A
	It is recommended that the cells and cell blocks not discharged beyond the cell manufacturer's specified final voltage	Final voltage of cell: 3.0V, not exceed the final voltage specified by the cell manufacturer.	P
	For batteries consisting of series-connected cells or cell blocks, cell balancing circuitry incorporated into the battery management system		N/A
5.6.3	Mechanical protection for cells and components of batteries		P
	Mechanical protection for cells, cell connections and control circuits within the battery provided to prevent damage as a result of intended use and reasonably foreseeable misuse	Mechanical protection for cell connections and control circuits provided.	P
	The mechanical protection can be provided by the battery case or it can be provided by the end product enclosure for those batteries intended for building into an end product	Build-in batteries, mechanical protection for cells should be provided by end product.	N/A
	The battery case and compartments housing cells designed to accommodate cell dimensional tolerances during charging and discharging as recommended by the cell manufacturer	To be evaluated in final systems.	N/A
	For batteries intended for building into a portable end product, testing with the battery installed within the end product considered when conducting mechanical tests		N/A
5.7	Quality plan		P
	The manufacturer prepares and implements a quality plan that defines procedures for the inspection of materials, components, cells and batteries and which covers the whole process of producing each type of cell or battery	Complied. Quality plan provided.	P
5.8	Battery safety components		P
	According annex F	See TABLE: Critical components information.	P

6	TYPE TEST AND SAMPLE SIZE		P
	Tests are made with the number of cells or batteries specified in Table 1 using cells or batteries that are not more than six months old		P
	Coin cells with resistance $\leq 3 \Omega$ (measured according annex D) are tested according table 1	Not coin cells.	N/A
	Unless otherwise specified, tests are carried out in an ambient temperature of $20 \text{ }^\circ\text{C} \pm 5 \text{ }^\circ\text{C}$		P
	The safety analysis of 5.6.1 identify those components of the protection circuit that are critical for short-circuit, overcharge and over discharge protection		P
	When conducting the short-circuit test, consideration given to the simulation of any single fault condition that is likely to occur in the protecting circuit that would affect the short-circuit test	See clause 7.3.2.	P

7	SPECIFIC REQUIREMENTS AND TESTS		P
7.1	Charging procedure for test purposes		P
7.1.1	First procedure		P
	This charging procedure applies to sub clauses other than those specified in 7.1.2		P
	Unless otherwise stated in this document, the charging procedure for test purposes is carried out in an ambient temperature of $20 \text{ }^\circ\text{C} \pm 5 \text{ }^\circ\text{C}$, using the method declared by the manufacturer		P
	Prior to charging, the battery have been discharged at $20 \text{ }^\circ\text{C} \pm 5 \text{ }^\circ\text{C}$ at a constant current of 0,2 It A down to a specified final voltage	See page 4.	P
7.1.2	Second procedure		P
	This charging procedure applies only to 7.3.1, 7.3.4, 7.3.5, and 7.3.9		P
	After stabilization for 1 h to 4 h, at an ambient temperature of the highest test temperature and the lowest test temperature, respectively, as specified in Table 2, cells are charged by using the upper limit charging voltage and maximum charging current, until the charging current is reduced to 0,05 It A, using a constant current to constant voltage charging method	Charge temperature $10^\circ\text{C}\sim 45^\circ\text{C}$ declared. 45°C used for upper limit tests, 10°C used for lower limit tests.	P
7.2	Intended use		P
7.2.1	Continuous charging at constant voltage (cells)	Tested complied.	P
	Fully charged cells are subjected for 7 days to a charge using the charging method for current and standard voltage specified by the cell manufacturer	Charging for 7 days with 240mA.	P
	Results: No fire. No explosion. No leakage..... :	(See appended table 7.2.1)	P
7.2.2	Case stress at high ambient temperature (battery)	Tested as client requested.	P
	Oven temperature ($^\circ\text{C}$)..... :	70°C	--

	Results: No physical distortion of the battery case resulting in exposure of internal protective components and cells	No physical distortion of the battery case.	P
7.3	Reasonably foreseeable misuse		P
7.3.1	External short-circuit (cell)	Tested complied.	P
	The cells were tested until one of the following occurred:		P
	- 24 hours elapsed; or		N/A
	- The case temperature declined by 20% of the maximum temperature rise		P
	Results: No fire. No explosion..... :	(See appended table 7.3.1)	P
7.3.2	External short-circuit (battery)	Tested complied.	P
	The batteries were tested until one of the following occurred:		P
	- 24 hours elapsed; or		N/A
	- The case temperature declined by 20 % of the maximum temperature rise		P
	In case of rapid decline in short circuit current, the battery pack remained on test for an additional one hour after the current reached a low end steady state condition		P
	A single fault in the discharge protection circuit conducted on one to four (depending upon the protection circuit) of the five samples before conducting the short-circuit test	Single fault conducted on four samples.	P
	A single fault applies to protective component parts such as MOSFET, fuse, thermostat or positive temperature coefficient (PTC) thermistor	Single fault applies on MOSFET(U2)	P
	Results: No fire. No explosion..... :	(See appended table 7.3.2)	P
7.3.3	Free fall		P
	Results: No fire. No explosion		P
7.3.4	Thermal abuse (cells)	Tested complied.	P
	Oven temperature (°C)..... :	130°C±2°C	—
	Results: No fire. No explosion	No fire. No explosion	P
7.3.5	Crush (cells)	Tested complied.	P
	The crushing force was released upon:		P
	- The maximum force of 13 kN±0,78kN has been applied; or		P
	- An abrupt voltage drop of one-third of the original voltage has been obtained		N/A
	Results: No fire. No explosion..... :	(See appended table 7.3.5)	P
7.3.6	Over-charging of battery	Tested complied.	P
	The supply voltage which is:		P

	- 1,4 times the upper limit charging voltage presented in Table A.1 (but not to exceed 6,0 V) for single cell/cell block batteries or	5.88V applied.	P
	- 1,2 times the upper limit charging voltage resented in Table A.1 per cell for series connected multi-cell batteries, and		N/A
	- Sufficient to maintain a current of 2,0 It A throughout the duration of the test or until the supply voltage is reached		P
	Test was continued until the temperature of the outer casing:		P
	- Reached steady state conditions (less than 10°C change in 30-minute period); or		P
	- Returned to ambient		P
	Results: No fire. No explosion..... :	(See appended table 7.3.6)	P
7.3.7	Forced discharge (cells)	Tested complied.	P
	If the discharge voltage reaches the negative value of upper limit charging voltage within the testing duration, the voltage is maintained at the negative value of the upper limit charging voltage by reducing the current for the remainder of the testing duration		N/A
	If the discharge voltage does not reach the negative value of upper limit charging voltage within the testing duration, the test is terminated at the end of the testing duration		P
	Results: No fire. No explosion..... :	(See appended table 7.3.7)	P
7.3.8	Mechanical tests (batteries)		P
7.3.8.1	Vibration	Tested complied.	P
	Results: No fire, no explosion, no rupture, no leakage or venting..... :	(See appended table 7.3.8.1)	P
7.3.8.2	Mechanical shock	Tested complied.	P
	Results: No leakage, no venting, no rupture, no explosion and no fire..... :	(See appended table 7.3.8.2)	P
7.3.9	Design evaluation – Forced internal short-circuit (cells)	Tested complied.	P
	The cells complied with national requirement for..... :	France, Japan, Republic of Korea, Switzerland	—
	The pressing was stopped upon:		P
	- A voltage drop of 50 mV has been detected; or		N/A
	- The pressing force of 800 N (cylindrical cells) or 400 N (prismatic cells) has been reached	400N for prismatic cells.	P
	Results: No fire..... :	(See appended table 7.3.9)	P

8	INFORMATION FOR SAFETY		P
8.1	General		P
	Manufacturers of secondary cells ensure that information is provided about current, voltage and temperature limits of their products	Information for safety mentioned in manufacturer's specifications.	P
	Manufacturers of batteries ensure that equipment manufacturers and, in the case of direct sales, end-users are provided with information to minimize and mitigate hazards	Information for safety mentioned in manufacturer's specifications.	P
	Systems analyses performed by device manufacturers to ensure that a particular battery design prevents hazards from occurring during use of a product		N/A
	As appropriate, any information relating to hazard avoidance resulting from a system analysis provided to the end user		N/A
	Do not allow children to replace batteries without adult supervision		P
8.2	Small cell and battery safety information	Not small cell and battery	N/A
	The following warning language is to be provided with the information packaged with the small cells and batteries or equipment using them:		N/A
	- Keep small cells and batteries which are considered swallow able out of the reach of children		N/A
	- Swallowing may lead to burns, perforation of soft tissue, and death. Severe burns can occur within 2 h of ingestion		N/A
	- In case of ingestion of a cell or battery, seek medical assistance promptly		N/A

9	MARKING		P
9.1	Cell marking	The final product is battery.	N/A
	Cells marked as specified in IEC 61960, except coin cells		N/A
	Coin cells whose external surface area is too small to accommodate the markings on the cells show the designation and polarity		N/A
	By agreement between the cell manufacturer and the battery and/or end product manufacturer, component cells used in the manufacture of a battery need not be marked		N/A
9.2	Battery marking		P
	Batteries marked as specified in IEC 61960, except for coin batteries	The battery is marked in accordance with IEC 61960, also see page 3.	P

	Coin batteries whose external surface area is too small to accommodate the markings on the batteries show the designation and polarity. Batteries also marked with an appropriate caution statement	Not coin cell.	N/A
	Terminals have clear polarity marking on the external surface of the battery	The "+" and "-" polarity explicitly marked on surface of the battery.	P
	Batteries with keyed external connectors designed for connection to specific end products need not be marked with polarity markings if the design of the external connector prevents reverse polarity connections		P
9.3	Caution for ingestion of small cells and batteries		N/A
	Coin cells and batteries identified as small batteries according to 8.2 include a caution statement regarding the hazards of ingestion in accordance with 8.2	Not coin cells and batteries.	N/A
	When small cells and batteries are intended for direct sale in consumer-replaceable applications, caution for ingestion given on the immediate package	Not intended for direct sale.	N/A
9.4	Other information		P
	Storage and disposal instructions	Information for safety mentioned in manufacturer's specifications.	P
	Recommended charging instructions	Information for safety mentioned in manufacturer's specifications.	P

10	PACKAGING AND TRANSPORT		N/A
	Packaging for coin cells not small enough to fit within the limits of the ingestion gauge of Figure 3	Not coin cells.	N/A
	The materials and packaging design are chosen so as to prevent the development of unintentional electrical conduction, corrosion of the terminals and ingress of environmental contaminants		N/A

ANNEX A	CHARGING AND DISCHARGING RANGE OF SECONDARY LITHIUM ION CELLS FOR SAFE USE		P
A.1	General		P
A.2	Safety of lithium ion secondary battery	Complied.	P
A.3	Consideration on charging voltage	Complied.	P
A.3.1	General		P
A.3.2	Upper limit charging voltage	4.2V	P
A.3.2.1	General		P
A.3.2.2	Explanation of safety viewpoint		N/A
A.3.2.3	Safety requirements, when different upper limit charging voltage is applied	4.2V applied.	N/A

A.4	Consideration of temperature and charging current		P
A.4.1	General		P
A.4.2	Recommended temperature range	See A.4.2.2.	P
A.4.2.1	General		P
A.4.2.2	Safety consideration when a different recommended temperature range is applied	Charging temperature range declared by client is: 10°C~45°C	P
A.4.3	High temperature range		N/A
A.4.3.1	General		N/A
A.4.3.2	Explanation of safety viewpoint		N/A
A.4.3.3	Safety considerations when specifying charging conditions in the high temperature range		N/A
A.4.3.4	Safety considerations when specifying a new upper limit in the high temperature range		N/A
A.4.4	Low temperature range		N/A
A.4.4.1	General		N/A
A.4.4.2	Explanation of safety viewpoint		N/A
A.4.4.3	Safety considerations, when specifying charging conditions in the low temperature range		N/A
A.4.4.4	Safety considerations when specifying a new lower limit in the low temperature range		N/A
A.4.5	Scope of the application of charging current		P
A.4.6	Consideration of discharge		P
A.4.6.1	General		P
A.4.6.2	Final discharge voltage and explanation of safety viewpoint		P
A.4.6.3	Discharge current and temperature range		P
A.4.6.4	Scope of application of the discharging current		P
A.5	Sample preparation		P
A.5.1	General		P
A.5.2	Insertion procedure for nickel particle to generate internal short		P
A.5.3	Disassembly of charged cell		P
A.5.4	Shape of nickel particle		P
A.5.5	Insertion of nickel particle in cylindrical cell		N/A
A.5.5.1	Insertion of nickel particle in winding core		N/A
A.5.5.2	Marking the position of the nickel particle on both ends of the winding core of the separator		N/A
A.5.6	Insertion of nickel particle in prismatic cell		P

A.6	Experimental procedure of the forced internal short-circuit test		P
A.6.1	Material and tools for preparation of nickel particle		P
A.6.2	Example of a nickel particle preparation procedure		P
A.6.3	Positioning (or placement) of a nickel particle		P
A.6.4	Damaged separator precaution		P
A.6.5	Caution for rewinding separator and electrode		P
A.6.6	Insulation film for preventing short-circuit		P
A.6.7	Caution when disassembling a cell		P
A.6.8	Protective equipment for safety		P
A.6.9	Caution in the case of fire during disassembling		P
A.6.10	Caution for the disassembling process and pressing the electrode core		P
A.6.11	Recommended specifications for the pressing device		P

ANNEX B	RECOMMENDATIONS TO EQUIPMENT MANUFACTURERS AND BATTERY ASSEMBLERS		N/A
----------------	--	--	-----

ANNEX C	RECOMMENDATIONS TO THE END-USERS		N/A
----------------	---	--	-----

ANNEX D	MEASUREMENT OF THE INTERNAL AC RESISTANCE FOR COIN CELLS		N/A
D.1	General	Not coin cells.	N/A
D.2	Method		N/A
	A sample size of three coin cells is required for this measurement.....:		N/A
	Coin cells with an internal resistance of less than or equal to 3 Ω are subjected to the testing according to Clause 6 and Table 1		N/A
	Coin cells with an internal resistance greater than 3 Ω require no further testing		N/A

ANNEX E	PACKAGING AND TRANSPORT		N/A
----------------	--------------------------------	--	-----

ANNEX F	COMPONENT STANDARDS REFERENCES		N/A
----------------	---------------------------------------	--	-----

TABLE: Critical components information					P
Object/part no.	Manufacturer/ trademark	Type/model	Technical data	Standard	Mark(s)of conformity ¹⁾
Cell	Dongguan Pengxin Electronic Technology Co., Ltd.	103040PL	3.7V,1200mAh	UL 62133-2-2020	Tested with appliance
-Positive electrode	Xinxiang Hongli Supply Source Technology Co.,Ltd.	HL04	LiMn ₂ O ₄	--	--
-Negative electrode	Henan Liyuan Cobalt Industry Co., Ltd.	LY-1	Graphite	--	--
-Electrolyte	Xinxiang Huarui lithium New Energy Co., Ltd.	HR-HL10	LiPF ₆ +DEC+EC+EMC, Conductivity:10.5mS/cm, H ₂ O<20ppm	--	--
-Separator	Anhui New Yongtuo New Materials Co., Ltd.	PE, 0.016x61mm	PE,Shutdown temperature: 130°C 0.016x61mm	--	--
PCB	Shenzhen Lihangxing Technology Co., Ltd.	1835	94-V0,130°C	UL 796	UL E486889
IC(U1)	Shenzhen Huaxuanyang Electronics Co., Ltd.	DW01	Overcharge detection voltage: 4.28±50mV Over discharge detection voltage: 2.4±100mV	--	Tested with appliance
MOSFET(U2)	Shenzhen Huaxuanyang Electronics Co., Ltd.	8205A	VDS:20V VGS:±12V ID:11A (@TA=25°C),	--	Tested with appliance
Lead wire	Wenzhou Jingke Electronics Co., LTD	3239	200°C,300V,24AWG	--	Tested with appliance
Connector	ZHONGSHAN ROILON ENGINEERING PLASTICS CO LTD	HDGC1002H-3P	-25°C to +85°C 94V-0	--	Tested with appliance

Supplementary information:

¹⁾ Provided evidence ensures the agreed level of compliance.

7.2.1 TABLE: Continuous charging at constant voltage (cells)				P
Sample no.	Recommended charging voltage Vc (Vdc)	Recommended charging current I _{rec} (mA)	OCV before test (Vdc)	Results
Cell #1	4.20	240	4.18	P
Cell #2	4.20	240	4.18	P
Cell #3	4.20	240	4.19	P
Cell #4	4.20	240	4.19	P
Cell #5	4.20	240	4.18	P

Supplementary information:
 - No fire or explosion
 - No leakage

7.3.1 TABLE: External short-circuit (cell)					P
Sample no.	Ambient T (°C)	OCV before test (Vdc)	Resistance of circuit (mΩ)	Maximum case temperature, (°C)	Results
Samples charged at charging temperature upper limit (45°C)					
Cell #6	56.2	4.15	93	123.6	P
Cell #7	56.2	4.15	89	118.5	P
Cell #8	56.2	4.16	92	122.3	P
Cell #9	56.2	4.16	91	119.2	P
Cell #10	56.2	4.16	85	124.1	P
Samples charged at charging temperature lower limit (10°C)					
Cell #11	57.5	4.08	86	123.9	P
Cell #12	57.5	4.09	92	124.5	P
Cell #13	57.5	4.09	89	121.7	P
Cell #14	57.5	4.08	92	121.3	P
Cell #15	57.5	4.09	86	119.6	P

Supplementary information:
 - No fire or explosion

7.3.2 TABLE: External short-circuit (battery)						P
Sample no.	Ambient (°C)	OCV before test (Vdc)	Resistance of circuit (mΩ)	Maximum case temperature, (°C)	Component single fault condition	Results
Battery #4	22.1	4.18	89	85.6	MOSFET(U2) Short circuit	P
Battery #5	22.1	4.19	83	92.3	MOSFET(U2) Short circuit	P
Battery #6	22.1	4.18	95	85.7	MOSFET(U2) Short circuit	P
Battery #7	22.1	4.19	89	87.1	MOSFET(U2) Short circuit	P
Battery #8	22.1	4.18	85	24.6	--	P
Supplementary information: - No fire or explosion						

7.3.5 TABLE: Crush (cells)					P
Sample no.	OCV before test (Vdc)	OCV at removal of crushing force (Vdc)	Maximum force applied to the cell during crush (kN)	Results	
Samples charged at charging temperature upper limit (45°C)					
Cell #29	4.15	4.15	13	P	
Cell #30	4.15	4.15	13	P	
Cell #31	4.16	4.16	13	P	
Cell #32	4.15	4.15	13	P	
Cell #33	4.16	4.16	13	P	
Samples charged at charging temperature lower limit (10°C)					
Cell #34	4.08	4.08	13	P	
Cell #35	4.08	4.08	13	P	
Cell #36	4.09	4.09	13	P	
Cell #37	4.08	4.08	13	P	
Cell #38	4.09	4.09	13	P	
Supplementary information: - No fire or explosion					

7.3.6 TABLE: Over-charging of battery				P
Constant charging current (A).....:		2.4		—
Supply voltage (Vdc).....:		5.88		—
Sample no.	OCV before charging (Vdc)	Total charging time (minute)	Maximum outer case temperature (°C)	Results
Battery #12	3.33	90	36.9	P
Battery #13	3.42	90	33.5	P
Battery #14	3.36	90	35.7	P
Battery #15	3.41	90	33.9	P
Battery #16	3.36	90	32.6	P
Supplementary information:				
- No fire or explosion				

7.3.7 TABLE: Forced discharge (cells)				P
Sample no.	OCV before application of reverse charge (Vdc)	Measured reverse charge I _t (mA)	Lower limit discharge voltage (Vdc)	Results
Cell #39	3.36	1200	3.0	P
Cell #40	3.39	1200	3.0	P
Cell #41	3.32	1200	3.0	P
Cell #42	3.41	1200	3.0	P
Cell #43	3.36	1200	3.0	P
Supplementary information:				
- No fire or explosion				

7.3.8.1 TABLE: Vibration					P
Sample no.	OCV before test (Vdc)	OCV after test (Vdc)	Mass before test (g)	Mass after test (g)	Results
Battery #17	4.19	4.18	22.359	22.357	P
Battery #18	4.18	4.18	22.362	22.358	P
Battery #19	4.19	4.19	22.353	22.351	P
Supplementary information:					
<ul style="list-style-type: none"> - No fire or explosion - No rupture - No leakage - No venting 					

7.3.8.2 TABLE: Mechanical shock					P
Sample no.	OCV before test (Vdc)	OCV after test (Vdc)	Mass before test (g)	Mass after test (g)	Results
Battery #20	4.18	4.18	22.356	22.351	P
Battery #21	4.18	4.18	22.347	22.345	P
Battery #22	4.19	4.19	22.355	22.353	P

Supplementary information:

- No fire or explosion
- No rupture
- No leakage
- No venting

7.3.9 TABLE: Forced internal short circuit (cells)					P
Sample no.	Chamber ambient T (°C)	OCV before test (Vdc)	Particle location ¹⁾	Maximum applied pressure (N)	Results
Samples charged at charging temperature upper limit (45°C)					
Cell #44	45	4.15	1	400	P
Cell #45	45	4.15	1	400	P
Cell #46	45	4.16	1	400	P
Cell #47	45	4.16	1	400	P
Cell #48	45	4.15	1	400	P
Samples charged at charging temperature lower limit (10°C)					
Cell #49	10	4.09	1	400	P
Cell #50	10	4.09	1	400	P
Cell #51	10	4.08	1	400	P
Cell #52	10	4.09	1	400	P
Cell #53	10	4.08	1	400	P

Supplementary information:

¹⁾Identify one of the following:

- 1: Nickel particle inserted between positive and negative (active material) coated area.
- 2: Nickel particle inserted between positive aluminium foil and negative active material coated area.

- No fire or explosion

D.2 TABLE: Internal AC resistance for coin cells				N/A
Sample no.	Ambient T (°C)	Store time (h)	Resistance Rac (Ω)	Results ¹⁾
--	--	--	--	--
--	--	--	--	--
--	--	--	--	--

Supplementary information:

Product: Li-ion battery

Type Designation: 103040PL

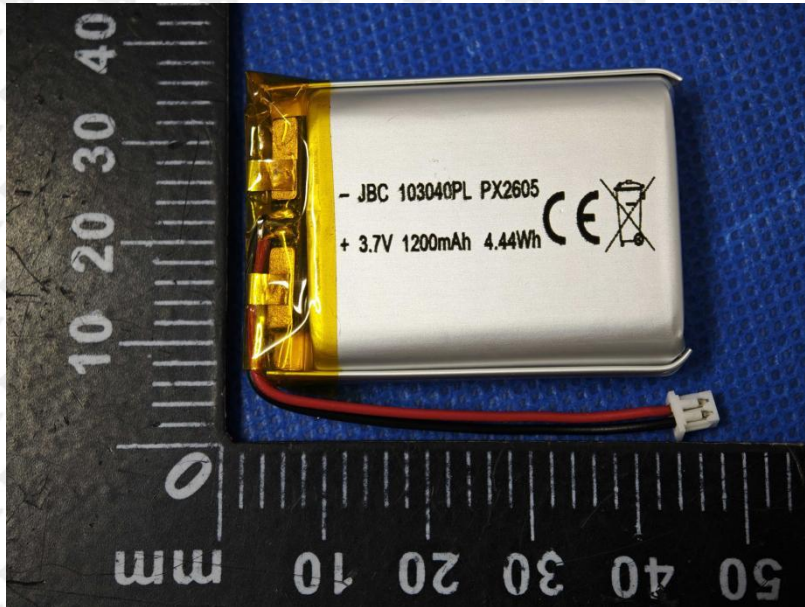


Figure 1 Front view of battery

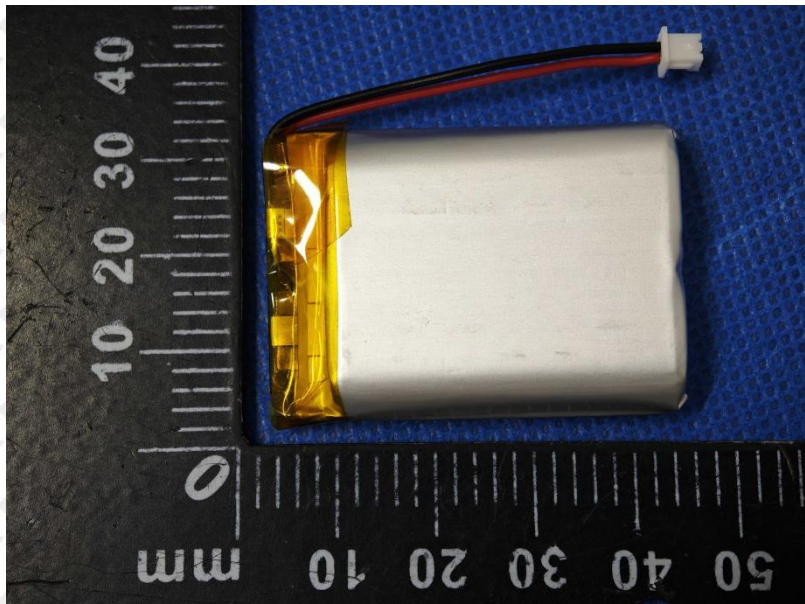


Figure 2 Back view of battery

Product: Li-ion battery

Type Designation: 103040PL

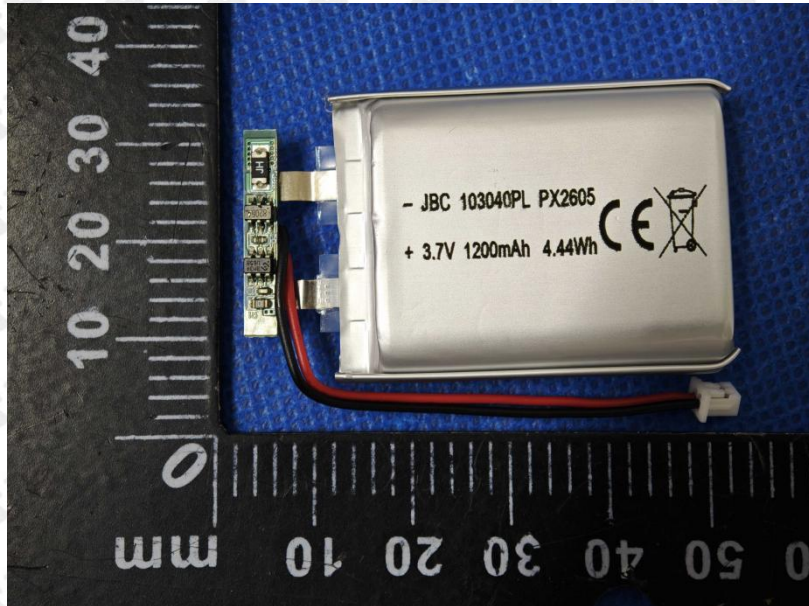


Figure 3 Internal photo of battery

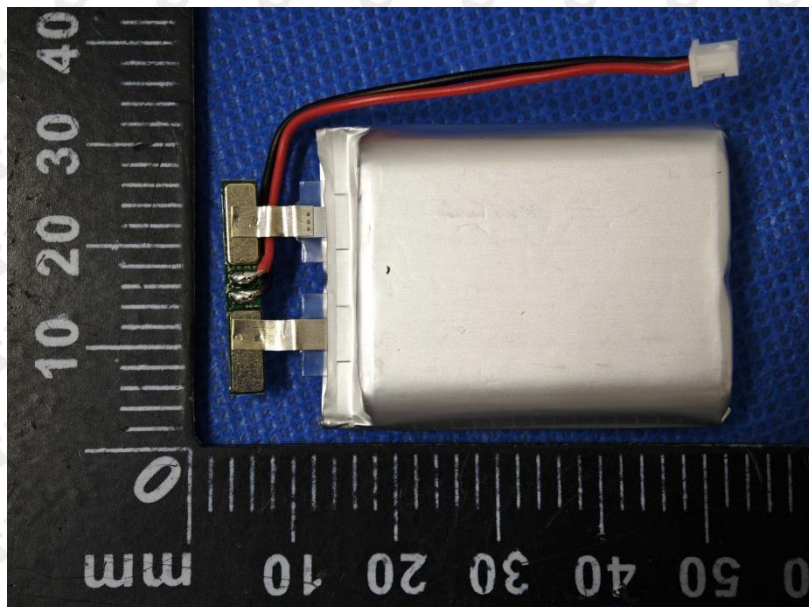


Figure 4 Internal photo of battery

Product: Li-ion battery

Type Designation: 103040PL

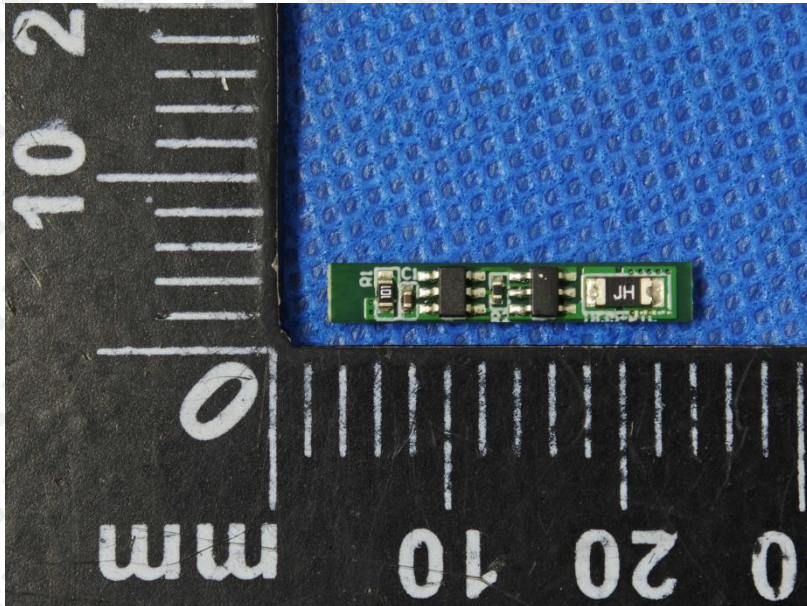


Figure 5 Front view of PCB

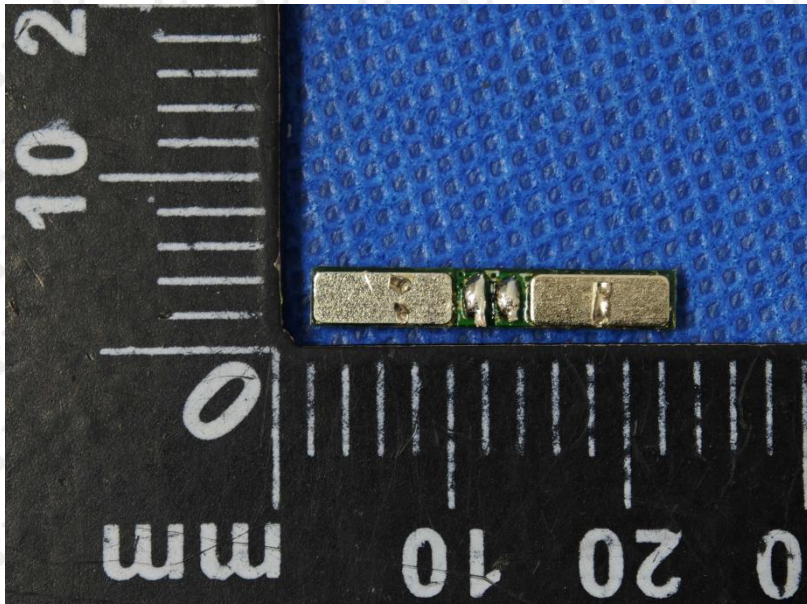


Figure 6 Back view of PCB

Product: Li-ion battery

Type Designation: 103040PL

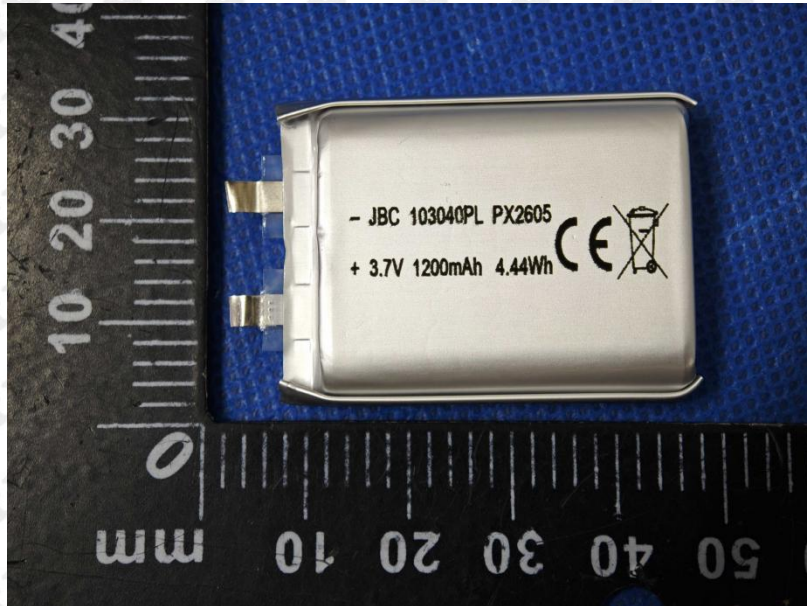


Figure 7 Front view of cell

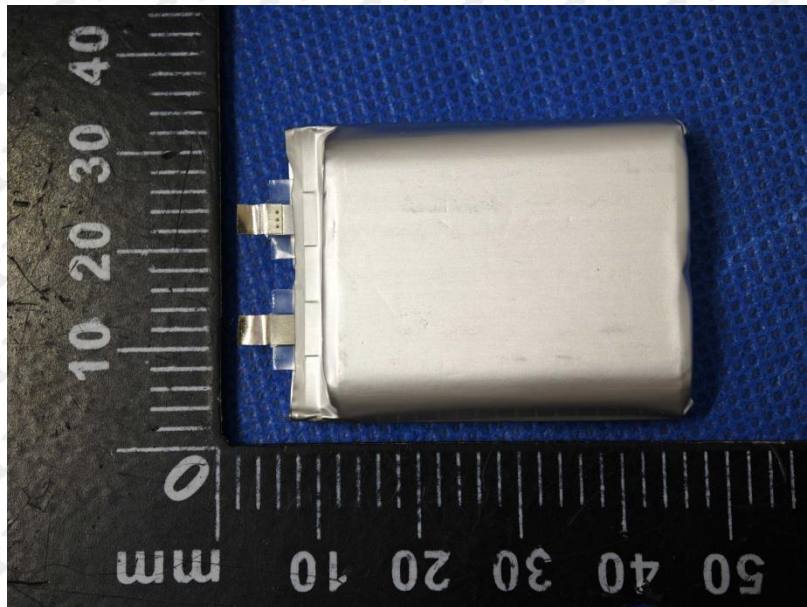


Figure 8 Back view of cell

-- End of Report --