

# EMC TEST REPORT

Product Name: CrowView Mechanical Clamping Display

Trade mark: /

Model No.: CrowView 14-inch, CrowView 12.5-inch, CrowView 13.3-inch,  
CrowView 15.6-inch

S/N: /

Report No.: CTB230731017E

Applicant: Shenzhen Elecrow Limited

Address: Park, Hangcheng Street Hangkong Road, Baoan District, Shenzhen city,  
China

Manufacturer: Shenzhen Elecrow Limited

Address: Elecrow, 5th Floor, Fengze Building B, Nanchang Huafeng Industrial Park,  
Hangcheng Street Hangkong Road, Baoan District, Shenzhen city, China

Prepared by: Shenzhen CTB Testing Technology Co., Ltd.

Address: 1&2/F., Building A, No.26, Xinhe Road, Xinqiao, Xinqiao Street, Bao'an District,  
Shenzhen, Guangdong, China

Date of Receipt: Jul. 11, 2023

Date of Test(s): Jul. 12, 2023 to Jul. 29, 2023

Date of Issue: Aug. 07, 2023

Test Standard(s): CFR47, FCC Part 15 Subpart B, ANSI C63.4: 2014

Test Result: Pass

In the configuration tested, the EUT complied with the standards specified above

Compiled by:

*Blake Cai*

Blake Cai

Reviewed by:

*Zack Zhu*

Zack Zhu

Approved by:



Note: If there is any objection to the inspection results in this report, please submit a written report to the company within 15 days from the date of receiving the report. The test report is effective only with both signature and specialized stamp. This result(s) shown in this report refer only to the sample(s) tested. Without written approval of Shenzhen CTB Testing Technology Co., Ltd. this report can't be reproduced except in full. The tested sample(s) and the sample information are provided by the client. "\*" indicates the testing items were fulfilled by subcontracted lab. "#" indicates the items are not in CNAS accreditation scope.

## Table of Contents

1.	Description of version .....	3
2.	Test summary.....	4
3.	Measurement uncertainty .....	5
4.	General information.....	6
4.1.	Description of EUT .....	6
4.2.	Description of accessory device .....	6
4.3.	Test conditions .....	6
4.4.	Block diagram of EUT configuration .....	7
4.5.	Operating condition of EUT .....	7
5.	List of Test and Measurement Instruments .....	8
6.	Conducted Emission .....	9
6.1.	Limit.....	9
6.2.	Test setup .....	9
6.3.	EMI test receiver setup .....	9
6.4.	Test procedure .....	9
6.5.	Test results .....	10
7.	Radiated emissions.....	12
7.1.	Limit.....	12
7.2.	Test setup .....	12
7.3.	EMI test receiver setup and spectrum analyzer setup .....	13
7.4.	Test procedure .....	13
7.5.	Corrected Amplitude & Margin Calculation .....	13
7.6.	Test results .....	14
8.	Photographs of test setup .....	16
9.	Photographs of EUT.....	17

## 1. Description of version

Report No.	Issue Date	Description	Approved
CTB230731017E	Aug. 07, 2023	Original	Valid

## 2. Test summary

Test procedures according to the technical standards:

Standard	Test Item	Test Result
§15.107	Conducted Emission	PASS
§15.109	Radiated Emission	PASS

### 3. Measurement uncertainty

The reported uncertainty of measurement  $y \pm U$ , where expanded uncertainty  $U$  is based on a standard

Test Item	Frequency	Expanded Uncertainty ( $U_{Lab}$ )
Conducted Emission	150 kHz to 30 MHz	$\pm 3.2$ dB
Radiated Emission	30 MHz to 1000 MHz	$\pm 4.8$ dB

uncertainty multiplied by a coverage factor of  $k=2$ , providing a level of confidence of approximately 95 %

#### 4. General information

##### 4.1. Description of EUT

Product name	CrowView Mechanical Clamping Display
Trade mark	/
Model No.	CrowView 14-inch
Serial Model No.	CrowView 12.5-inch, CrowView 13.3-inch, CrowView 15.6-inch
Model Difference	All model's the function, software and electric circuit are the same. Only with a product color, shape and model named different. Test Sample Model: CrowView 14-inch.
Rated Power	10W
Rated Voltage& current	AC 100-240V 50/60Hz, 0.4A
Configuration	<input checked="" type="checkbox"/> Table-top <input type="checkbox"/> Floor-standing
The highest frequency of the internal sources of the EUT	<input type="checkbox"/> below 1.705 MHz, the measurement shall only be made up to 30 MHz. <input checked="" type="checkbox"/> between 1.705 MHz and 108 MHz, the measurement shall only be made up to 1 GHz. <input type="checkbox"/> between 108 MHz and 500 MHz, the measurement shall only be made up to 2 GHz. <input type="checkbox"/> between 500 MHz and 1 GHz, the measurement shall only be made up to 5 GHz. <input type="checkbox"/> above 1 GHz, the measurement shall be made up to 5th harmonic of the highest frequency or 40 GHz, whichever is lower.
Adapter Information	Model No.: MF-05002000SM1 Input: AC 100-240V 50/60Hz, 0.4A Output: 5V $\overline{\text{---}}$ 2A

**Note:** The above EUT information is declared by manufacturer and for more detailed features description, please refer to the manufacturer's specifications or the User's Manual.

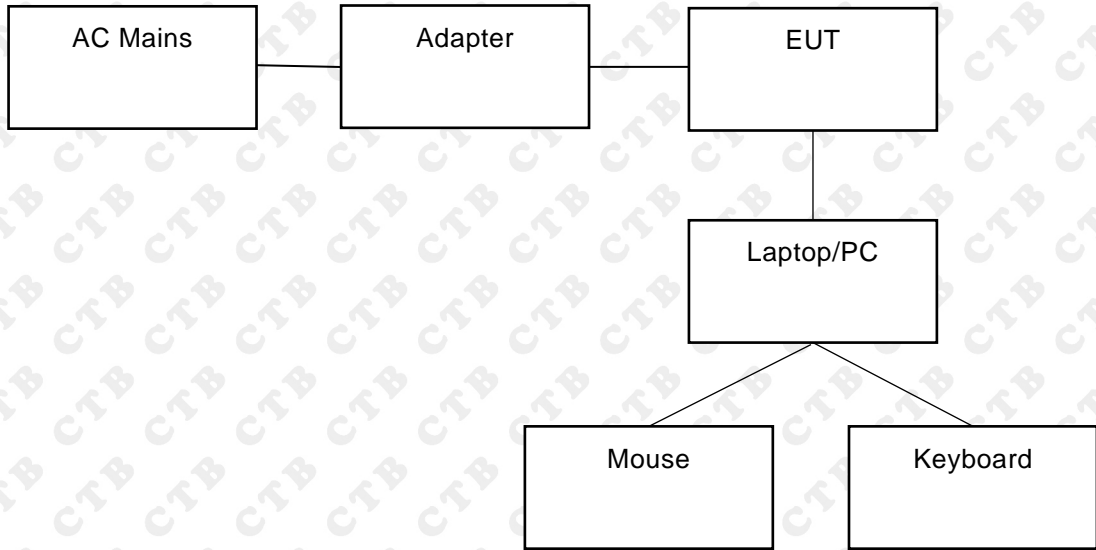
##### 4.2. Description of accessory device

No.	Device Type	Brand	Model	Specification	Note
1	Laptop	DELL	Vostro 5490	/	/
2	PC	DELL	Inspiron 3670	/	/
3	Mouse	DELL	KB216t	/	/
4	Keyboard	DELL	MS116c	/	/

##### 4.3. Test conditions

Temperature: 15-25°C  
 Relative Humidity: 30-60 %  
 Atmospheric pressure: 800hPa-1060hPa

**4.4. Block diagram of EUT configuration**



**4.5. Operating condition of EUT**

Operating condition	Mode 1*	HDMI Input	Test Voltage	AC 120V/60Hz
	Mode 2	TYPE-C Input	Test Voltage	AC 120V/60Hz

Note: This test covers all possible operating modes of the device, only the worst data are listed in the report. The worst data are shown (\*). This is the nearest standard limit which was recorded in this report.

**5. List of Test and Measurement Instruments**

Continuous disturbance					
No.	Equipment	Manufacturer	Model No.	Serial No.	Calibrated until
1	843 Shield Room	C/ R/ T	843	/	2024/8/11
2	AMN	ROHDE&SCHWARZ	ESH3-Z5	831551852	2024/7/04
3	Pulse limiter	ROHDE&SCHWARZ	ESH3Z2	357881052	2024/7/04
4	EMI TEST RECEIVER	ROHDE&SCHWARZ	ESCS30	834115/006	2024/7/04
5	Coaxial cable	ZDECL	Z302S	18091904	2024/7/04
6	AAN	Schwarzbeck	NTFM8158	183	2024/7/07
7	EZ-EMC	Frad	EMC-con3A1.1	/	/

Radiated emission					
No.	Equipment	Manufacturer	Model No.	Serial No.	Calibrated until
1	966 Chamber	C/ R/ T	966	/	2024/8/11
2	Double Ridged Broadband Horn Antenna	Schwarzbeck	BBHA 9120D	1911	2026/7/07
3	TRILOG Broadband Antenna	Schwarzbeck	VULB 9168	869	2024/7/07
4	Amplifier	Agilent	8449B	3008A01838	2024/7/04
5	Amplifier	HP	8447E	2945A02747	2024/7/04
6	EMI TEST RECEIVER	ROHDE&SCHWARZ	ESPI7	100362	2024/7/04
7	Coaxial cable	ETS	RFC-SNS-100-NMS-80 NI	/	2024/7/04
8	Coaxial cable	ETS	RFC-SNS-100-NMS-20 NI	/	2024/7/04
9	Coaxial cable	ETS	RFC-SNS-100-SMS-20 NI	/	2024/7/04
10	Coaxial cable	ETS	RFC-NNS-100-NMS-300 NI	/	2024/7/04
11	EZ-EMC	Frad	EMC-con3A1.1	/	/



## 6. Conducted Emission

### 6.1. Limit

Except for Class A devices:

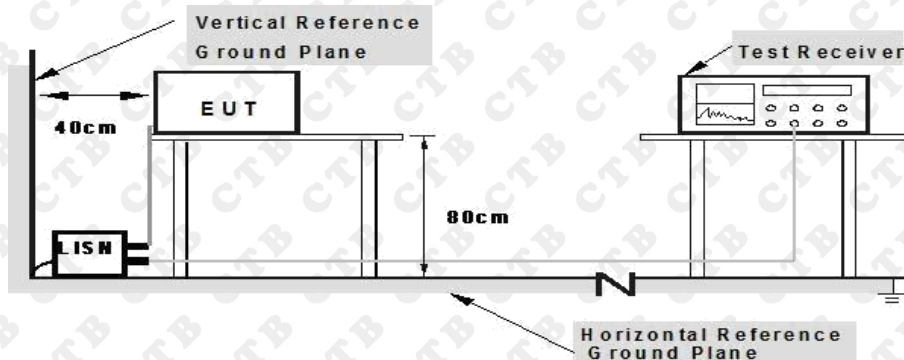
Frequency of emission (MHz)	Conducted limit (dB $\mu$ V)	
	Quasi-peak	Average
0.15-0.5	66 to 56*	56 to 46*
0.5-5	56	46
5-30	60	50

**Note:** Decreases with the logarithm of the frequency.

For Class A devices:

Frequency of emission (MHz)	Conducted limit (dB $\mu$ V)	
	Quasi-peak	Average
0.15-0.5	79	66
0.5-30	73	60

### 6.2. Test setup



**Note:** 1. Support units were connected to second LISN.  
2. Both of LISNs (AMN) are 80 cm from EUT and at least 80 cm from other units and other metal planes

The setup of EUT is according with ANSI C63.4 measurement procedure. Specification used with FCC Part 15 limits.

### 6.3. EMI test receiver setup

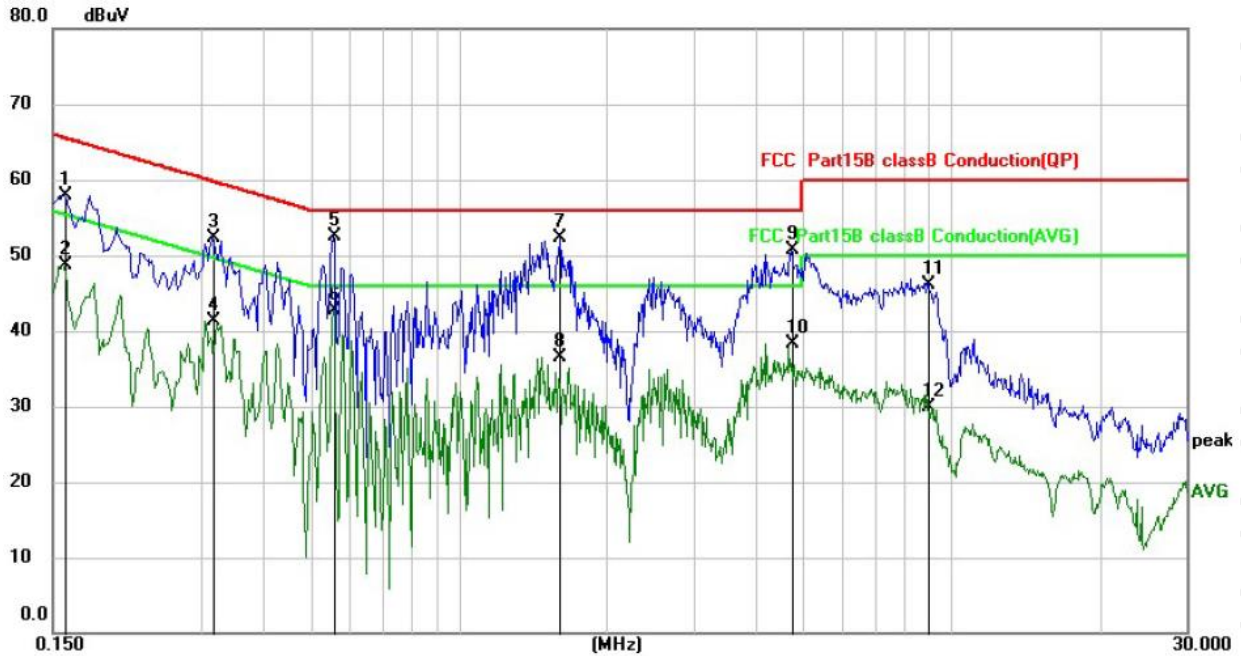
Frequency Range	9kHz-30MHz
Resolution Bandwidth	200Hz (9kHz-150kHz) 9kHz (150kHz-30MHz)

### 6.4. Test procedure

1. Measurement was performed in shielded room, and instruments used were followed clause 4 of ANSI C63.4.
2. Detailed test procedure was following clause 7 of ANSI C63.4.
3. Frequency range 150kHz – 30MHz was checked and EMI receiver measurement bandwidth was set to 9 kHz.

## 6.5. Test results

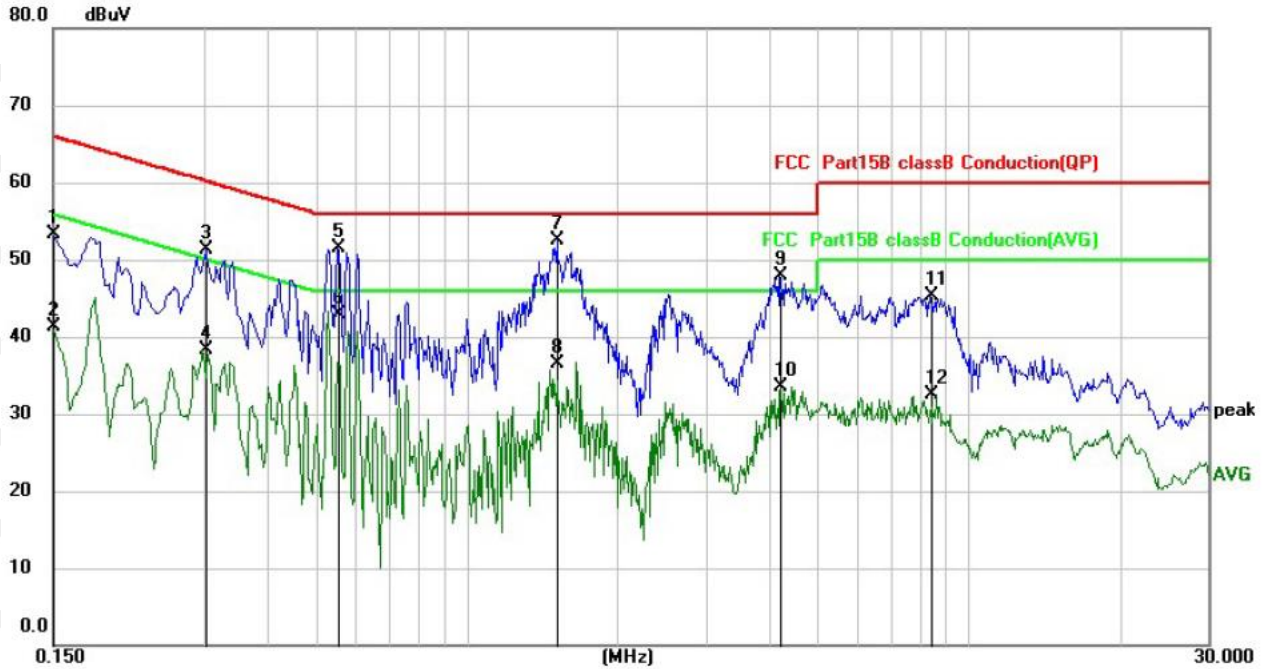
Temperature:	23°C	Relative Humidity:	54 %
Pressure:	101kPa	Phase :	Line
Test Voltage :	AC 120V/60Hz	Test Mode:	Mode 1



No.	Mk.	Freq. MHz	Reading Level dBuV	Correct Factor dB	Measure- ment dBuV	Limit dBuV	Over dB	Detector
1		0.1582	47.94	10.01	57.95	65.56	-7.61	QP
2		0.1582	38.70	10.01	48.71	55.56	-6.85	AVG
3		0.3180	42.32	9.99	52.31	59.76	-7.45	QP
4		0.3180	31.34	9.99	41.33	49.76	-8.43	AVG
5		0.5580	42.54	9.97	52.51	56.00	-3.49	QP
6	*	0.5580	32.81	9.97	42.78	46.00	-3.22	AVG
7		1.6019	42.36	10.01	52.37	56.00	-3.63	QP
8		1.6019	26.46	10.01	36.47	46.00	-9.53	AVG
9		4.7259	40.50	10.16	50.66	56.00	-5.34	QP
10		4.7259	28.07	10.16	38.23	46.00	-7.77	AVG
11		8.9739	35.71	10.31	46.02	60.00	-13.98	QP
12		8.9739	19.60	10.31	29.91	50.00	-20.09	AVG

Note: Result=Reading + Factor  
Over Limit=Result - Limit

Temperature:	23°C	Relative Humidity:	54 %
Pressure:	101kPa	Phase :	Neutral
Test Voltage :	AC 120V/60Hz	Test Mode:	Mode 1



No.	Mk.	Freq. MHz	Reading Level dBuV	Correct Factor dB	Measure- ment dBuV	Limit dBuV	Over dB	Detector
1		0.1500	43.28	10.01	53.29	66.00	-12.71	QP
2		0.1500	31.28	10.01	41.29	56.00	-14.71	AVG
3		0.3019	41.34	9.99	51.33	60.19	-8.86	QP
4		0.3019	28.38	9.99	38.37	50.19	-11.82	AVG
5		0.5540	41.53	9.97	51.50	56.00	-4.50	QP
6	*	0.5540	32.98	9.97	42.95	46.00	-3.05	AVG
7		1.5180	42.42	10.00	52.42	56.00	-3.58	QP
8		1.5180	26.60	10.00	36.60	46.00	-9.40	AVG
9		4.2137	37.68	10.13	47.81	56.00	-8.19	QP
10		4.2137	23.44	10.13	33.57	46.00	-12.43	AVG
11		8.3779	34.99	10.29	45.28	60.00	-14.72	QP
12		8.3779	22.13	10.29	32.42	50.00	-17.58	AVG

Note: Result=Reading + Factor  
Over Limit=Result – Limit

## 7. Radiated emissions

### 7.1. Limit

Except for Class A devices (at 3m):

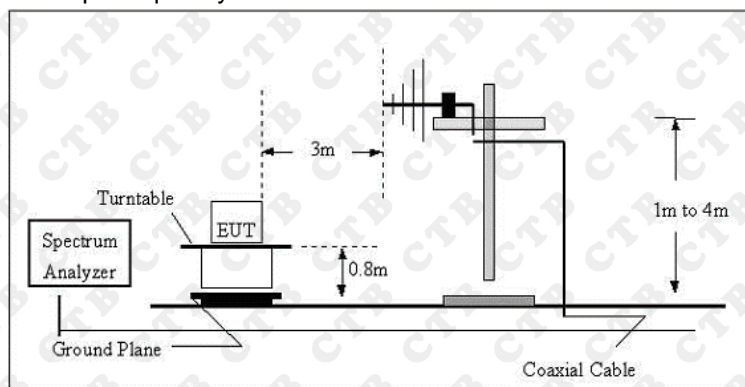
Frequency of emission (MHz)	Field strength (microvolts/meter)	
	(microvolts/meter)	(dB $\mu$ V/m)
30-88	100	40
88-216	150	43.5
216-960	200	46
Above 960	500	54

For Class A devices (at 10m):

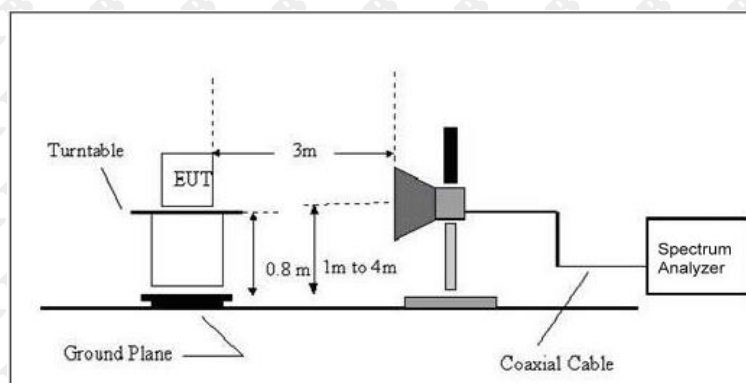
Frequency of emission (MHz)	Field strength (microvolts/meter)	
	(microvolts/meter)	(dB $\mu$ V/m)
30-88	90	39
88-216	150	43.5
216-960	210	46.4
Above 960	300	49.5

### 7.2. Test setup

Radiated Emission Test Set-Up Frequency Below 1 GHz



Radiated Emission Test Set-Up Frequency Above 1GHz



The radiated tests were performed in 3 meter Chamber test site, using the setup accordance with the ANSI C63.4:2014.

### 7.3. EMI test receiver setup and spectrum analyzer setup

During the radiated emission test, the EMI test receiver and Spectrum Analyzer were set with the following configurations:

Frequency Range	RBW	Video B/W	IF B/W	Detector
30MHz-1000MHz	100kHz	300kHz	120kHz	QP
Above 1GHz	1MHz	3MHz	/	PK
	1MHz	10Hz	/	AVG

### 7.4. Test procedure

1. The measurement was performed in a semi-anechoic chamber, and instruments used were followed clause 4 of ANSI C63.4
2. Detailed test procedure was following clause 8 of ANSI C63.4.

### 7.5. Corrected Amplitude & Margin Calculation

1. The Corrected Amplitude is calculated by adding the Antenna Factor and Cable Loss, and subtracting the Amplifier Gain from the Meter Reading. The basic equation is as follows:

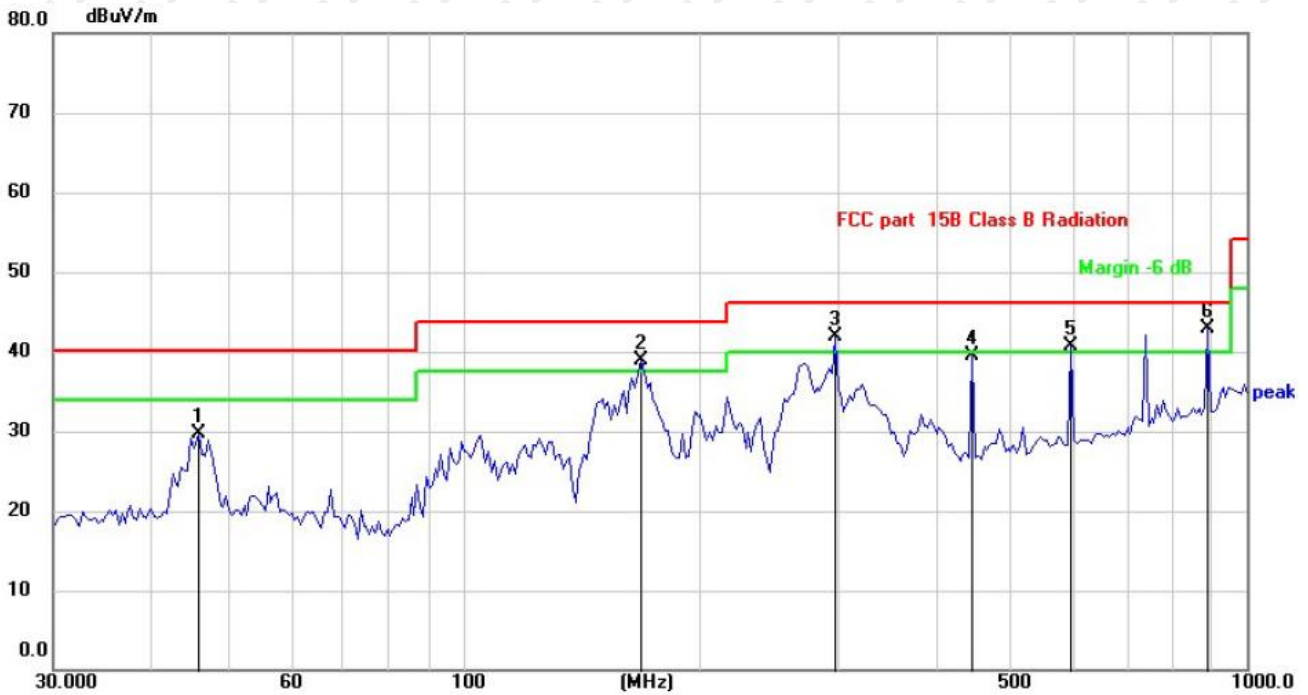
$$\text{Corrected Amplitude} = \text{Meter Reading} + \text{Antenna Factor} + \text{Cable Loss} - \text{Amplifier Gain}$$

2. The “Margin” column of the following data tables indicates the degree of compliance with the applicable limit. For example, a margin of 7dB means the emission is 7dB below the limit. The equation for margin calculation is as follows:

$$\text{Margin} = \text{Limit} - \text{Corrected Amplitude}$$

## 7.6. Test results

Temperature:	23°C	Relative Humidity:	54 %
Pressure:	101kPa	Polarization :	Horizontal
Test Voltage :	AC 120V/60Hz	Test Mode:	Mode 1



No.	Mk.	Freq. MHz	Reading Level dBuV	Correct Factor dB	Measure- ment dBuV/m	Limit dB/m	Over dB	Detector
1		46.0970	36.28	-6.56	29.72	40.00	-10.28	QP
2	!	168.7093	45.48	-6.52	38.96	43.50	-4.54	QP
3	!	298.2681	47.46	-5.55	41.91	46.00	-4.09	QP
4		446.4139	40.97	-1.40	39.57	46.00	-6.43	QP
5	!	596.1770	38.39	2.36	40.75	46.00	-5.25	QP
6	*	892.2907	35.85	6.96	42.81	46.00	-3.19	QP

Note: Result=Reading+Factor  
Over Limit=Result-Limit

Temperature:	23°C	Relative Humidity:	54 %
Pressure:	101kPa	Polarization :	Vertical
Test Voltage :	AC 120V/60Hz	Test Mode:	Mode 1

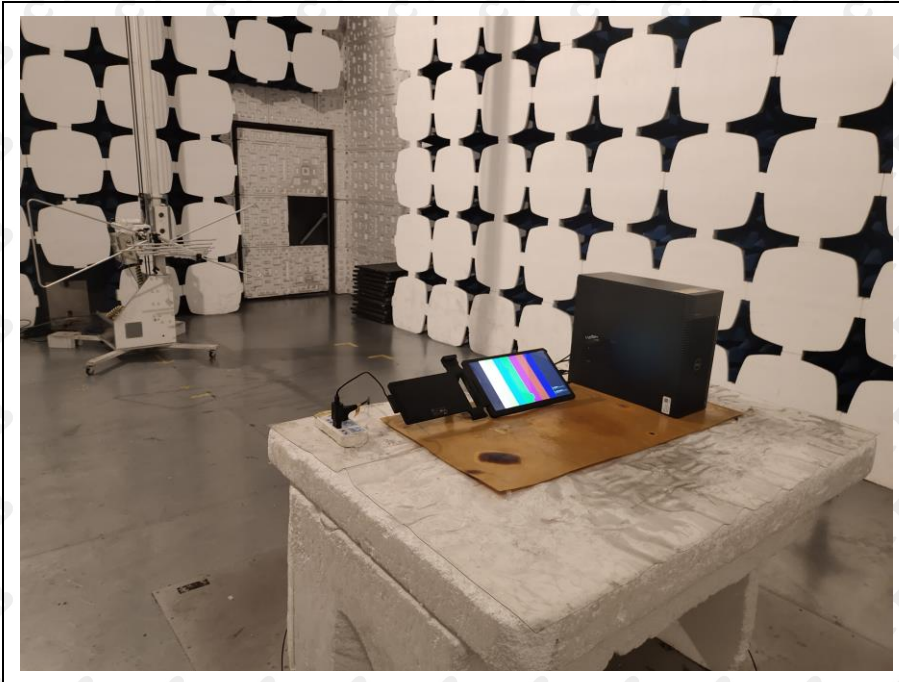


No.	Mk.	Freq. MHz	Reading Level dBuV	Correct Factor dB	Measure- ment dBuV/m	Limit dB/m	Over dB	Detector
1	!	47.3253	41.66	-6.58	35.08	40.00	-4.92	QP
2	!	87.4175	46.20	-10.28	35.92	40.00	-4.08	QP
3	*	171.6930	46.64	-6.88	39.76	43.50	-3.74	QP
4	!	298.2681	47.32	-5.55	41.77	46.00	-4.23	QP
5	!	446.4139	42.17	-1.40	40.77	46.00	-5.23	QP
6	!	596.1770	38.29	2.36	40.65	46.00	-5.35	QP

Note: Result=Reading+Factor  
Over Limit=Result-Limit

## 8. Photographs of test setup

RE



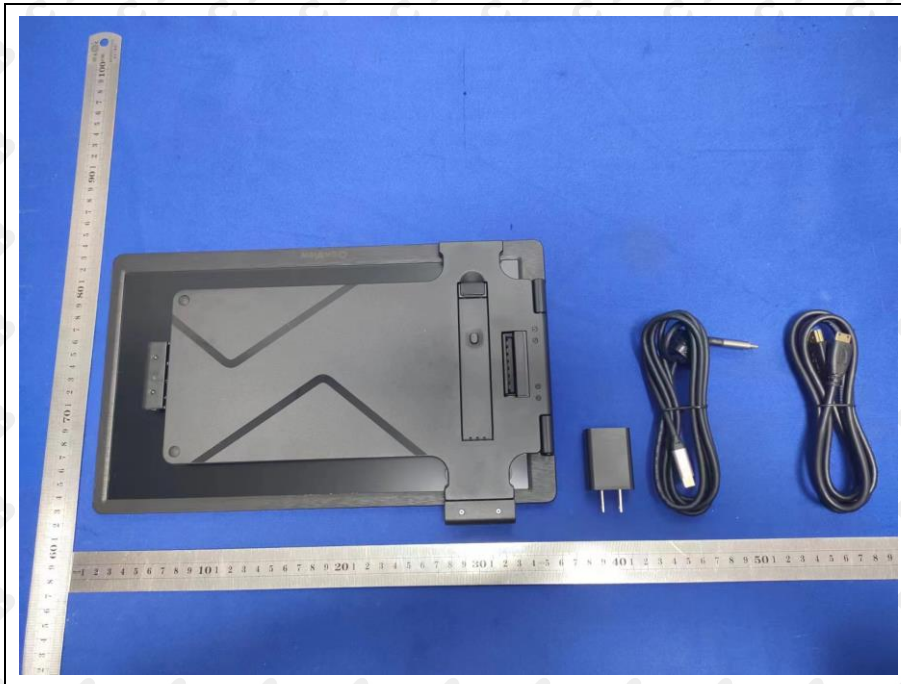
CE



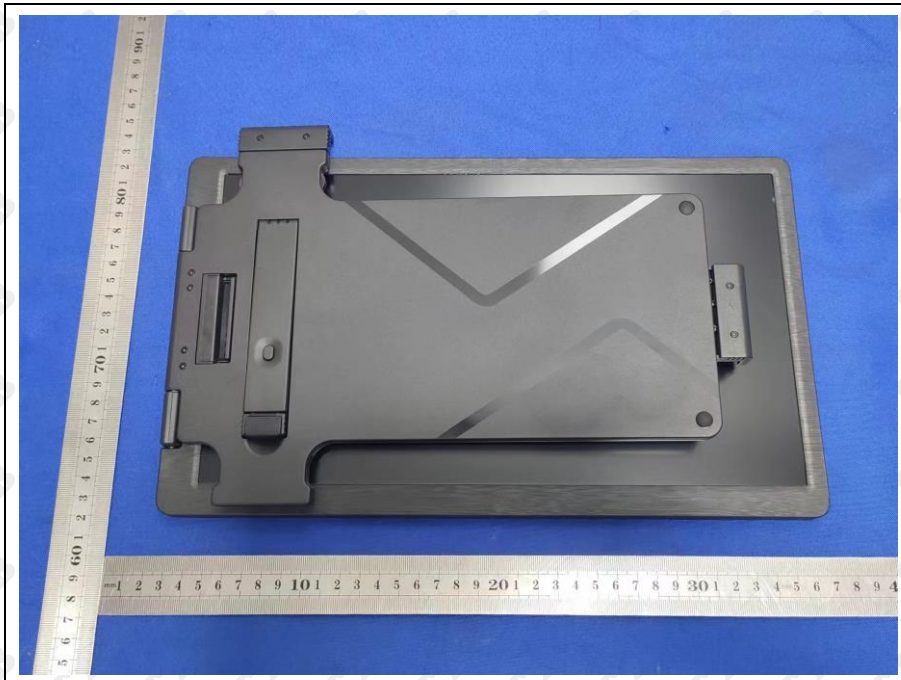


## 9. Photographs of EUT

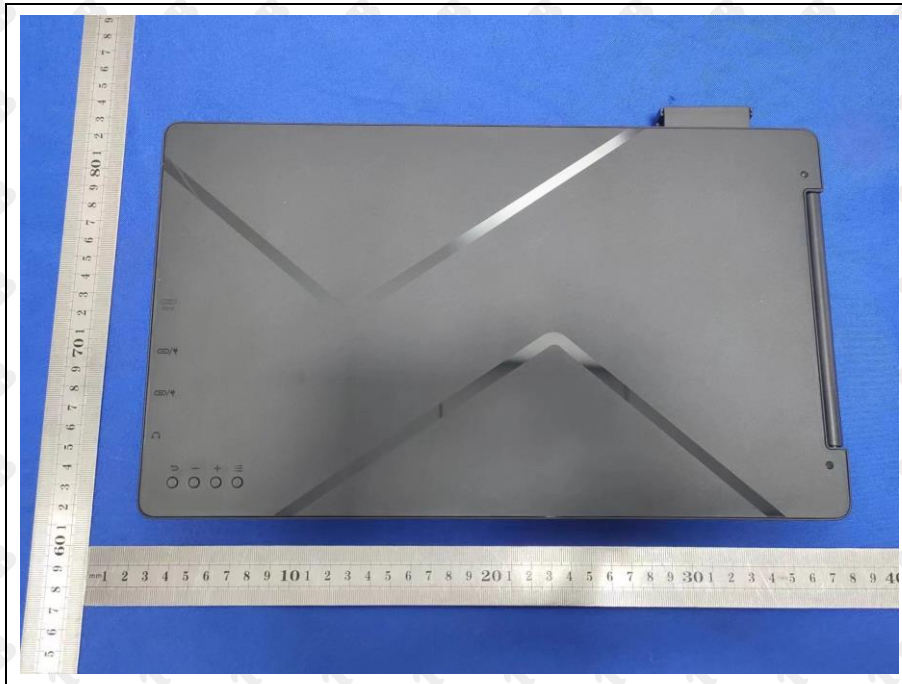
EUT photo 1



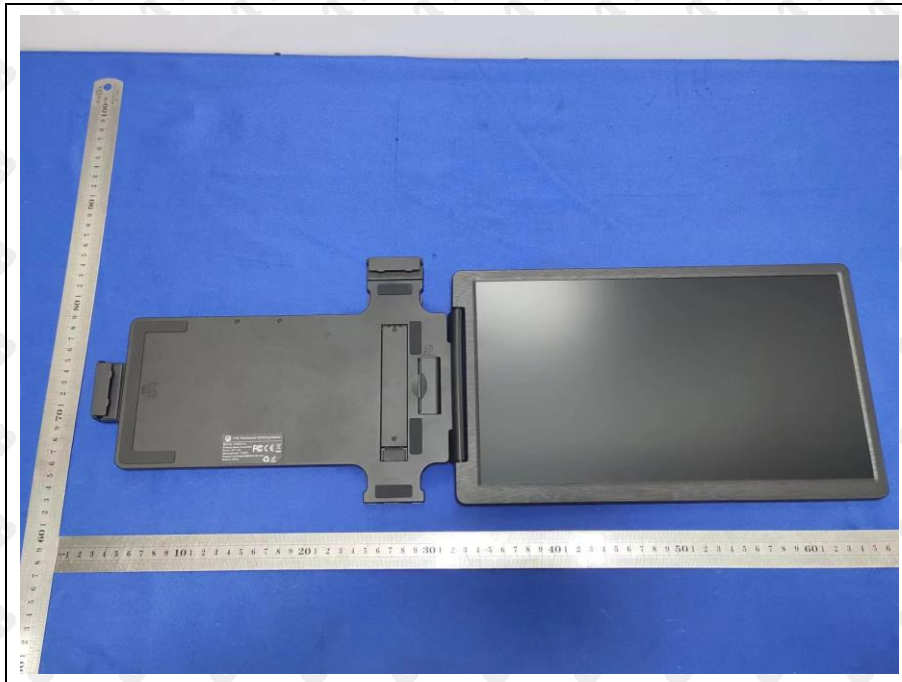
EUT photo 2



EUT photo 3



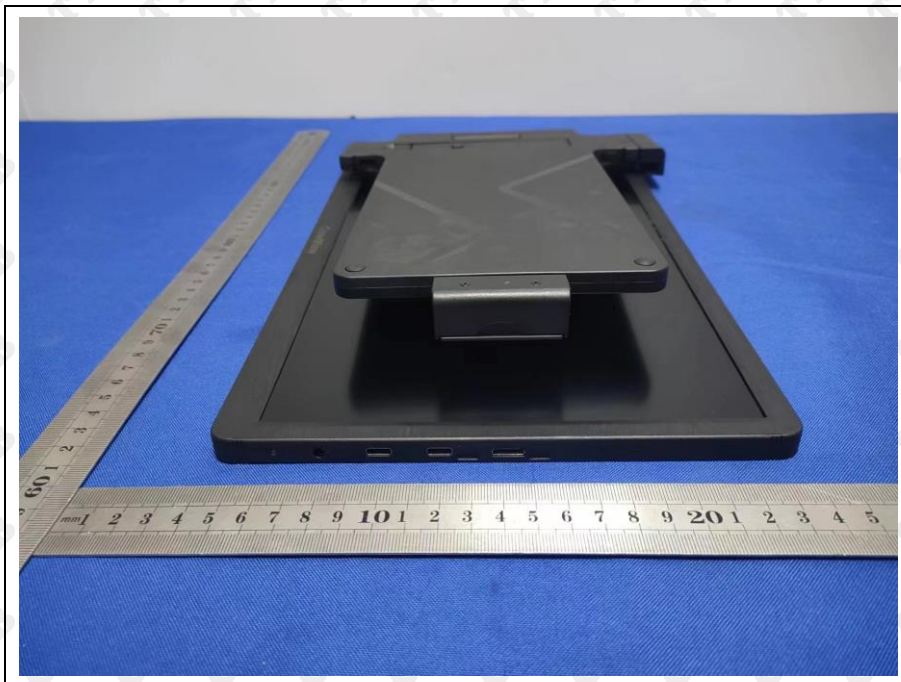
EUT photo 4



EUT photo 5



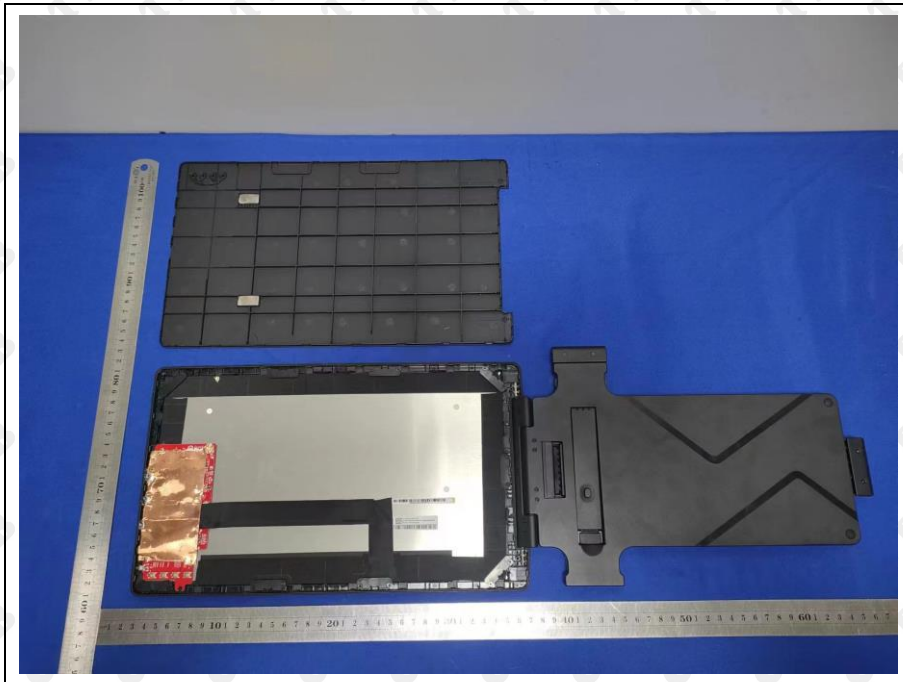
EUT photo 6



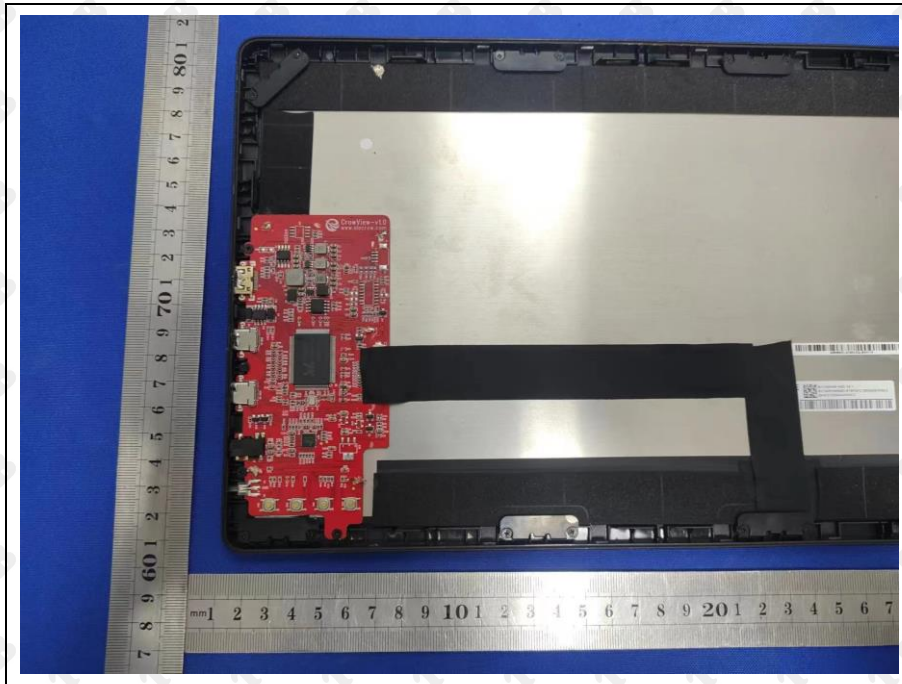
EUT photo 7



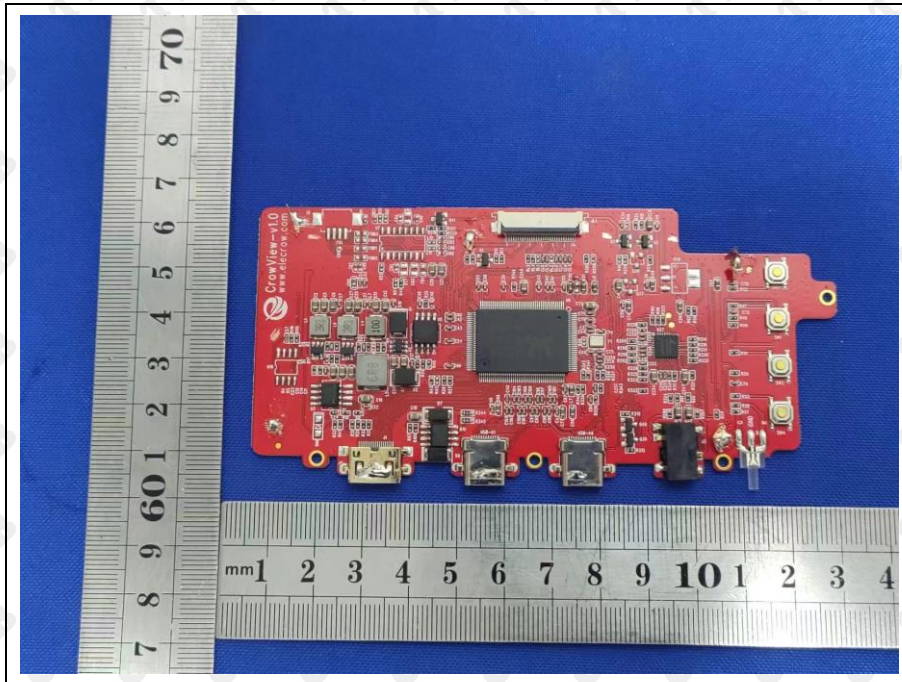
EUT photo 8



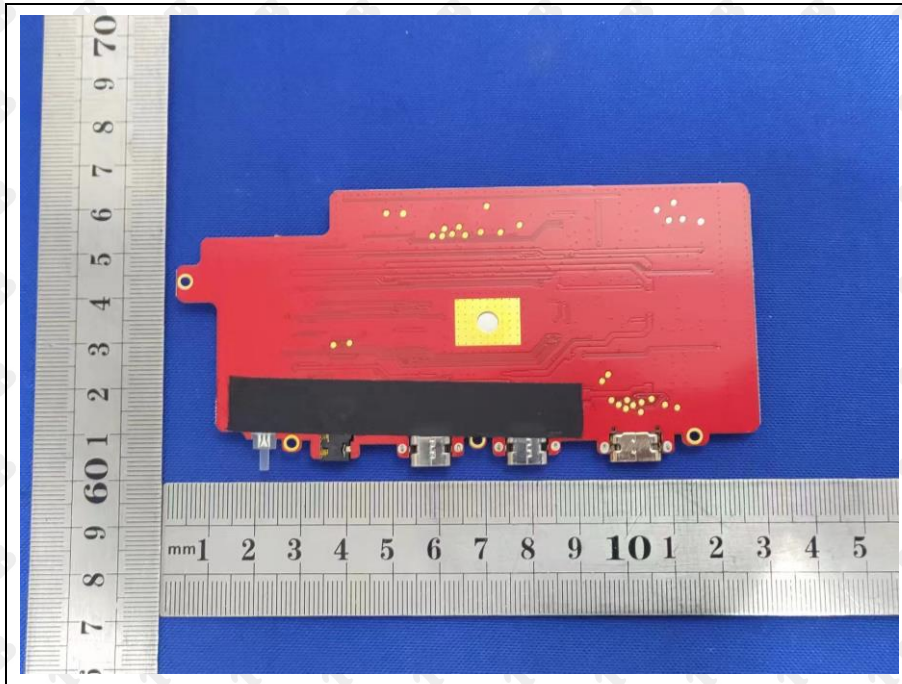
EUT photo 9



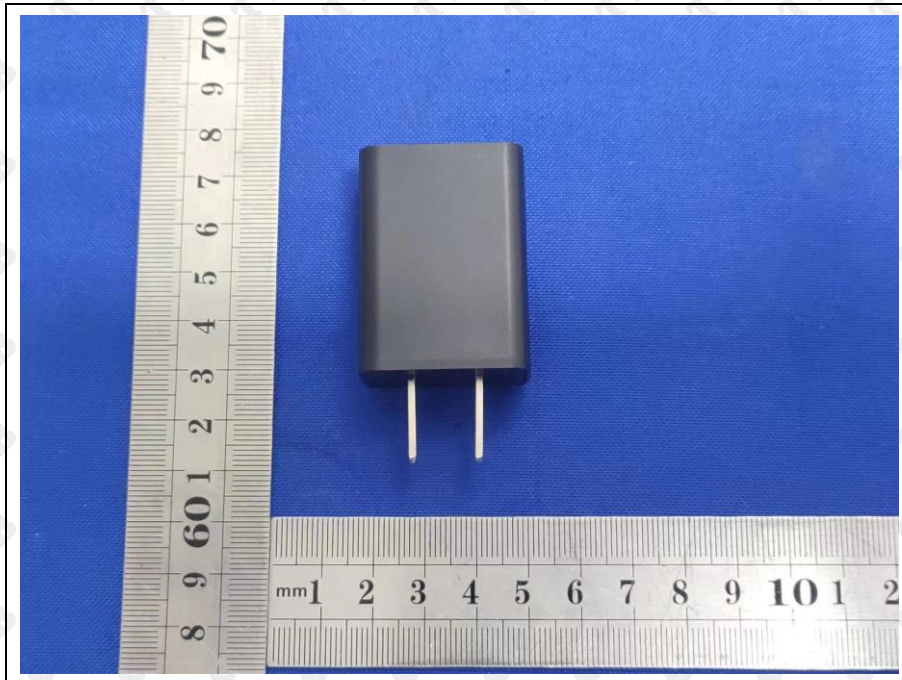
EUT photo 10



EUT photo 11



EUT photo 12



EUT photo 13



\*\*\*End of report\*\*\*