



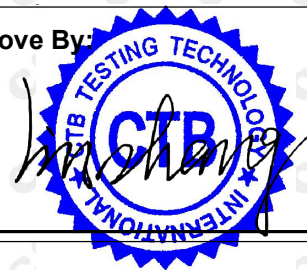
TEST REPORT

Page 1 of 17

REPORT No.: CTB231106018C

Applicant: Shenzhen Elecrow Limited**Address:** Elecrow, 5th Floor, Fengze Building B, Nanchang Huafeng Industrial Park, Hangcheng Street, Hangkong Road, Baoan District, Shenzhen city, China**Manufacturer:** Shenzhen Elecrow Limited**Address:** Elecrow, 5th Floor, Fengze Building B, Nanchang Huafeng Industrial Park, Hangcheng Street, Hangkong Road, Baoan District, Shenzhen city, China**The following samples were submitted and identified on behalf of the clients as:****Sample name:** Crow Vision**Brand:** /**Model(s):** Crow Vision 11.6-inch, Crow Vision 7.0-inch,
Crow Vision 9.0-inch, Crow Vision 10.1-inch**Batch No.:** /**Sample received date:** Nov. 03, 2023**Testing period:** Nov. 03, 2023 to Nov. 09, 2023**Test Method:** Please refer to next page(s).**Test Result:** Please refer to next page(s).**Result Summary :**

Test Requested	Conclusion
IEC 63000:2018-Technical documentation for the assessment of electrical and electronic products with respect to the restriction of hazardous substances	PASS

Tested By:**Check By:****Approve By:**

Date: Nov. 13, 2023

TEST REPORT

Page 2 of 17

REPORT No.: CTB231106018C

Test Method:**A. Screening test by XRF spectroscopy**

XRF screening limits for regulated elements according to IEC 62321-3-1:2013

Element	Screening limit / mg/kg		MDL	
	Polymers and metals	Composite material	Polymers	Other material
Pb	$BL \leq (700-3\sigma) < X < (1300+3\sigma)$ $\leq OL$	$BL \leq (500-3\sigma) < X < (1500+3\sigma)$ $\leq OL$	10mg/kg	50mg/kg
Cd	$BL \leq (70-3\sigma) < X < (130+3\sigma)$ $\leq OL$	$LOD \leq (50-3\sigma) < X < (150+3\sigma)$ $\leq OL$	10mg/kg	50mg/kg
Hg	$BL \leq (700-3\sigma) < X < (1300+3\sigma)$ $\leq OL$	$BL \leq (500-3\sigma) < X < (1500+3\sigma)$ $\leq OL$	10mg/kg	50mg/kg
Cr	$BL \leq (700-3\sigma) < X$	$BL \leq (500-3\sigma) < X$	10mg/kg	50mg/kg
Br	$BL \leq (300-3\sigma) < X$ (non-metal only)	$BL \leq (250-3\sigma) < X$	10mg/kg	50mg/kg

B. Chemical Test

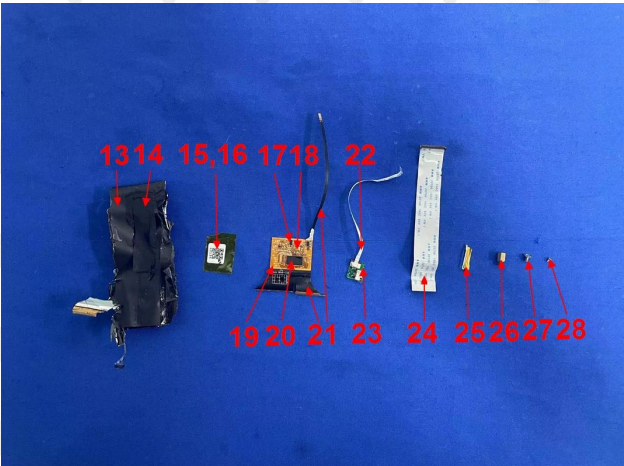
Test Item(s)	Test Method	Analysis Equipment(s)	MDL	Limit
Lead (Pb)	IEC 62321-5:2013	ICP-OES	2 mg/kg	1000mg/kg
Cadmium (Cd)	IEC 62321-5:2013	ICP-OES	2 mg/kg	100mg/kg
Mercury (Hg)	IEC 62321-4:2013+AMD1:2017	ICP-OES	2 mg/kg	1000mg/kg
Hexavalent Chromium Cr(VI)	IEC 62321-7-1:2015	UV-VIS	--	1000mg/kg
	IEC 62321-7-2:2017		8 mg/kg	1000mg/kg
Polybrominated Biphenyls (PBBs)	IEC 62321-6:2015	GC-MS	50mg/kg	1000mg/kg
Polybrominated Diphenyl Ethers (PBDEs)	IEC 62321-6:2015	GC-MS	50mg/kg	1000mg/kg
Phthalate	IEC 62321-8:2017	GC-MS	50mg/kg	1000mg/kg

TEST REPORT

Page 3 of 17

REPORT No.: CTB231106018C

Tested material list

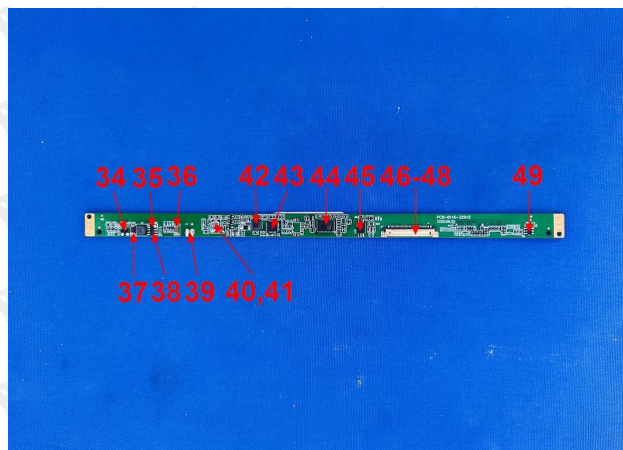
No.	Description	Photo(s) of tested material
1	Black glass	
2	Silver metal sheet	
3	White plastic sheet	
4	Grey glass sheet	
5	Grey plastic sheet	
6	Silver translucent plastic sheet	
7	Silver translucent plastic sheet	
8	White translucent plastic sheet	
9	Transparent plastic sheet	
10	Silver metal frame	
11	Black foam with adhesive	
12	White plastic part	
13	Black soft plastic sheet	
14	Black knitted fabric	
15	Yellow tape	
16	White label	
17	Black body	
18	Crystal oscillator	
19	Yellow PCB	
20	Black body	
21	Black FPC	
22	White FPC	
23	Green PCB	
24	White FPC	
25	Yellow tape	
26	Gold metal part	
27	Silver metal screw	
28	Silver metal screw	

TEST REPORT

Page 4 of 17

REPORT No.: CTB231106018C

29	Solder point
30	White plastic part
31	Black plastic part
32	Silver metal sheet
33	Silver metal pins
34	Black triode
35	Black diode
36	Gray-brown patch capacitor
37	Brown patch capacitor
38	Black body
39	Solder point
40	Silver metal part
41	White plastic base
42	Magnet(100)
43	IC
44	IC
45	IC
46	Gold metal part
47	Black plastic part
48	Silver metal pins
49	Black body

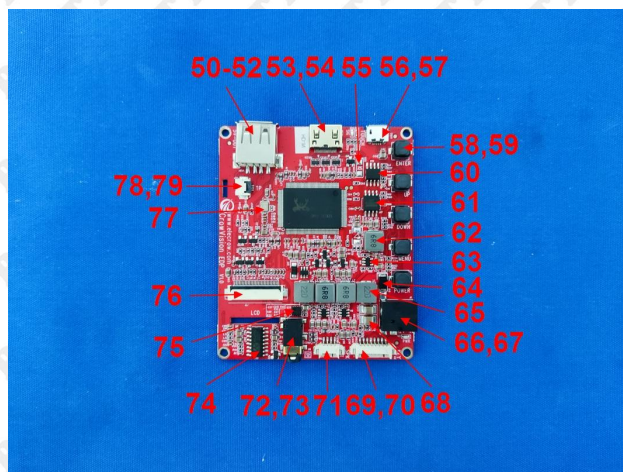


TEST REPORT

Page 5 of 17

REPORT No.: CTB231106018C

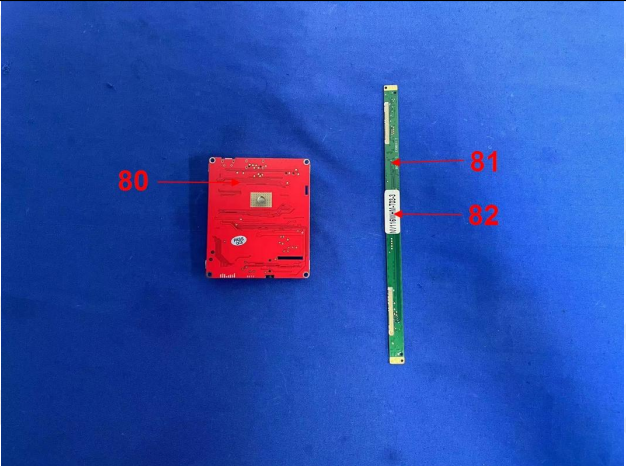

50	Silver metal case (USB charging port)
51	White plastic (USB charging port)
52	Silver metal pins (USB charging port)
53	Silver metal case
54	Black plastic core
55	Solder point
56	Silver metal case (Android charging port)
57	White plastic (Android charging port)
58	Dark grey plastic key
59	Dark grey plastic base
60	IC
61	IC
62	Grey metal body(6R8)
63	IC
64	Black diode
65	Grey metal body(6R8)
66	Black plastic shell
67	Silver metal part
68	Brown patch capacitor
69	White plastic part
70	Silver metal pins
71	White plastic part
72	Black plastic shell
73	Gold metal part
74	IC
75	Black body
76	White plastic part
77	Crystal oscillator
78	White plastic part
79	Black plastic part



TEST REPORT

Page 6 of 17

REPORT No.: CTB231106018C

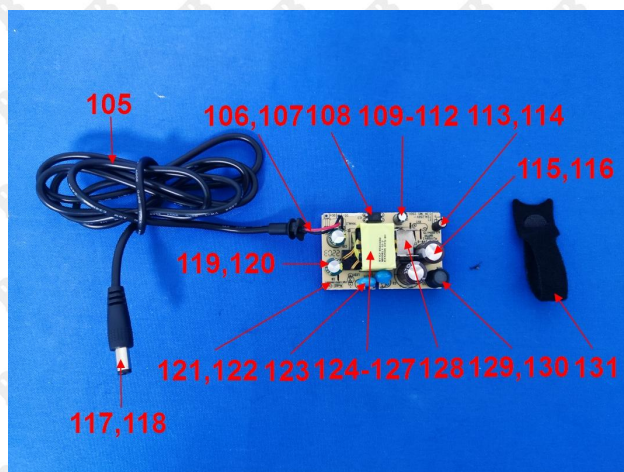
80	Red PCB	
81	Green PCB	
82	White label	
83	Silver metal case (Type- C charging head)	
84	Black plastic (Type- C charging head)	
85	Silver metal case (USB charging port)	
86	White plastic (USB charging port)	
87	Copper colored metal case (Mini trapezoid)	
88	Black plastic (Mini trapezoid)	
89	Black plastic handle(Android charging head)	
90	Copper colored metal case	
91	Black plastic	
92	Black plastic shell	
93	Silver metal plug	
94	Silver aluminum foil	
95	Blue aluminum foil	
96	White plastic inner wire skin	
97	Red plastic inner wire skin	
98	Green plastic inner wire skin	
99	Yellow plastic inner wire skin	
100	Bule plastic inner wire skin	
101	Purple plastic inner wire skin	
102	Brown plastic inner wire skin	
103	Orange plastic inner wire skin	
104	Copper colored metal wire	

TEST REPORT

Page 7 of 17

REPORT No.: CTB231106018C

105	Black plastic outer wire skin
106	Red plastic inner wire skin
107	Black plastic inner wire skin
108	Black body
109	Black plastic film (E-CAP)
110	Silver metal case (E-CAP)
111	Black rubber plug (E-CAP)
112	Silvery metal pins (E-CAP)
113	Black rubber
114	Silver metal part
115	Dark brown plastic film (E-CAP)
116	Silver metal case (E-CAP)
117	Silver metal case
118	Black plastic part
119	Green plastic film (E-CAP)
120	Silver metal case (E-CAP)
121	Pale yellow PCB
122	Solder point(reverse side)
123	Blue ceramic capacitor
124	Yellow tape (transformer)
125	Black plastic part (transformer)
126	Copper metal wire (transformer)
127	Silvery metal pins (transformer)
128	Silvery metal part
129	Dark grey metal part
130	Black rubber
131	Black knit tie



Note: test samples were specified by applicant.

Shenzhen CTB Testing Technology Co., Ltd.

Add: 1&2/F., Building A, No.26, Xinhe Road, Xinqiao, Xinqiao Street, Bao'an District, Shenzhen, Guangdong, China.

Tel: 4008-707-283 Web: <http://www.ctb-lab.net>

Email: ctb@ctb-lab.net

TEST REPORT

Page 8 of 17

REPORT No.: CTB231106018C

Test Result(s):

No.	XRF screening Result					Chemical confirm Result (mg/kg)	Remark	Conclusion
	Pb	Cd	Hg	Cr	Br			
1	BL	BL	BL	BL	BL	---	---	PASS
2	BL	BL	BL	BL	NA	---	---	PASS
3	BL	BL	BL	BL	BL	---	---	PASS
4	BL	BL	BL	BL	BL	---	---	PASS
5	BL	BL	BL	BL	BL	---	---	PASS
6	BL	BL	BL	BL	BL	---	---	PASS
7	BL	BL	BL	BL	BL	---	---	PASS
8	BL	BL	BL	BL	BL	---	---	PASS
9	BL	BL	BL	BL	BL	---	---	PASS
10	BL	BL	BL	BL	NA	---	---	PASS
11	BL	BL	BL	BL	BL	---	---	PASS
12	BL	BL	BL	BL	BL	---	---	PASS
13	BL	BL	BL	BL	BL	---	---	PASS
14	BL	BL	BL	BL	BL	---	---	PASS
15	BL	BL	BL	BL	BL	---	---	PASS
16	BL	BL	BL	BL	BL	---	---	PASS
17	BL	BL	BL	1590	BL	Cr6+: Negative	---	PASS
18	BL	BL	BL	6276	NA	Cr6+: Negative	---	PASS
19	BL	BL	BL	704	BL	Cr6+: Negative	---	PASS
20	BL	BL	BL	2191	BL	Cr6+: Negative	---	PASS
21	BL	BL	BL	BL	BL	---	---	PASS
22	BL	BL	BL	BL	47139	PBB&PBDE:N.D	---	PASS
23	BL	BL	BL	BL	31548	PBB&PBDE:N.D	---	PASS
24	BL	BL	BL	BL	37696	PBB&PBDE:N.D	---	PASS
25	BL	BL	BL	BL	BL	---	---	PASS
26	#6134	BL	BL	BL	NA	---	---	PASS

TEST REPORT

Page 9 of 17

REPORT No.: CTB231106018C

27	BL	BL	BL	BL	NA	---	---	PASS
28	BL	BL	BL	BL	NA	---	---	PASS
29	BL	BL	BL	BL	NA	---	---	PASS
30	BL	BL	BL	BL	5271	PBB&PBDE:N.D	---	PASS
31	BL	BL	BL	BL	BL	---	---	PASS
32	BL	BL	BL	1188	NA	Cr6+: Negative	---	PASS
33	BL	BL	BL	1052	NA	Cr6+: Negative	---	PASS
34	BL	BL	BL	BL	3690	PBB&PBDE:N.D	---	PASS
35	BL	BL	BL	BL	2861	PBB&PBDE:N.D	---	PASS
36	BL	BL	BL	BL	4727	PBB&PBDE:N.D	---	PASS
37	BL	BL	BL	BL	3365	PBB&PBDE:N.D	---	PASS
38	BL	BL	BL	BL	3481	PBB&PBDE:N.D	---	PASS
39	BL	BL	BL	BL	NA	---	---	PASS
40	BL	BL	BL	3839	NA	Cr6+: Negative	---	PASS
41	BL	BL	BL	BL	1539	PBB&PBDE:N.D	---	PASS
42	BL	BL	BL	BL	2592	PBB&PBDE:N.D	---	PASS
43	BL	BL	BL	BL	1594	PBB&PBDE:N.D	---	PASS
44	BL	BL	BL	BL	1370	PBB&PBDE:N.D	---	PASS
45	BL	BL	BL	BL	1717	PBB&PBDE:N.D	---	PASS
46	BL	BL	BL	9901	NA	Cr6+: Negative	---	PASS
47	BL	BL	BL	BL	BL	---	---	PASS
48	BL	BL	BL	8072	NA	Cr6+: Negative	---	PASS
49	BL	BL	BL	BL	BL	---	---	PASS
50	BL	BL	BL	BL	NA	---	---	PASS
51	BL	BL	BL	BL	BL	---	---	PASS
52	BL	BL	BL	BL	NA	---	---	PASS
53	BL	BL	BL	BL	NA	---	---	PASS
54	BL	BL	BL	BL	BL	---	---	PASS
55	BL	BL	BL	BL	NA	---	---	PASS

TEST REPORT

Page 10 of 17

REPORT No.: CTB231106018C

56	BL	BL	BL	BL	NA	---	---	PASS
57	BL	BL	BL	BL	BL	---	---	PASS
58	BL	BL	BL	BL	BL	---	---	PASS
59	BL	BL	BL	BL	BL	---	---	PASS
60	BL	BL	BL	BL	BL	---	---	PASS
61	BL	BL	BL	BL	BL	---	---	PASS
62	BL	BL	BL	15308	NA	Cr6+: Negative	---	PASS
63	BL	BL	BL	BL	BL	---	---	PASS
64	BL	BL	BL	BL	7029	PBB&PBDE:N.D	---	PASS
65	BL	BL	BL	21341	NA	Cr6+: Negative	---	PASS
66	BL	BL	BL	BL	BL	---	---	PASS
67	BL	BL	BL	BL	NA	---	---	PASS
68	BL	BL	BL	BL	BL	---	---	PASS
69	BL	BL	BL	BL	BL	---	---	PASS
70	BL	BL	BL	BL	NA	---	---	PASS
71	BL	BL	BL	BL	BL	---	---	PASS
72	BL	BL	BL	BL	1206	PBB&PBDE:N.D	---	PASS
73	BL	BL	BL	BL	NA	---	---	PASS
74	BL	BL	BL	BL	1754	PBB&PBDE:N.D	---	PASS
75	BL	BL	BL	7079	1437	Cr6+: Negative PBB&PBDE:N.D	---	PASS
76	BL	BL	BL	BL	3078	PBB&PBDE:N.D	---	PASS
77	BL	BL	BL	939	NA	Cr6+: Negative	---	PASS
78	BL	BL	BL	BL	1115	PBB&PBDE:N.D	---	PASS
79	BL	BL	BL	BL	1511	PBB&PBDE:N.D	---	PASS
80	BL	BL	BL	BL	2285	PBB&PBDE:N.D	---	PASS
81	BL	BL	BL	BL	4942	PBB&PBDE:N.D	---	PASS
82	BL	BL	BL	BL	BL	---	---	PASS
83	BL	BL	BL	40353	NA	Cr6+: Negative	---	PASS
84	BL	BL	BL	BL	BL	---	---	PASS

TEST REPORT

Page 11 of 17

REPORT No.: CTB231106018C

85	BL	BL	BL	BL	NA	---	---	PASS
86	BL	BL	BL	BL	658	PBB&PBDE:N.D	---	PASS
87	BL	BL	BL	BL	NA	---	---	PASS
88	BL	BL	BL	BL	BL	---	---	PASS
89	BL	BL	BL	BL	BL	---	---	PASS
90	BL	BL	BL	BL	NA	---	---	PASS
91	BL	BL	BL	BL	BL	---	---	PASS
92	BL	BL	BL	BL	BL	---	---	PASS
93	BL	BL	BL	BL	NA	---	---	PASS
94	BL	BL	BL	BL	NA	---	---	PASS
95	BL	BL	BL	BL	NA	---	---	PASS
96	BL	BL	BL	BL	BL	---	---	PASS
97	BL	BL	BL	BL	BL	---	---	PASS
98	BL	BL	BL	BL	BL	---	---	PASS
99	BL	BL	BL	BL	BL	---	---	PASS
100	BL	BL	BL	BL	BL	---	---	PASS
101	BL	BL	BL	BL	BL	---	---	PASS
102	BL	BL	BL	BL	BL	---	---	PASS
103	BL	BL	BL	BL	BL	---	---	PASS
104	BL	BL	BL	BL	NA	---	---	PASS
105	BL	BL	BL	BL	BL	---	---	PASS
106	BL	BL	BL	BL	BL	---	---	PASS
107	BL	BL	BL	BL	BL	---	---	PASS
108	BL	BL	BL	BL	BL	---	---	PASS
109	BL	BL	BL	BL	BL	---	---	PASS
110	BL	BL	BL	BL	NA	---	---	PASS
111	BL	BL	BL	BL	BL	---	---	PASS
112	BL	BL	BL	BL	NA	---	---	PASS
113	BL	BL	BL	BL	BL	---	---	PASS

TEST REPORT

Page 12 of 17

REPORT No.: CTB231106018C

114	BL	BL	BL	BL	NA	---	---	PASS
115	BL	BL	BL	BL	BL	---	---	PASS
116	BL	BL	BL	BL	NA	---	---	PASS
117	BL	BL	BL	BL	NA	---	---	PASS
118	BL	BL	BL	BL	40069	PBB&PBDE:N.D	---	PASS
119	BL	BL	BL	BL	BL	---	---	PASS
120	BL	BL	BL	BL	NA	---	---	PASS
121	BL	BL	BL	BL	10720	PBB&PBDE:N.D	---	PASS
122	BL	BL	BL	BL	NA	---	---	PASS
123	BL	BL	BL	BL	BL	---	---	PASS
124	BL	BL	BL	BL	BL	---	---	PASS
125	BL	BL	BL	BL	BL	---	---	PASS
126	BL	BL	BL	BL	NA	---	---	PASS
127	BL	BL	BL	BL	NA	---	---	PASS
128	BL	BL	BL	BL	NA	---	---	PASS
129	BL	BL	BL	BL	NA	---	---	PASS
130	BL	BL	BL	BL	18762	PBB&PBDE:N.D	---	PASS
131	BL	BL	BL	BL	BL	---	---	PASS

TEST REPORT

Page 13 of 17

REPORT No.: CTB231106018C

Test Item(s)	Dibutyl Phthalate (DBP) (mg/kg)	Benzylbutyl Phthalate (BBP) (mg/kg)	Bis-(2-ethylhexyl) Phthalate (DEHP) (mg/kg)	Diisobutyl phthalate (DIBP) (mg/kg)	Conclusion
CAS No.	84-74-2	85-68-7	117-81-7	84-69-5	
Limit	1000	1000	1000	1000	
No.	Result (mg/kg)				
11	N.D	N.D	N.D	N.D	
14+31	N.D	N.D	N.D	N.D	PASS
15+25+124	N.D	N.D	N.D	N.D	PASS
16+82	N.D	N.D	N.D	N.D	PASS
89+105	N.D	N.D	N.D	N.D	PASS
96+97+98	N.D	N.D	N.D	N.D	PASS
99+100+101	N.D	N.D	N.D	N.D	PASS
102+103	N.D	N.D	N.D	N.D	PASS
106+107	N.D	N.D	N.D	N.D	PASS
113+130	N.D	N.D	N.D	N.D	PASS
86	N.D	N.D	N.D	N.D	PASS
118	N.D	N.D	N.D	N.D	PASS
1	N.D	N.D	N.D	N.D	PASS
3+4+5	N.D	N.D	N.D	N.D	PASS
6+7+8	N.D	N.D	N.D	N.D	PASS
9+12+13	N.D	N.D	N.D	N.D	PASS
17+19+20	N.D	N.D	N.D	N.D	PASS
21+22+24	N.D	N.D	N.D	N.D	PASS
23+30+31	N.D	N.D	N.D	N.D	PASS
34+35+38	N.D	N.D	N.D	N.D	PASS
36+37+42	N.D	N.D	N.D	N.D	PASS
41+44+43	N.D	N.D	N.D	N.D	PASS
45+47+49	N.D	N.D	N.D	N.D	PASS
51+54+57	N.D	N.D	N.D	N.D	PASS
58+59+66	N.D	N.D	N.D	N.D	PASS
60+61+62	N.D	N.D	N.D	N.D	PASS
63+64+65	N.D	N.D	N.D	N.D	PASS

TEST REPORT

Page 14 of 17

REPORT No.: CTB231106018C

68+69+71	N.D	N.D	N.D	N.D	PASS
72+74+75	N.D	N.D	N.D	N.D	PASS
76+78+79	N.D	N.D	N.D	N.D	PASS
80+81+84	N.D	N.D	N.D	N.D	PASS
88+91+92	N.D	N.D	N.D	N.D	PASS
108+121+123	N.D	N.D	N.D	N.D	PASS
109+111+115	N.D	N.D	N.D	N.D	PASS
119+124	N.D	N.D	N.D	N.D	PASS
125+129	N.D	N.D	N.D	N.D	PASS
131	N.D	N.D	N.D	N.D	PASS

Remark:

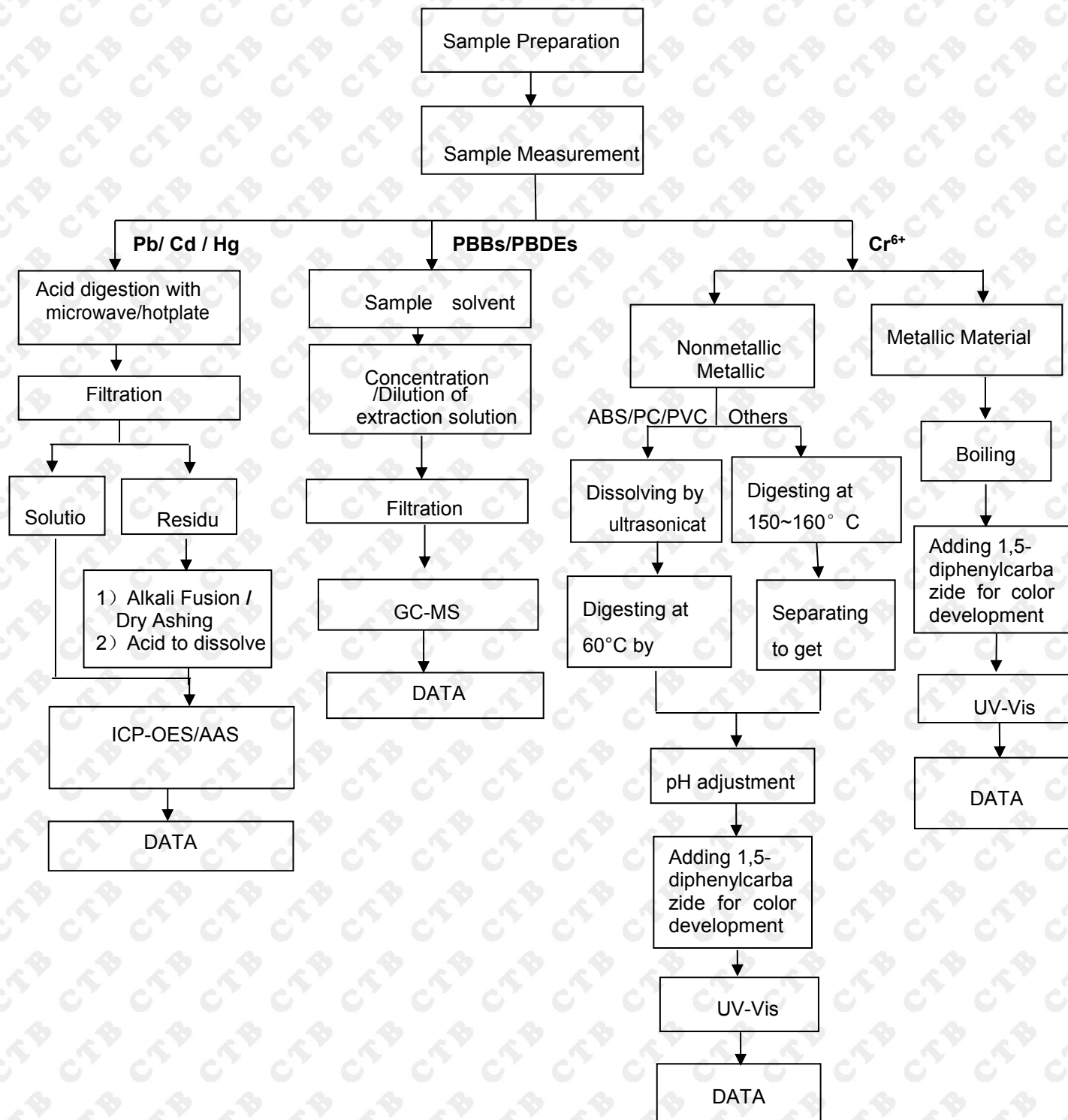
1. BL = below the limit
2. OL = over the limit
3. X = inconclusive, chemical confirm test is needed
4. NA = metal not applicable
5. mg/kg = milligram per kilogram = ppm
6. N.D = not detected
7. Negative = Absence of Cr(VI), the detected Cr(VI) concentration in the boiling water extraction solution is less than $0.1\mu\text{g}/\text{cm}^2$ with 50cm^2 sample surface area used.
8. Positive = Presence of Cr(VI), the detected Cr(VI) concentration in the boiling water extraction solution is equal to or greater than $0.13\mu\text{g}/\text{cm}^2$ with 50cm^2
9. sample surface area used. The limit for composite test should be divided by the mixed number.

Note:

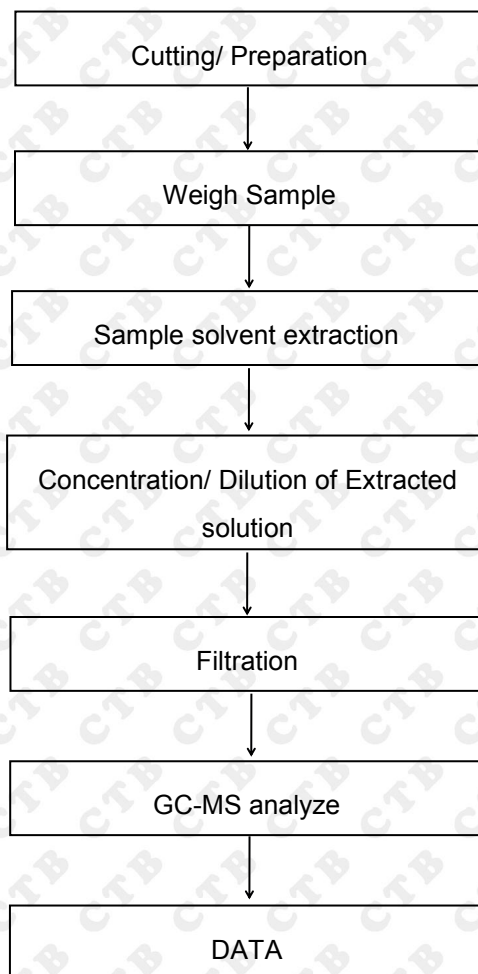
1. When perform screening tests, it is the result on total Br while test item on restricted substances is PBBs/PBDEs, it is the result on total Cr while test item on restricted substances is Cr^{6+} .
2. Pb, Cd, Hg, Cr and Br results are obtained by EDXRF for primary screening, and further chemical testing by ICP-OES (for Cd, Pb, Hg), UV-VIS (for Cr^{6+}) and GC-MS (for PBBs, PBDEs) is needed to be performed, if the concentration falls into the inconclusive area according to IEC 62321-3-1:2013.
3. For the XRF screening test for RoHS elements, the reading may be different to the actual content in the sample be of non-uniformity composition.
4. # the lead content of tested component exceeded 1000ppm, but less than 40000ppm, it can comply with the RoHS directive, as it is exempted to contain lead with up to 40000ppm according to item 6(c) of annex III of 2011/65/EU, as per applicant's declaration.

Test flow chart

1.Pb/Cd/Hg/Cr⁶⁺/PBBs/PBDEs



2. Phthalate test flow chart



TEST REPORT

Page 17 of 17

REPORT No.: CTB231106018C

Photo documentation



*** End of Report ***

Note: If there is any objection to the inspection results in this report, please submit a written report to the company within 15 days from the date of receiving the report. The test report is effective only with both signature and specialized stamp. This result(s) shown in this report refer only to the sample(s) tested. Without written approval of Shenzhen CTB Testing Technology Co., Ltd. this report can't be reproduced except in full. The tested sample(s) and the sample information are provided by the client. "★" indicates the testing items were fulfilled by subcontracted lab. "※" indicates the items are not in CNAS accreditation scope.