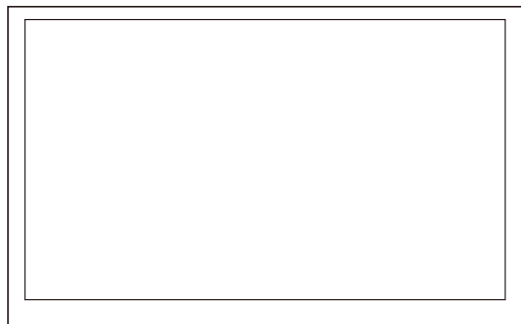


ELECROW 10.1 Inch HDMI Touchscreen Monitor



USER MANUAL

Customer Support:

Should there be any questions, please feel free to let us know and contact us with your purchase order number at info@elecrown.com.

! IMPORTANT SAFETY WARNING!

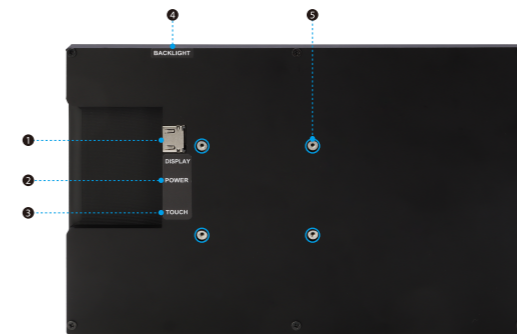
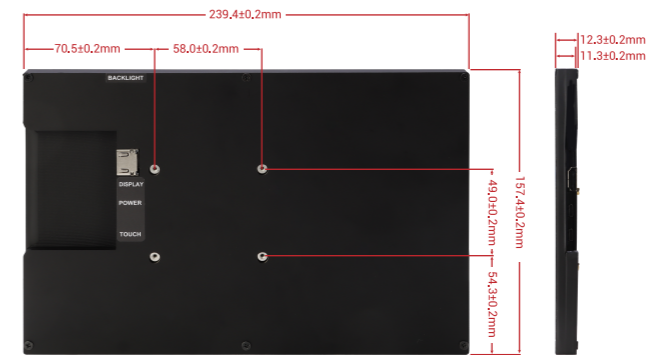
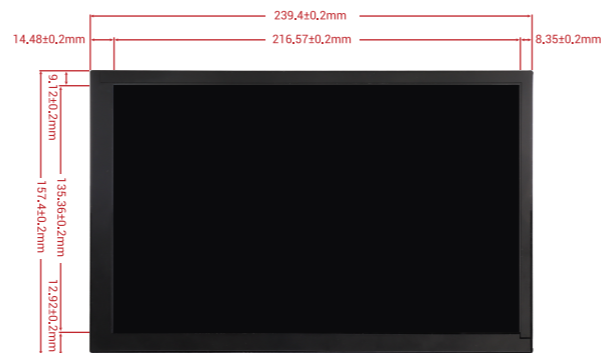
- This appliance can be used by children aged from 8 years and above and persons with reduced physical, sensory or mental capabilities or lack of experience and knowledge if they have been given supervision or instruction concerning use of the appliance in a safe way and understand the hazards involved.
- Children shall not play with the appliance.
- Cleaning and user maintenance shall not be made by children without supervision.
- **WARNING:** Use the detachable supply unit provided with this appliance only.

Chapter 01 Before Using the Product

1-1. Package Contents

- 1 x 10.1 Inch Monitor
- 1 x HDMI to HDMI Cable
- 1 x HDMI to Micro HDMI Connector
- 2 x USB A to Micro USB Cable
- 2 x Pro Stand
- 1 x Screw Driver
- 4 x Small Copper Pillars (to support RPI)
- 4 x M2.5 Screws (to mount RPI)

1-2. Product Description



- 1 Display interface:** Use HDMI cable to connect with signal source equipment, and the maximum supported resolution is 1080p.
- 2 Power interface:** Using micro USB cable and power connection, this interface is only used for power supply.
- 3 Touch interface:** Micro USB cable is used to connect with the signal source device. This interface is used for touch and power supply.
- 4 Side key:** It is used to adjust the brightness. Press once to increase the brightness by 10%. After reaching 100%, press once again to return to 10%; Press and hold for 3 seconds to turn off the backlight, and then press again to restore the original brightness.
- 5 Copper pillar:** Used to fix raspberry pie.

Chapter 02 Connecting and Using a Source Device

2-1. Connected to Raspberry Pi

2-1-1. How to Use with Raspbian /Ubuntu Mate /Retropie/Kali System

Step 1. Download the Official image

- Download **Raspbian** Official Image
Download URL: <https://www.raspberrypi.org/downloads/raspbian/>
Username: pi Password: raspberry

- Download **Ubuntu Mate** Official Image
Download URL: <https://ubuntu-mate.org/download/>
The user name and password can be set by yourself after startup

- Download **Kali** Official Image
Download URL: <https://www.offensive-security.com/kali-linux-arm-images/>
Username: kali (The old version is root) Password: kali (The old version istoor)

- Download **Retropie** Official Image
Download URL: <https://retropie.org.uk/download/>
Username: pi Password: raspberry

Step 2. Burn Official Image

- Download and install tool software (If they are already installed, this step can be ignored)
SD card for mat software **SDCard Formatter** download URL : https://www.sdcard.org/downloads/formatter_4/



- Image burning software **win32diskimager** download URL: <https://sourceforge.net/projects/win32diskimager/>

• Format SD Card

Insert the SD card into the card reader → Insert the card reader into the computer → Open the SDCard Formatter software → Select SD card → Select quick format (generally select quick format, other options can be selected according to your own needs) → Click the Format button → Select "Yes" → Click OK after formatting.

• Burn Image

Open the win32diskimager software → Select the image file to be burned (xxx.img) → Select SD card → Click the "write" button → Select "Yes" → Wait for the burning to complete (the whole process lasts about 10 minutes)

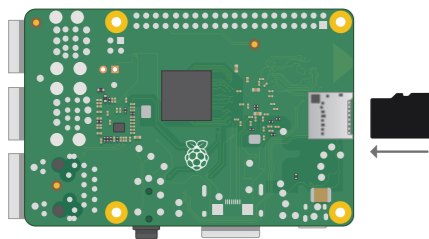
Step 3. Modify the "config.txt" configuration file

Open the "config.txt" file in the root directory of SD card on the computer, add the following at the end of the file, save and exit.

```
max_usb_current=1
hdmi_force_hotplug=1
config_hdmi_boost=7
hdmi_group=2
hdmi_mode=87
hdmi_drive=1
display_rotate=0
hdmi_cvt 1280 800 60 6 0 0 0
```

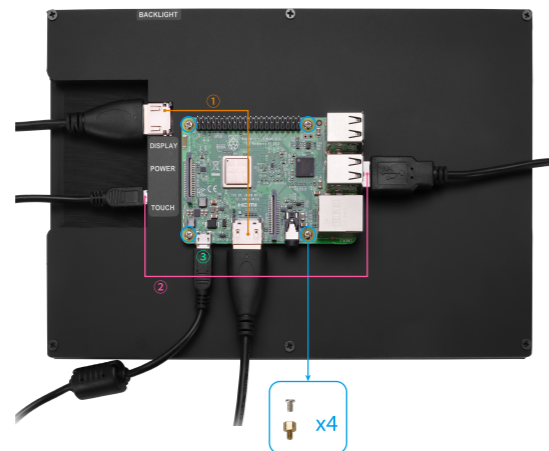
When working with Raspberry Pi 4, for the system image of Raspberry Pi after 2021-10-30, for example on Bullseye, please modify "dtoverlay = vc4-kms-v3d" to "dtoverlay = vc4-fkms-v3d" in the config file, otherwise it may fail to start. But on Buster, please comment out "dtoverlay = vc4-fkms-V3D" by adding #.

Step 4. Insert the SD Card into the Slot on the Back of the Raspberry Pi Motherboard.

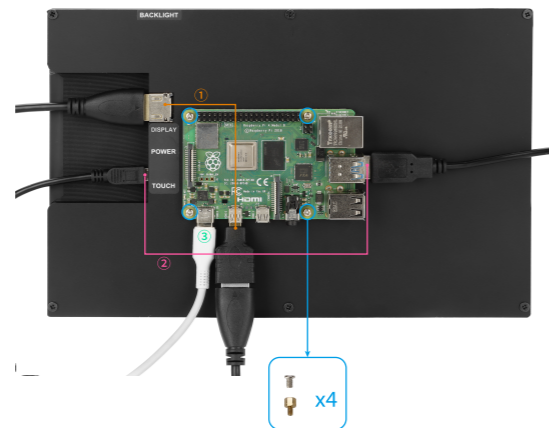


2-1-2. Connect the Monitor to Raspberry Pi and Power the Raspberry Pi

• Monitor Connected to Raspberry Pi 3B

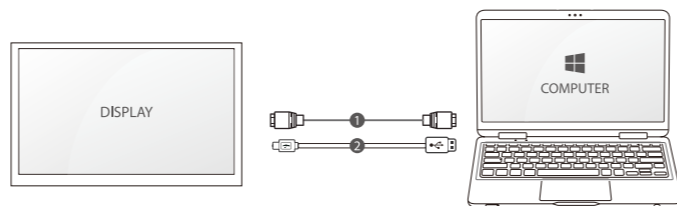


• Monitor Connected to Raspberry Pi 4B



Note: 1.The Raspberry Pi cannot be powered on directly by powering the screen (neither 5V/2A nor 5V/3A).
2. Please connect the cables then power the Raspberry Pi. And use the full 2A for power supply with Raspberry Pi 3B+, 3B, 2B, B+, B+, A, full 3A for Raspberry Pi 4B.

2-2. Connected to Windows PC/Laptop (with HDMI Port)



- 1 HDMI(Display) to HDMI cable
- 2 Micro USB(touch port) to USB A

Note: Please note that when the monitor is connected to a game device or the monitor's touch end is connected to a power source, socket, or other power supply device, the touchscreen doesn't work.

Chapter 03 Troubleshooting Guide and Warranty

3-1. Troubleshooting Guide

This page deals with problems that can be corrected by a user. If the problem still persists after you have tried these solutions, please contact customer support.

Problems	Possible Solutions
Failure in writing system	Rewrite system and if problem still exists after rewriting then you SD card format might be wrong or SD card is defective.
SD card format error or SD card is defective	Wrong SD card format: Run SDFormatter.exe and format your card. Choose SD card in your computer and right click--choose property--make sure your SD card format is FAT32. If SD card is defective please change it to a new and functional one.

The monitor displays black or white screen or no full screen or showing white line	Make sure your image system is intact. Modify the configuration file config.txt.
The monitor flickers	Ensure sufficient power. Make sure the screen micro USB and Raspberry Pi USB connection is stable and try using another USB cable.
Touch Screen Issue	Make sure the Micro USB connector is properly connected between the USB ports of the Raspberry Pi and the USB Touch interface of the LCD screen. Try another micro USB cable (supports data transfer).
The LCD cannot display normally when connected to PC	Adjust the output signal to HDMI. Make sure the operating system is Windows. Use the LCD as the only monitor for testing. Connect the USB power cable first and then the HDMI cable. Try to restart your computer.

3-2. Warranty

ELECROW Monitors carry a one (1) year limited warranty from the purchase date. In order to receive warranty service, proof of purchase of the ELECROW product is required. To obtain warranty service, please contact Customer Support.

This limited warranty does not cover for:

Improper installation or maintenance; Misuse or Neglect; Repair, modification, or installation of options or parts by you or any third party; Improper environment- Excessive or inadequate heating or air conditioning or electrical powers failures, surges or other irregularities; Fire, flood, earthquake or other accidents.

3-3. Customer Support

If you have any questions, customer support is always stand by.

- info@elecrow.com
- @elecrow.openhardware
- @Elecrow1

Chapter 04 Specifications

Screen Type	IPS screen
Screen Size	10.1 inch
Resolution	1280 x 800
Backlight adjustment	Key Switch Adjustment
Touch Screen Type	Capacitive Touch Screen
Touch IC	SIS9200
Power	Micro USB (5V)
Module overall power	5.2942W (100% brightness)
Video Input Interface	HDMI(up to 1080p)
Active Area	216.566*135.36 (mm)
Module Size (L x W x H)	239.4*157.4*12.3 ±0.2 (mm)



Information on the disposal for Waste Electrical & Electronic Equipment(WEEE). This symbol on the products and accompanying documents means that used electrical and electronic products should not be mixed with general household waste. For proper disposal for treatment, recovery and recycling, please take these products to designated collection points where they will be accepted on a free of charge basis. In some countries you may be able to return your products to your local retailer upon the purchase of a new product. Disposing of this product correctly will help you save valuable resources and prevent any possible effects on human health and the environment, which could otherwise arise from inappropriate wastehandling. Please contact your local authority for further details of your nearest collection point for WEEE.