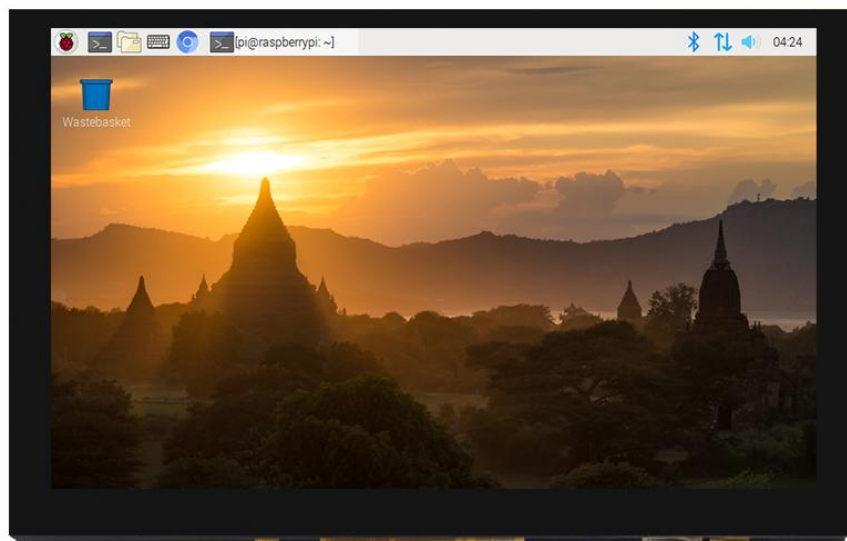


DLH05050B

LCD Product manual



To ensure safe use of this product, please read this manual
carefully

Contents

1. Summary description	3
1.1 . Feature description.....	3
1.2 . Product image.....	5
2. Parameter	6
2.1 . LCD Parameter.....	6
2.2 . Other Parameter.....	6
3. Size chart	7
3.1 . Size chart.....	7
4. Interface and switch	8
4.1 . Interface description.....	8
5. Connect and use	9
5.1 . Connect PC/Laptop	9
5.2 . Connect Raspberry Pi	9
5.3 . Connect Jetson Nan.....	10

1. Summary description

1.1. Feature description

Own shell

- Hard iron shell

5inch IPS full Angle display

- The viewing Angle is large

- true color

- Dynamic picture quality is excellent

1024X600 Resolution

- HD Vision

- Display is very delicate

- Software settings, resolution can be increased to 1920X1080

Multifunctional leave Switch

- Support brightness and volume adjustment

- Support menu settings

Support multiple device access

- Can connect to mainstream development boards such as Raspberry Pi, Banana Pi, BB

Black, etc

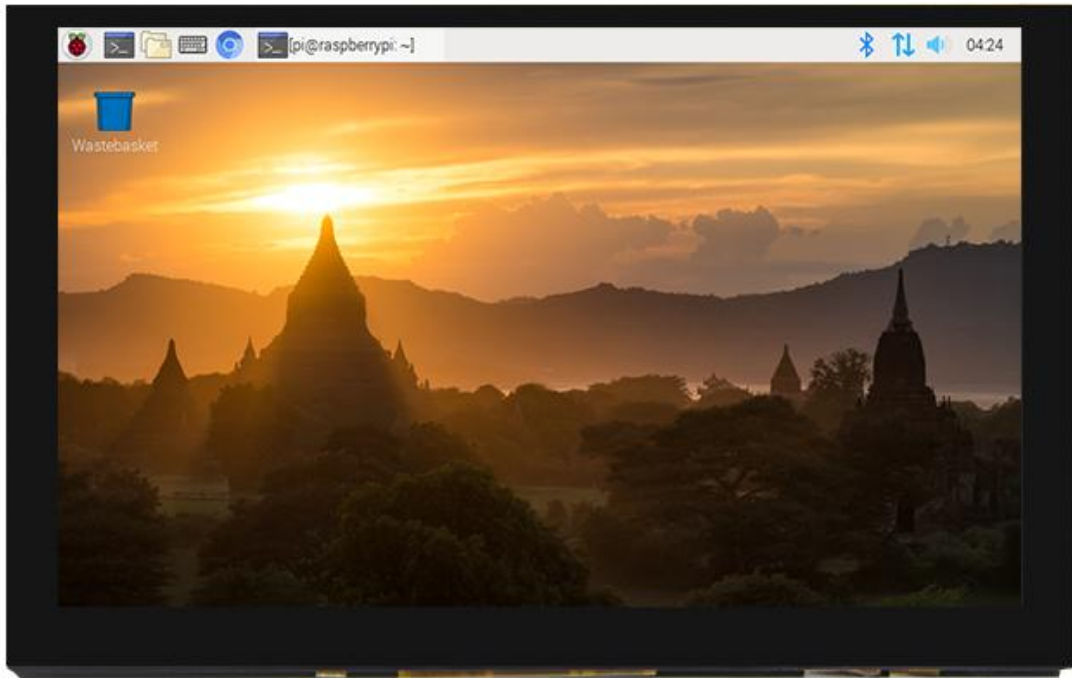
- Can connect to mainstream TV boxes and digital cameras (display only)

Supports multiple system displays

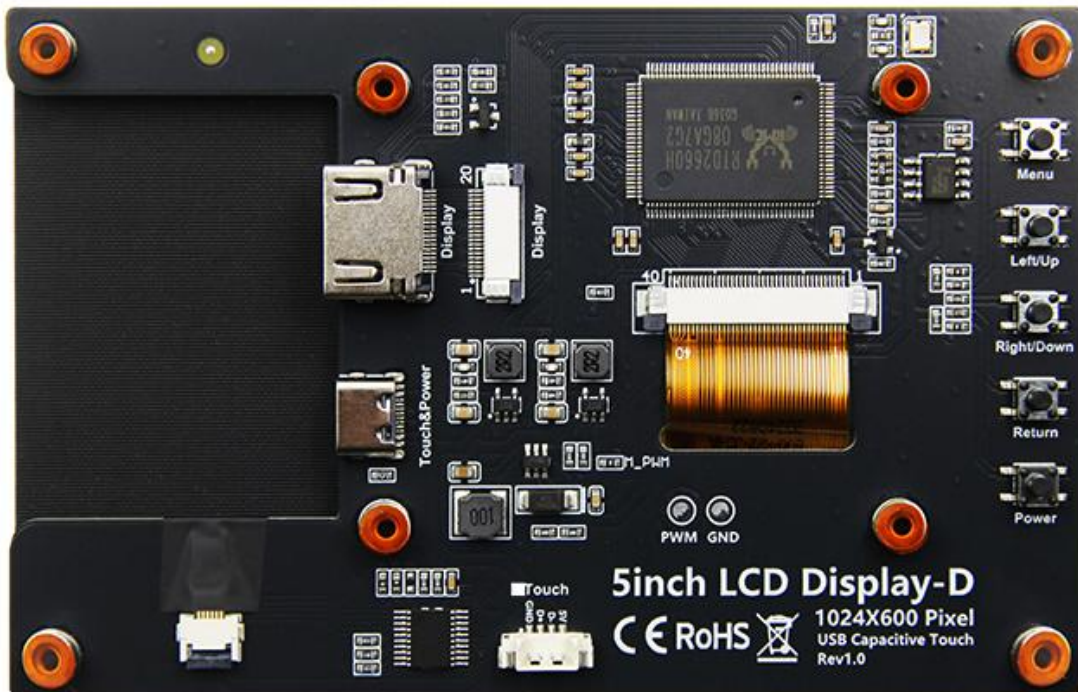
- Support systems such as Raspbian, Kali Linux, Ubuntu, Kodi, Win10 IOT, and touch free drive

- Support Win7/8/10/11 and other systems, touch free drive

1.2. Product image



TOP



Bottom

2. Parameter

2.1. LCD Parameter

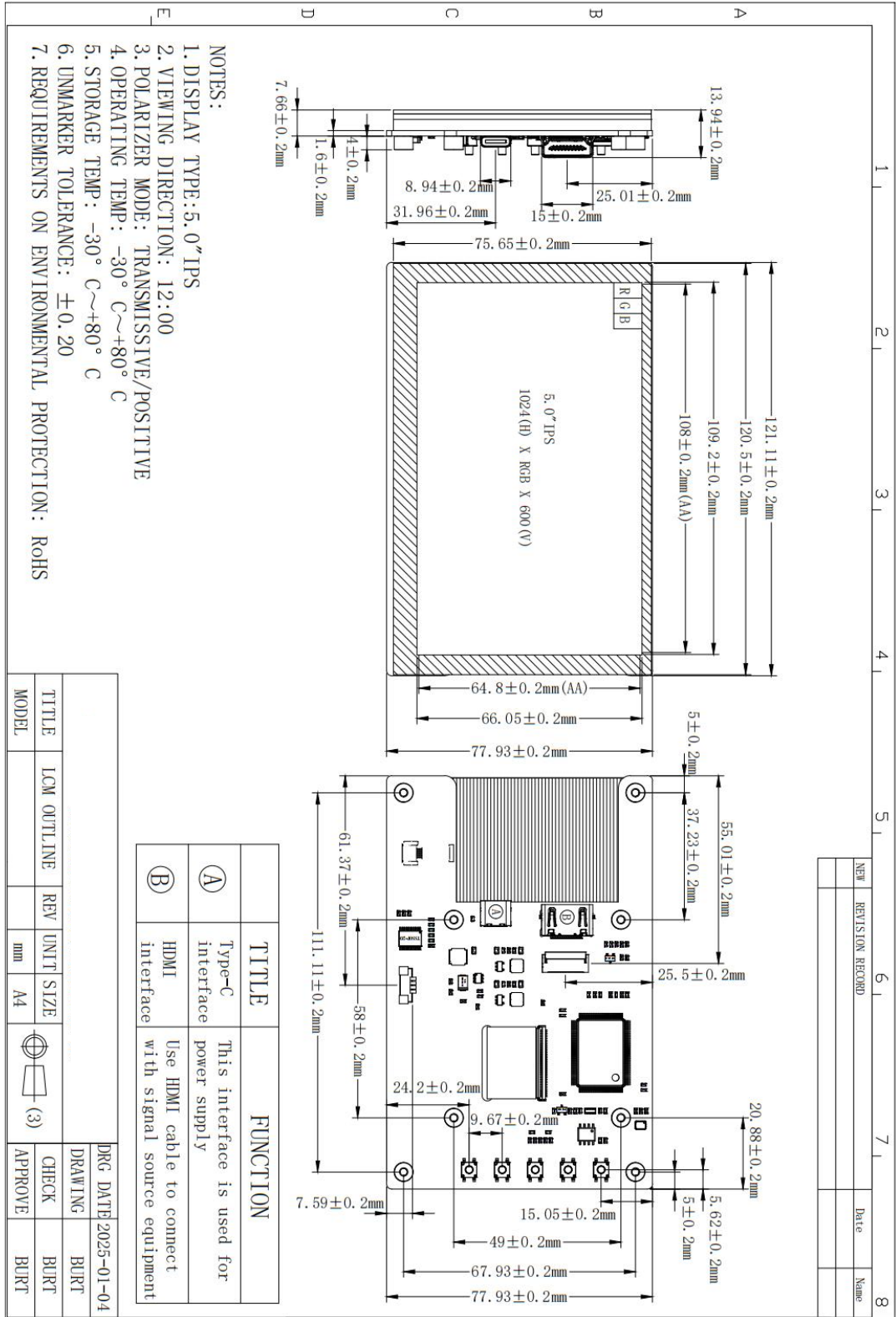
Item	Parameter	Unit
Panel Size	5.0	inch
Panel Type	IPS	-
Resolution	1024*600	pixels
Active Area	108.00 x 64.80	mm
Pixel Pitch	0.1461 x 0.1462	mm
View Angle	170	deg
Luminance(TYP)	430	cd/m2
Backlight Type	LED	-
Operation Temperature	-30~80	°C
Storage Temperature	-30~80	°C
Outline Size	121.11x77.93x13.94	mm
Touch Screen Type	Capacitive Touch Screen	-

2.2. Other Parameter

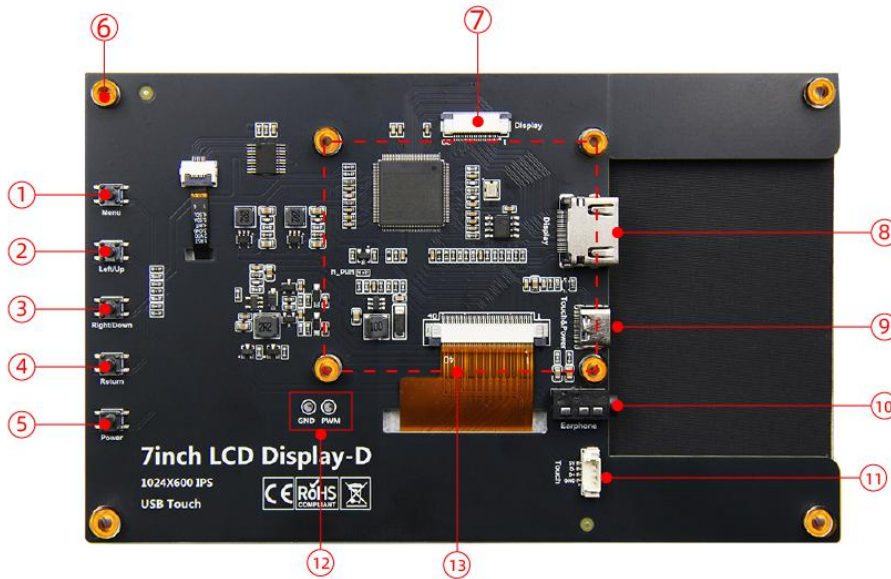
Item	Parameter	Unit
SKU	DLH05050B	-
Total Power	2.55	W
Weight(including package)	259	g

3. Size chart

3.1. Size chart



4. Interface and switch



- | | |
|--------------|-----------------------------------|
| ① Menu | ⑦ 20P-FPC-0.5mm Display |
| ② Left/Up | ⑧ HD-MI Input |
| ③ Right/Down | ⑨ Touch&Power Type-C |
| ④ Return | ⑩ Earphone socket 3.5mm Earphone |
| ⑤ Power | ⑪ 4P-1.25mm Touch Expansion&Power |
| ⑥ M2.5 *4 | ⑫ PWM Expansion |
| | ⑬ RaspberryPI mounting hole *4 |

4.1. Interface description

Key and Interface	Description
HDMI	Input HDMI signal, connect using Mini HDMI cable, commonly used to connect to a computer
POWER/Touch	The power and touch interfaces are shared, connected using Type-C cables, and provide both power and touch functions
Earphone	3.5mm audio output interface for connecting audio devices, such as headphones or audio systems
Touch	The power and touch interfaces are shared, connected using Type-C cables, and provide both power and touch functions
Display	Input HDMI signal, commonly used to connect to a computer
PWM	The backlight brightness can be adjusted by using PWM through external wiring.
MENU/RETURN	Open/Close the System Settings Menu; Return
UP/ BRIGHTNESS	Shortcut key, backlight brightness increase; In the System Settings Menu, Up

INCREASED	
DOWN/ BRIGHTNESS DECREASE	Shortcut key, backlight brightness reduction; In the System Settings Menu, Down
LEFT/ VOLUME REDUCTION	Shortcut key, Volume reduction; In the System Settings Menu, Left
RIGHT/ VOLUME INCREASE	Shortcut key, Volume increase; In the System Settings Menu, Right

5. Connect and use

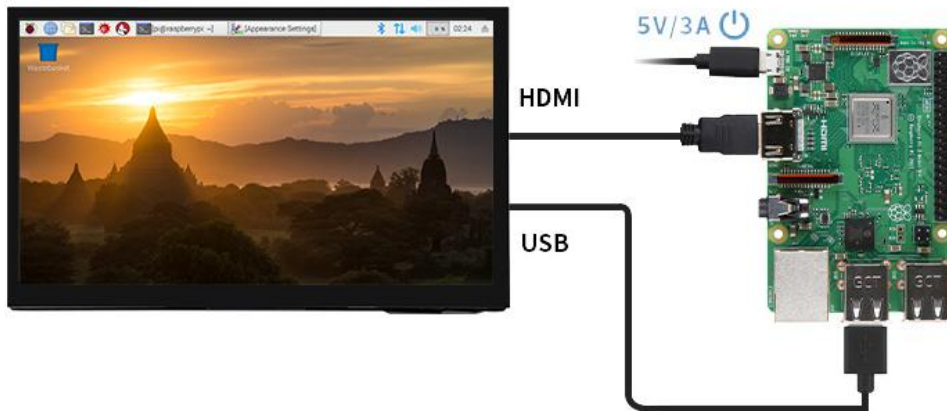
5.1. Connect PC/Laptop

Connect to PC HDMI



5.2. Connect Raspberry Pi

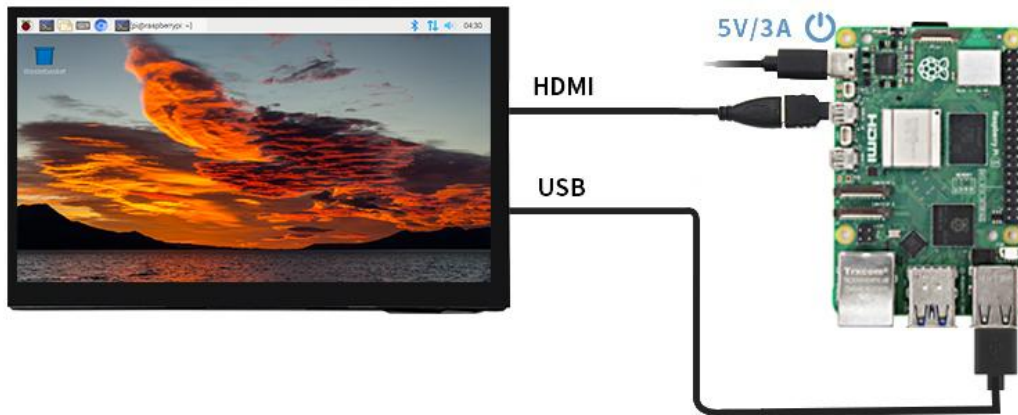
Connect to Raspberry Pi 3B+



Connect to Raspberry Pi 4B



Connect to Raspberry Pi 5



5.3. Connect Jetson Nano

Connect to Jetson Nano

