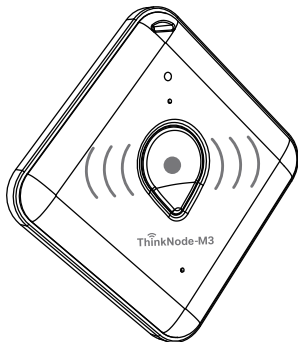
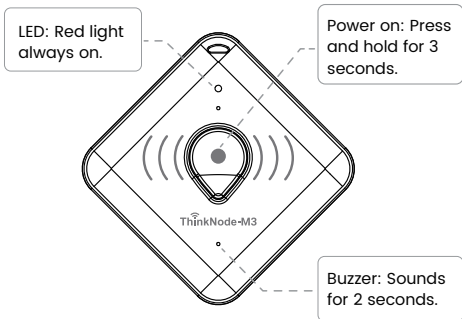


Quick Start Guide

for ThinkNode-M3(Meshtastic)



- **Step 1: Turn on Bluetooth.**



Press and hold the button for 3 seconds until the indicator light turns solid red and the buzzer sounds for 2 seconds, indicating that the device has successfully powered on. After a short wait, the indicator light will change to a slow-flashing blue, signaling that the device is ready for Bluetooth pairing.

Download the **Meshtastic** APP for Mobile

Meshtastic



Available on iOS and Android



- **Step 2: Open the Meshtastic app. As shown in the image, tap the "+" icon in the interface, then tap "Allow" to add a device.**

3:34

61%

Meshtastic



Not connected

Device

☒ None (disable)



IP Address:

Port:

4403



Anonymous usage statistics and
crash reports.

Report Bug



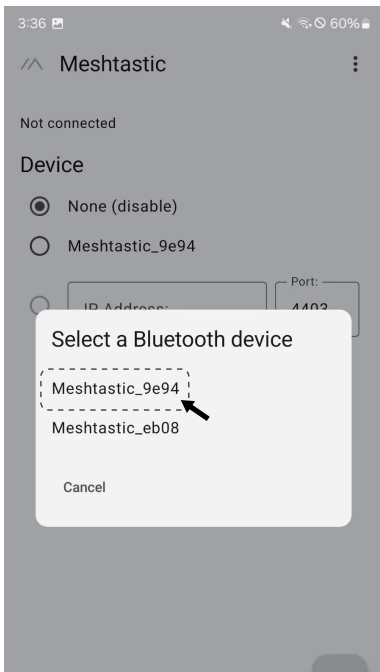
Allow **Meshtastic** to find, connect to, and
determine the relative position of nearby
devices?

Allow

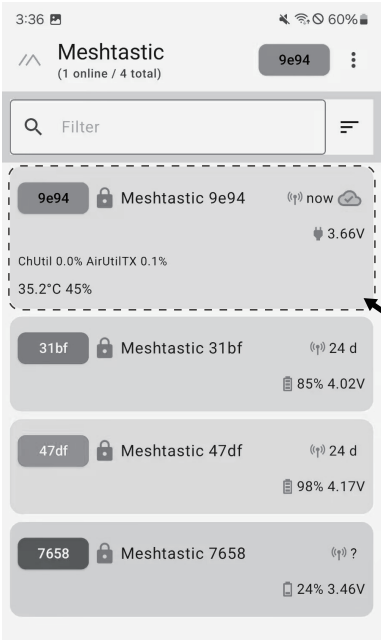
Don't allow



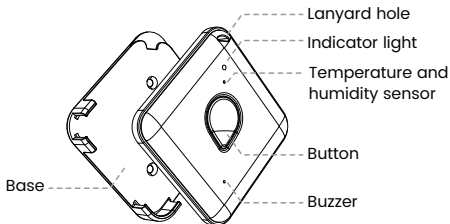
- **Step 3:** Select the device for Bluetooth pairing.



- **Step 4:** The blue indicator light turns off, indicating that the device has successfully connected.



Device Part

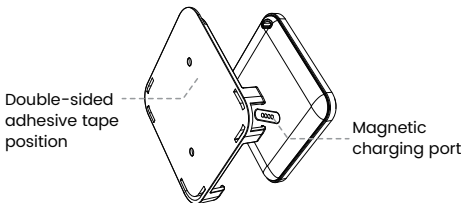


LED Indication

Red	Red light flashes slowly	Charging
	Red light stays on	Fully charged
Blue	Blue light flashes slowly	Waiting for Bluetooth pairing
	Blue light flashes once	Data transmitting and receiving
	Blue light stays on	Device and Bluetooth are initializing

Button Operation

Power on	Long press for 3 seconds, red light stays on, buzzer sounds for 2 seconds
Power off	Long press for 5 seconds, red light flashes quickly for 3 seconds, buzzer sounds for 3 seconds
SOS on / SOS off	Press the button three times in succession to activate the SOS mode and sound the buzzer; press it three times again to deactivate SOS.



Parameter

Product Name	ThinkNode-M3(Meshtastic)
Dimensions	64mm*64mm*10mm (Mounting base not included)
Base Dimensions	68mm*68mm*10.2mm
Material	PC + ABS
Net Weight	38.5g
Main Control IC	nRF52840
LoRa Chip	LR1110
LoRa Frequency Band	EU868, US915
Antenna	Internal Onboard Antenna (GNSS/LoRa/WiFi/BLE)
Bluetooth	Bluetooth 5.0
Battery Type	Lithium Battery
Battery Capacity	760mAh
Operating Temperature	-20°C-60°C
Power Input	5V=1A



Made in China