

ELECROW Raspberry Pi 4B Kit



USER MANUAL

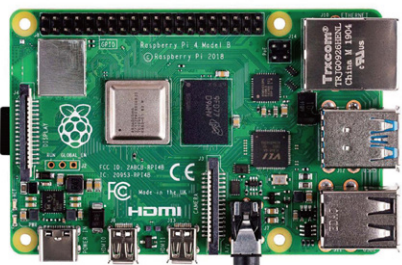
Customer Support:

Should there be any questions, please feel free to let us know and contact us with your purchase order number at info@elecrow.com.

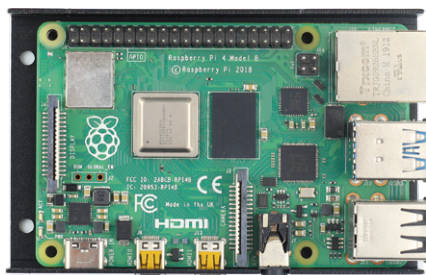
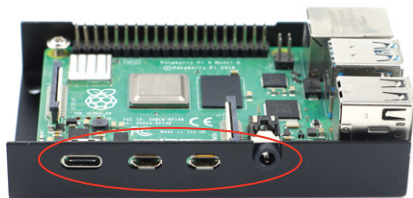
How to assemble the shell

- **Step 1:** As shown in the picture, put the Raspberry Pi 4 in the shell.

Raspberry Pi 4

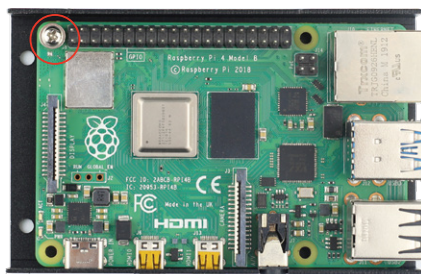
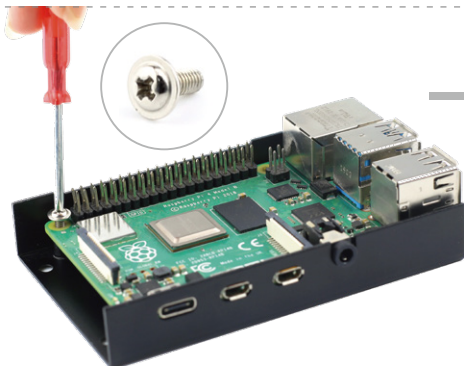


shell

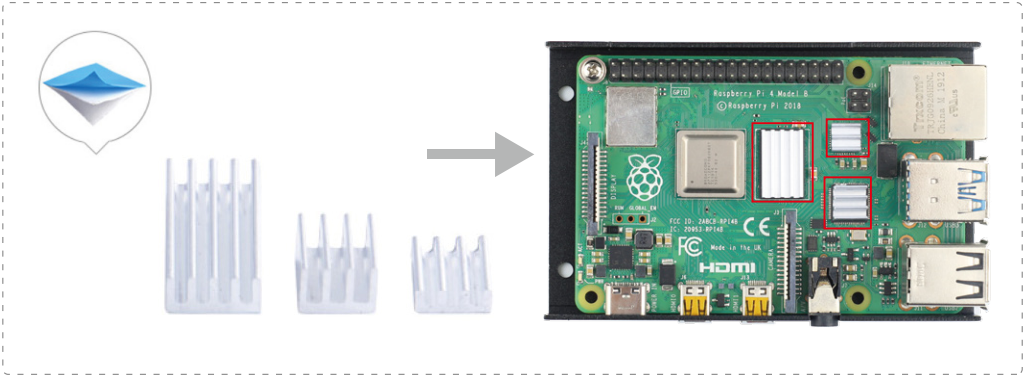


⚠ Note: the interface of Raspberry Pi 4 should correspond to the holes of the shell.

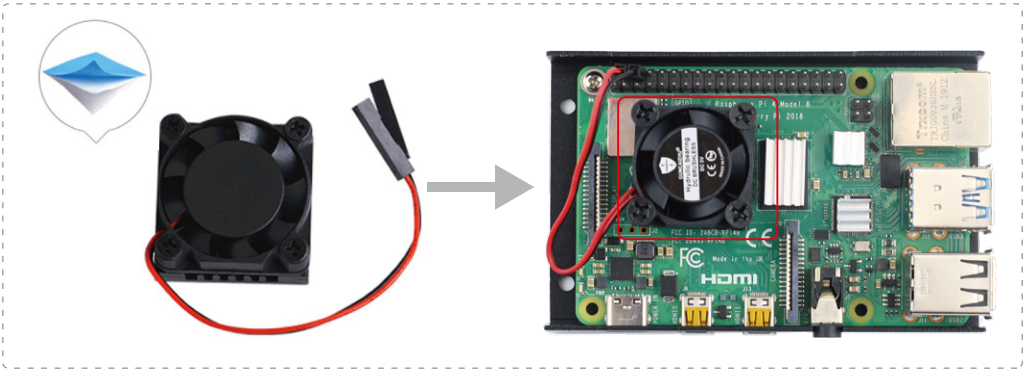
- **Step 2:** Tighten the silver screw to fix Raspberry Pi 4.



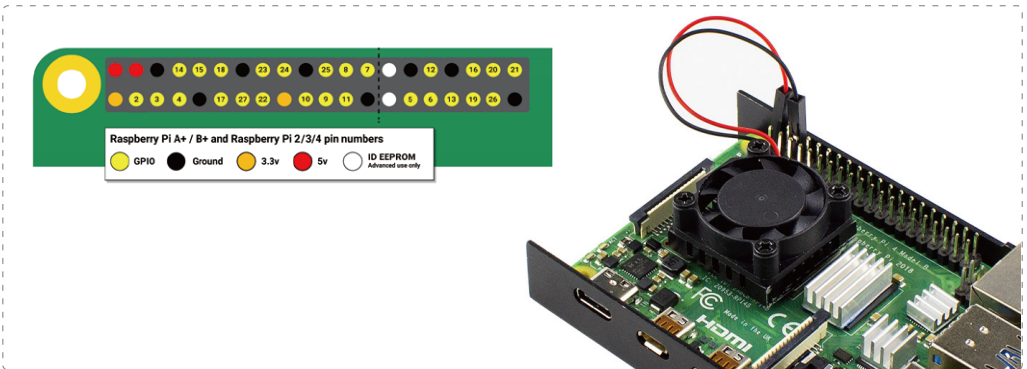
- **Step 3:** Paste the heat sink on the Raspberry Pi 4 .



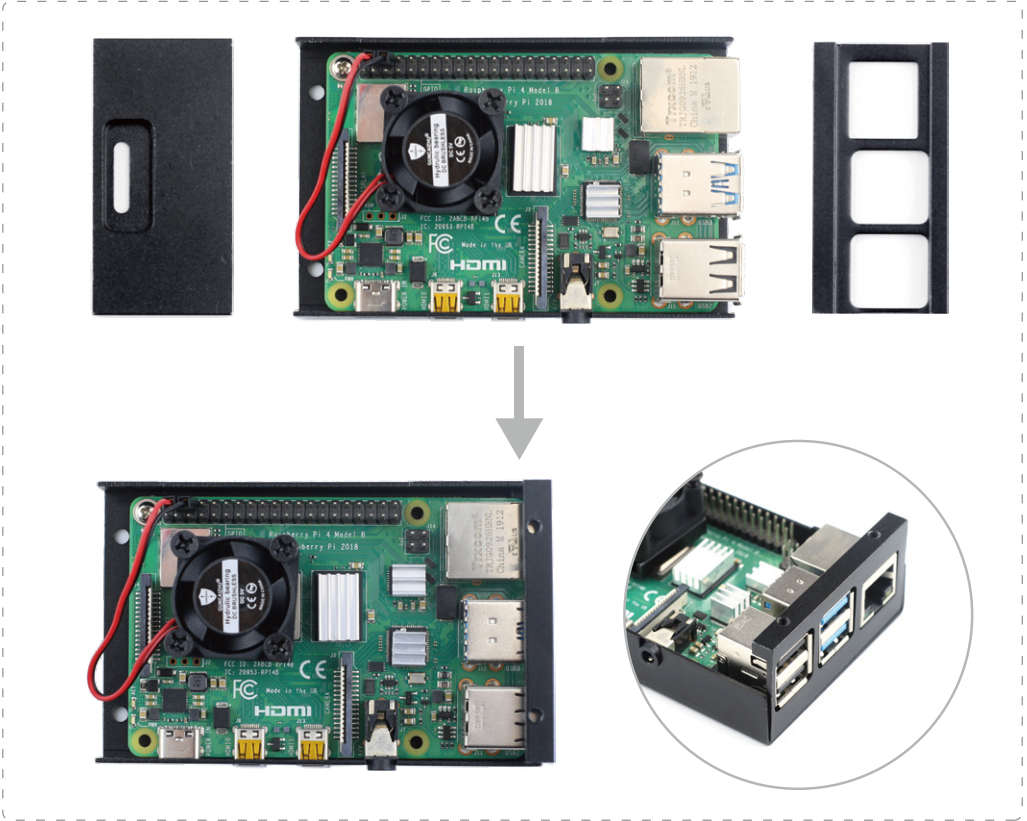
- **Step 4:** Use double-side tap to paste the fan on the Raspberry Pi 4.



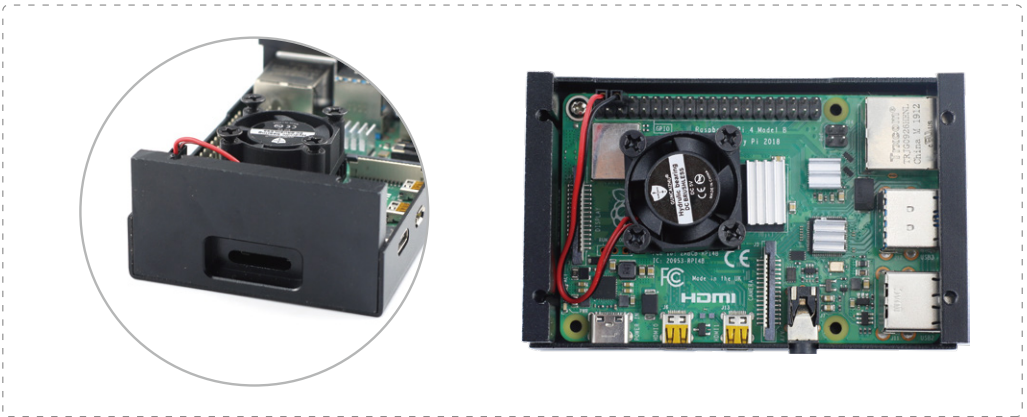
- **Step 5:** Insert the cable head of fan into GPIO pin.



- **Step 6:** Install the side of shell. The interface of Raspberry Pi 4 should correspond to the correct holes.



- **Step 7:** Install another side of the shell. The hole should correspond to the SD card slot of Raspberry Pi 4.



- **Step 8:** Install the shell and then tighten the 8 black screws.



- **Step 9:** You can remove the SD card easily with the tweezers.

