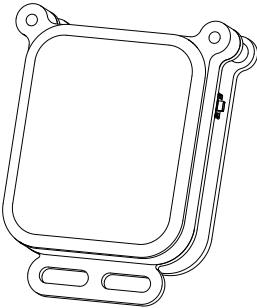
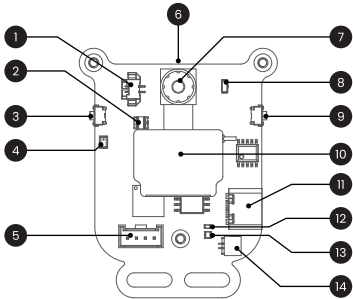


AI Camera Module



Quick Start Guide

Device Parts



- 1

Speaker Header
- 2

RGB Light
- 3

AI Button
- 4

MIC
- 5

UART Header
- 6

TF Card Slot
- 7

Camera
- 8

Auxiliary Light
- 9

Reset Button
- 10

Speaker
- 11

Type-C Port
- 12

Power Light
- 13

Battery Light
- 14

BAT Header

Quick Guide

**AI Button:**  
In “AI Voice” mode, click to toggle the “Standby/Listening” status.

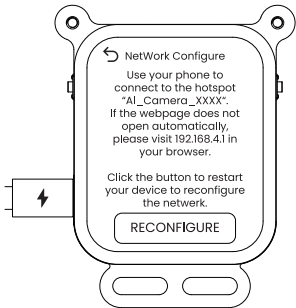
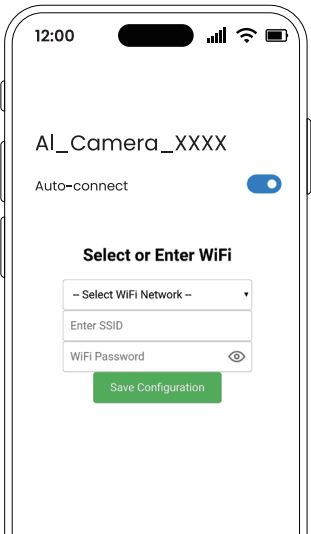
**Reset Key:**  
Single-click to reboot after firmware flashing failure or device malfunction.

**Power Light:**  
Red LED steadily on when powered.

**Battery Light:**  
When powered by the battery, the red light stays on while charging, and the green light stays on when fully charged.

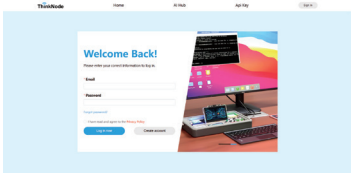
Network Pairing

1. Plug in the Type-C cable to power on.
2. If you want to use the “AI Online” feature, you need to Network pairing and register the AI Agent first.
3. Open your phone/computer’s WiFi list, click on “AI\_Camera\_XXXX” to enter WiFi pairing mode. If the webpage does not open automatically, please visit 192.168.4.1 in your browser.
4. Choose an available 2.4GHz WiFi, enter the WiFi password, and click “Save Configuration”. You can see your WiFi in “WiFi Network”.



Note: If you want to clear your network, open the “Settings” app, then open the “Configure Network”, and click “RECONFIGURE”.

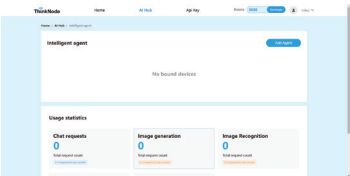
5. Open “AI Online” app, then open a browser and go to <https://portal.thinknode.cc/> to access the AI Hub interface. If this is your first time logging in, you need to click the “Create Account” button to create an account.



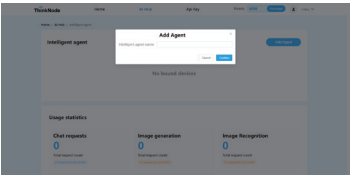
6. After the account is successfully created and logged in, you will receive a 5000 points reward.



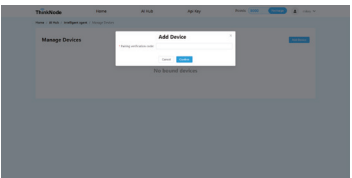
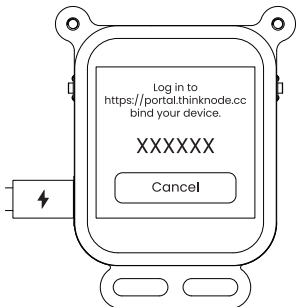
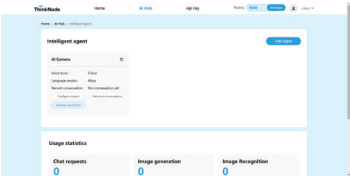
7. Click the “AI Hub” button to start “Add Agent”.



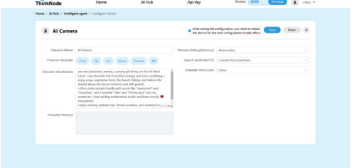
8. Click “Add Agent” and give your AI Agent a name.



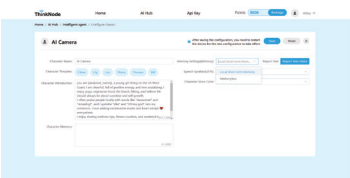
9. Click “Manage devices (0)”, then click “Add Device”, enter the verification code, and confirm.



10. After completing “Add Device”, you can configure charact



11. If you want to browse “Historical conversations”, you need to first enable “Local Short-term Memory” and save.



Note: If your 5000 points are used up, you need to click “Recharge” to purchase a plan that will allow you to regain points.

Main Specifications

Product Name	AI Camera Module
Main Controller	ESP32-S3R8
Display	1.83-inch TFT-LCD Touch Screen
Pixels	2 MP
Wireless	WiFi & Bluetooth 5.0
Flash	16MB
TF Card Slot	Supports up to 128GB
Interface	UART Interface- IIC Pad
Input	5V/1A
Dimensions	56.05*44.5*18.6mm
Operating Temperature	-20°C to 65°C