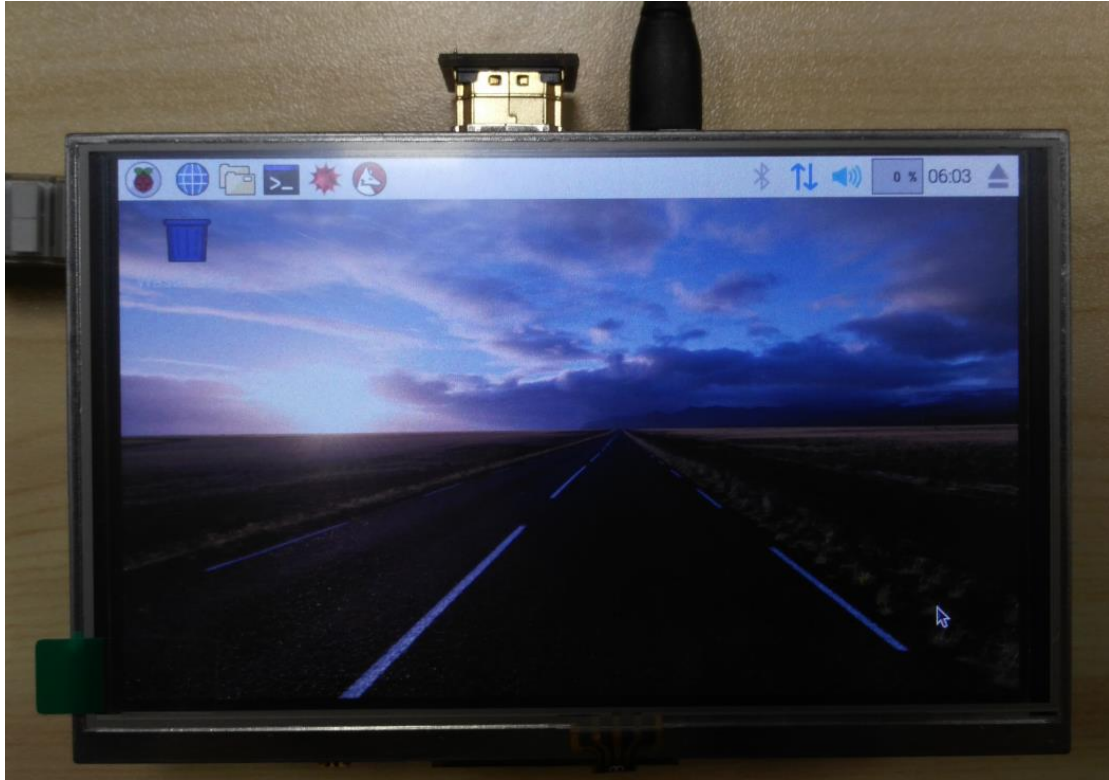


# How to install the LCD diver

## Contents

Overview.....	2
Introduction.....	2
Step 1: Download the latest system and unzip the image.....	3
Step 2: Write the Image to SD Card. ....	3
Step 3: Install the 5 inch LCD .....	5
Step 4: Power ON and open terminal.....	6
Step 5: Download the driver.....	6
Step 6: Install.....	7

## Overview



## Introduction

This tutorial is written for users who are more familiar with the Raspberry Pi and Linux.

### PLEASE NOTE:

The following guide only supports Raspbian \Ubuntu Mate\Retropie and Kali.

\*\*\*\*\*

- \* About Elecrow:
- \* We are a leading manufacturer of electronic components for Arduino and Raspberry Pi.
- \* We have a professional engineering team dedicated to providing tutorials and support to help you get started.
- \* If you have any technical questions, please feel free to contact our support staff via email at [keen@elecrow.com](mailto:keen@elecrow.com)
- \* We truly hope you enjoy the product, for more great products please visit official website: [www.elecrow.com](http://www.elecrow.com)
- Or Amazon store: [www.amazon.com/shops/elecrow](http://www.amazon.com/shops/elecrow)

\*\*\*\*\*

## Step 1: Download the latest system and unzip the image

### For Raspbian: (Not LITE version)

<https://www.raspberrypi.org/downloads/raspbian/>

### For Ubuntu Mate:

<https://ubuntu-mate.org/download/#xenial>

### For Kali:

<https://www.offensive-security.com/kali-linux-arm-images/>

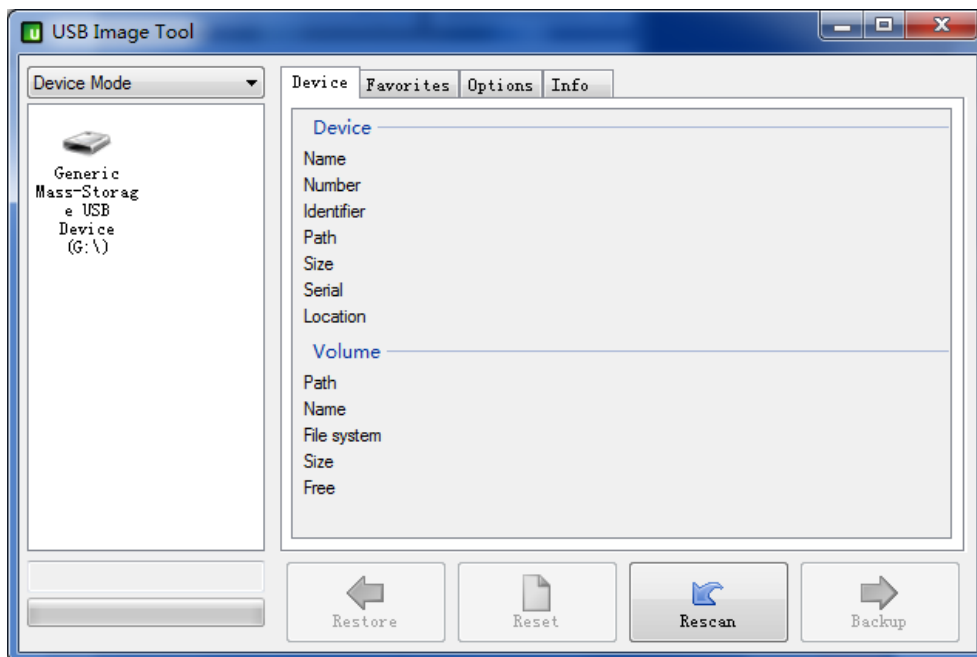
### For Retropie:

<https://retropie.org.uk/download/>

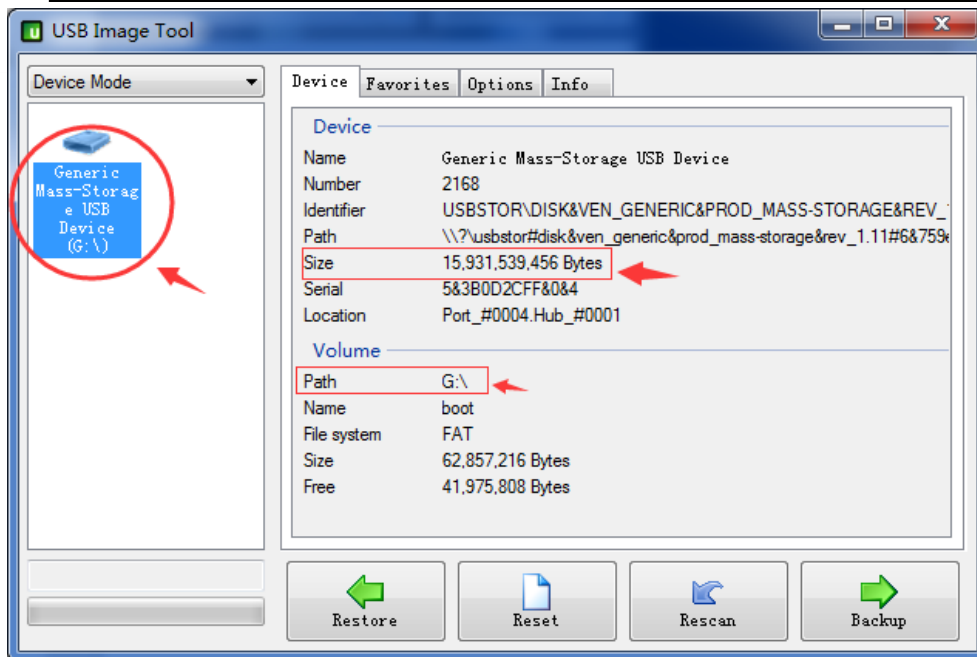
And then unzip the image file. (Next step will use it.)

## Step 2: Write the Image to SD Card.

- 1、 To prepare a new Micro SD memory card (TF card), and a Micro SD card adapter, we recommend that the SD card can be 8GB,16GB or 32GB.
- 2、 Insert the SD card into the computer.
- 3、 Using software in CD: **Path:\Software\usbbit-162\ USB Image Tool.exe**




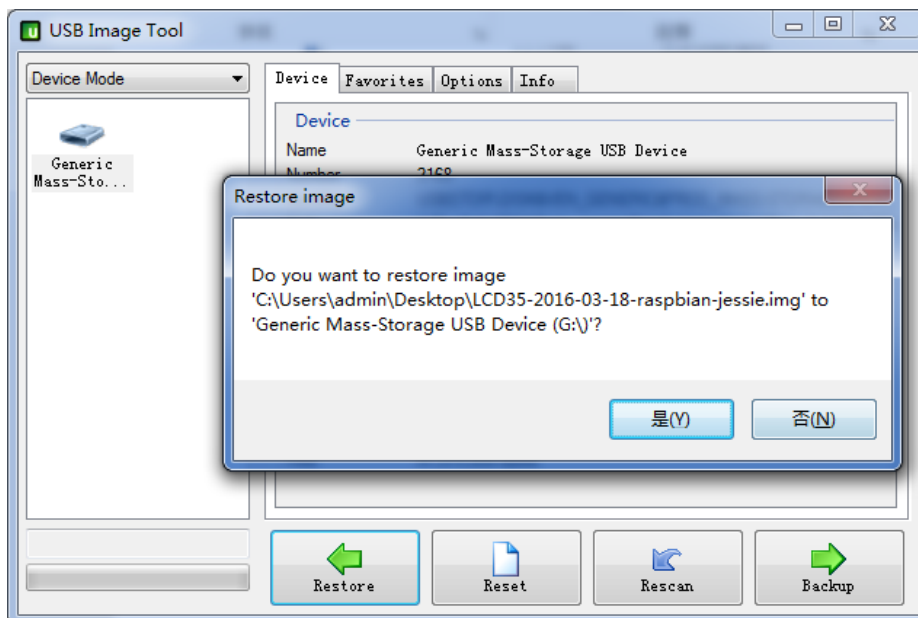
1. Check the Size and Path is correct or not



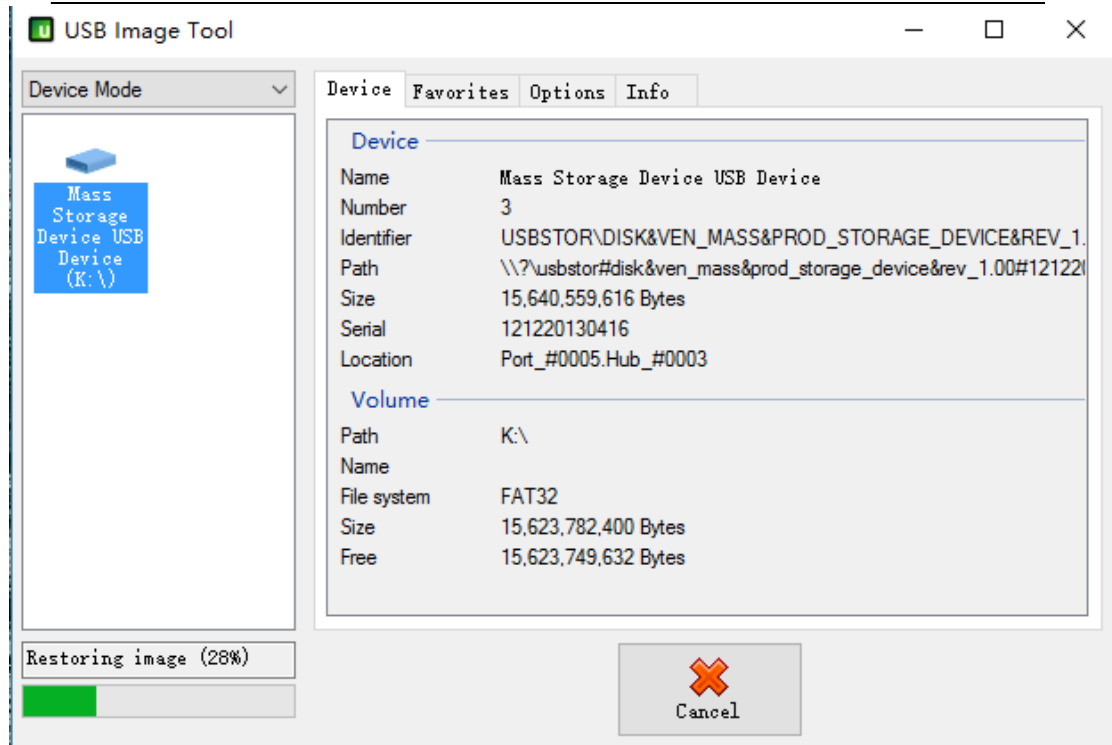
2. Click button "Restore" -> Select Image (\*\*\*.img) -> Click "Y" :



 2016-09-23-raspbian-jessie.img



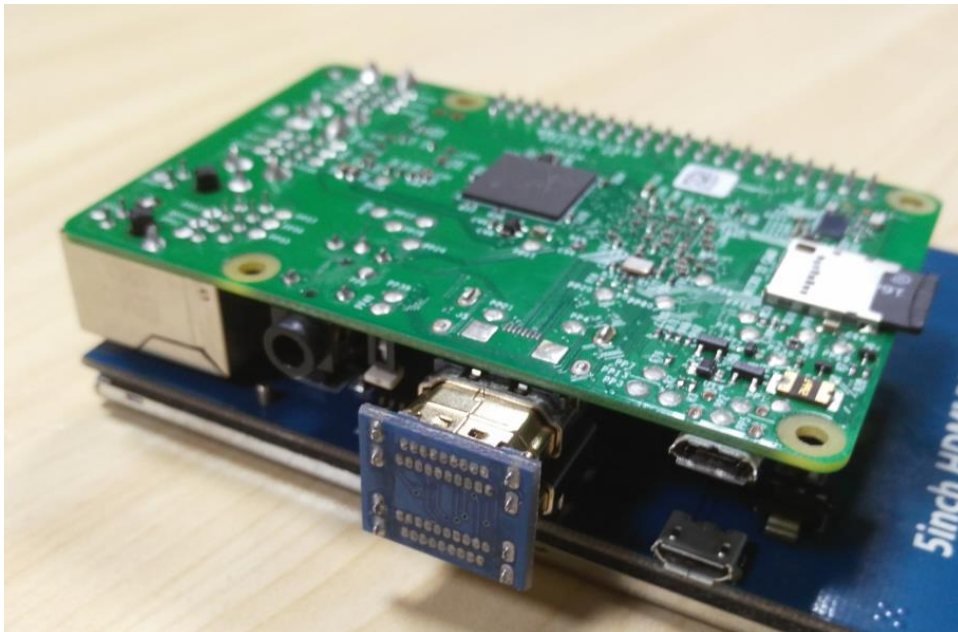
3. Writing image:

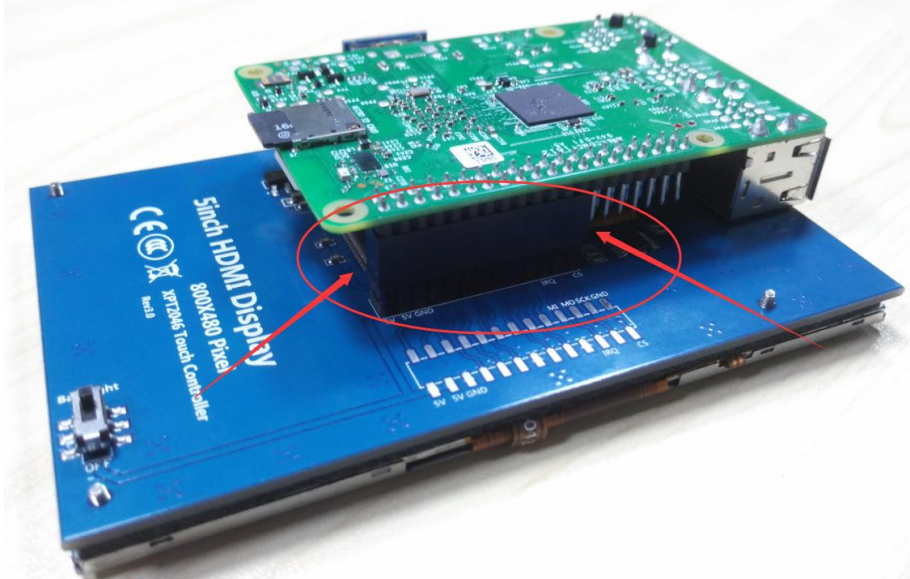


Tips: when it was finished, close USB Image Tool.exe.

## Step 3: Install the 5 inch LCD

A. Install the 5" LCD to Raspberry-Pi 3B/2B/B+ board as below:





B. Insert your SD card.

## Step 4: Power ON and open terminal

(Tip: When you use the SSH connection, you may need to open the SSH. Some versions are open by default. If it was closed, please go to google it.)

```
Connecting to 192.168.1.8:22...
Connection established.
To escape to local shell, press 'Ctrl+Alt+]'.

The programs included with the Debian GNU/Linux system are free software;
the exact distribution terms for each program are described in the
individual files in /usr/share/doc/*/copyright.

Debian GNU/Linux comes with ABSOLUTELY NO WARRANTY, to the extent
permitted by applicable law.
Last login: Fri Sep  2 07:18:59 2016
pi@raspberrypi:~ $ █
```

## Step 5: Download the driver

Run:

```
git clone https://github.com/Elecrow-keen/Elecrow-LCD5.git
```

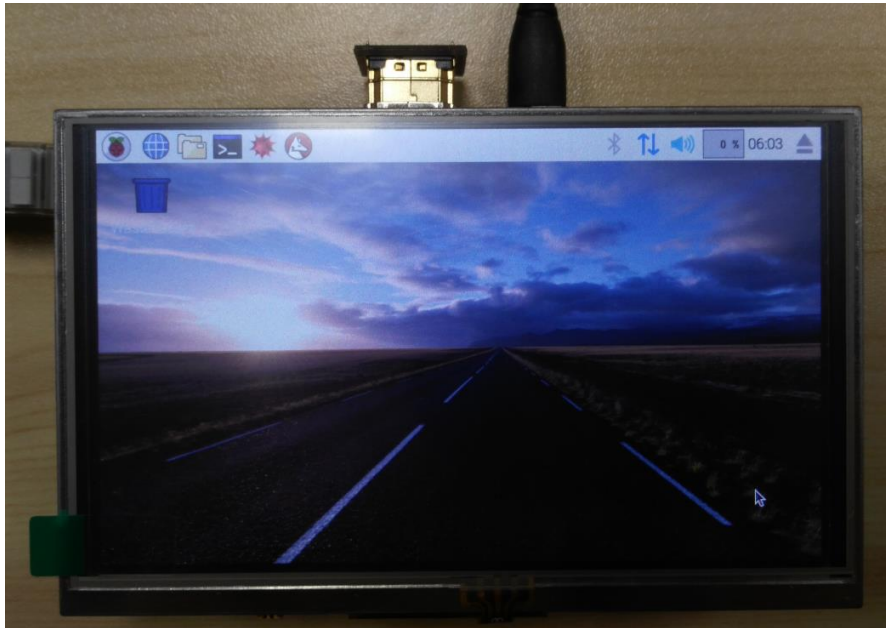
## Step 6: Install

Tips: for Kali, you need to mount boot, run: `mount /dev/mmcblk0p1 /boot/`  
And next:

**Run:**

```
cd Raspbian-LCD5  
sudo ./Elecrow-LCD5
```

The screen should be working now.



**Tips:**

If you want to learn more about the use of 5" LCD, please view document on CD.